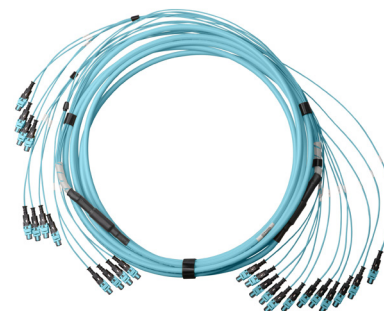


Low Smoke Zero Halogen Base 8 MPO Trunk Cable Assemblies

specifications

Trunk Cable Assemblies shall allow for rapid deployment of high-density permanent links in a single assembly for data center applications requiring quick infrastructure deployment, such as main, horizontal, and zone distribution areas. These trunk cable assemblies shall optimize cable routing requirements to ensure efficient use of pathway space and significantly reduce installation time and cost. QuickNet™ Trunk Cable Assemblies are built with modular MPO connectivity and provide compatibility, flexibility, and system performance in all permanent link applications. All trunk cable assemblies are factory terminated and tested to deliver verified optical performance and reliability to support all 8-Fiber applications including SR4, DR4, SR4.2, and speeds from 10G to 800G and beyond.



applications

Allows system designers to tailor configuration, reach, and breakout construction to application requirements; to minimize waste, optimize cable management, speed deployment, improve flexibility and manageability for lower installation costs. Small diameter trunk cable assemblies use 30% – 40% less space which is ideal for high cable density applications.

construction

Cable type:	Indoor Trunk
Cable jacket rating:	Low Smoke Zero Halogen (LSZH)
Fiber types:	Singlemode: OS2 9/125µm Multimode: OM4 50/125µm OM4+ 50/125µm OM5 50/125µm
Connector types end 'A':	MPO-8 Female or Male, PanMPO™-8 Female or Male
Connector types end 'B':	MPO-8 Female or Male, PanMPO-8 Female or Male, Pigtail
Fiber count:	8, 16, 24, 48, 72, 96, 144
Jacket color:	OS2 Yellow OM4 Aqua OM4+ Aqua OM5 Lime

optical properties

Maximum cable attenuation:	Singlemode: 0.4dB/km at 1310nm 0.3dB/km at 1550nm Multimode: 3.0dB/km at 850nm 1.0dB/km at 1300nm
Maximum connector insertion loss:	Singlemode: PanMPO/MPO Standard IL: 0.75dB PanMPO/MPO Optimized IL 0.50dB Multimode: PanMPO/MPO Optimized IL 0.35dB PanMPO/MPO Ultra: 0.25dB
Connector return loss:	Singlemode: >55dB Multimode: >30dB

physical properties

Cable outside diameter (OD):	8-fiber: 4.5mm 16-fiber: 5.4mm 24-fiber: 5.4mm 48-fiber: 8.7mm	72-fiber: 9.1mm 96-fiber: 9.8mm 144-fiber: 10.6mm
Cable construction:	250µm Distribution Cable	
Minimum bend radius:	Under load: 20 × Cable OD Static: 10 × Cable OD	
Cable tensile strength:	440N (100 lbs.)	
Cable compressive load:	100 N/mm	
Connector durability:	500 mating cycles*	
Breakout outside diameter:	2.0mm	
Breakout length:	1m	

*With proper cleaning and inspecting.

environmental properties

Operating temperature:	-20°C to 70°C (-4°F to 158°F)
Storage and shipping temperature:	-40°C to 70°C (-40°F to 158°F)
Installation temperature:	-10°C to 60°C (14°F to 140°F)

standards

Meets or exceeds:	ISO/IEC 11801, TIA/EIA-568-C.3, TIA-604-5 (FOCIS-5), TIA/EIA-568-C.1, GR-409-CORE, ICEA S-83-596, RoHS Compliant
--------------------------	--

Low Smoke Zero Halogen Base 8 MPO Trunk Cable Assemblies

part number configurator

FYZ8LJJY011M030 = OM4 8-Fiber HD Flex (Base 8) Indoor Small Diameter Trunk, LSZH, PanMPO-8 Female with 1 m breakout to PanMPO-8 Female with 1 m breakout, Polarity B, Optimized IL, Pulling Eye End A, 30 M

Character	1	2	3	4	5	6	7	8	9	10	11	12	13	14	15
Example	F	Y	Z	8	L	J	J	Y	0	1	1	M	0	3	0

1 – Fiber

F = Fiber

2 – Cable Type

T = Indoor trunk cable (48 – 144 fibers)

Y = Indoor small diameter trunk cable (8 – 24 fibers)

3 – Fiber Type

9 = OS2 Singlemode 9/125µm

Z = OM4 50/125µm

S = OM4+ 50/125µm

W = OM5 50/125µm

4 – Fiber Count

8 = 8-Fibers

C = 16-Fibers

U = 24-Fibers

W = 48-Fibers

X = 72-Fibers

Y = 96-Fibers

A = 144-Fibers

5 – Jacket Type

L = LSZH

6 & 7 – Connector Types

G = MPO-8 Female (MM)

H = MPO-8 Male (MM)

J = PanMPO-8 Female (MM)

K = PanMPO-8 Male (MM)

X = MPO-8 Female APC (SM)

Y = MPO-8 Male APC (SM)

V = PanMPO-8 Female APC (SM)

W = PanMPO-8 Male APC (SM)

U = Pigtail (End B only)

8 – Construction/Performance

A = Method A, Standard IL (SM)

B = Method B, Standard IL (SM)

X = Method A, Optimized IL

Y = Method B, Optimized IL

K = Method A, Ultra IL (MM)
(8 – 48-Fibers)

L = Method B, Ultra IL (MM)
(8 – 48-Fibers)

9-11 – Serial

12 – Unit of Measure

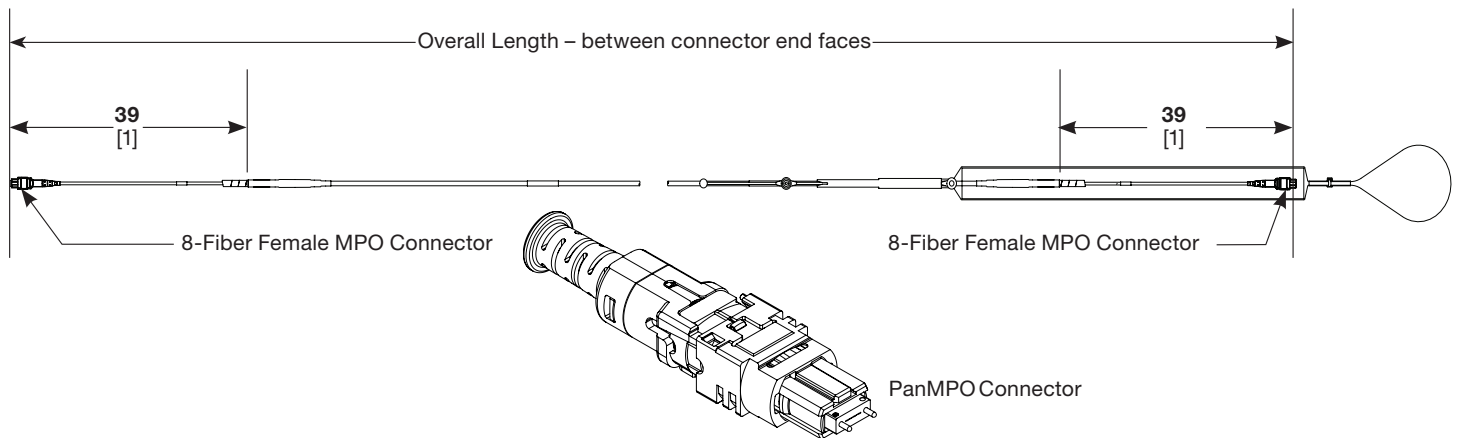
M = Meters

13, 14, 15 – Cable Assembly Length

005 – 999 Meters

Serial	Transition	Pulling Eye
011	HD Flex	Yes
012	HD Flex	No
013	HD Flex to pigtail	Yes
014	HD Flex to pigtail	No
015	Standard	Yes
016	Standard	No
017	Standard to pigtail	Yes
018	Standard to pigtail	No

small diameter trunk cable assembly detail



Dimensions are in inches. [Dimensions in brackets are metric].

WORLDWIDE SUBSIDIARIES AND SALES OFFICES

PANDUIT US/CANADA
Phone: 800.777.3300

PANDUIT EUROPE LTD.
London, UK
Phone: 44.20.8601.7200

PANDUIT SINGAPORE PTE. LTD.
Republic of Singapore
Phone: 65.6305.7575

PANDUIT JAPAN
Tokyo, Japan
Phone: 81.3.6863.6000

PANDUIT LATIN AMERICA
Guadalajara, Mexico
Phone: 52.33.3777.6000

PANDUIT AUSTRALIA PTY. LTD.
Victoria, Australia
Phone: 61.3.9794.9020

For a copy of Panduit product warranties, log on to www.panduit.com/warranty

For more information

Visit us at www.panduit.com

Contact Customer Service by email: cs@panduit.com

or by phone: 800.777.3300

PANDUIT

© 2023 Panduit Corp.
ALL RIGHTS RESERVED.
FBSP243-WW-ENG
10/2023