

UPS Systems

Reliable, scalable power solutions, protecting critical applications worldwide.



PANDUIT[®]

Introduction

In today's fast-paced world, ensuring uninterrupted operations is paramount. That's where intelligent UPS systems come into play. Designed to provide immediate backup power during utility outages, these solutions are essential for maintaining business continuity and protecting critical IT equipment. UPS systems not only deliver this reliability but also shield sensitive electronics from damaging power surges and voltage fluctuations, allowing critical assets to operate at peak performance.

Empowering businesses to maintain seamless operations, our UPS systems represent a commitment to reliability and innovation. With a focus on future-proofing operations and meeting industry standards, Panduit power solutions are trusted by leading organizations to keep critical processes running smoothly. Experience peace of mind with a UPS System that is both dependable and forward-thinking.

Your Outlet for Leadership and Innovation

Top 3 Global Connectivity Provider	112 Countries Customers in 112 countries	Serving 91% Global Connectivity Provider	5,000+ Infrastructure Experts
2,000+ Patents Globally	18 R&D Labs and 200 R&D Personnel	Industry Leaders Leadership on Industry-Standards Boards	\$1B Annual Revenue Exceeding \$1 Billion USD

Put Our Alliances to Work for You

Our strategic partners are ready to broaden your options and apply best practices to your infrastructure. Let our long-term alliances with industry leaders be the longevity and interoperability of your data center.



**Rockwell
Automation**

**Prysmian
Group**

UPS System Markets and Sectors



Healthcare



Education



Financial

In the healthcare, education, and financial sectors, reliable power solutions are essential for maintaining uninterrupted operations and safeguarding critical data. Our UPS secures continuous power for imaging devices and electronic health records in healthcare, supports stable learning environments and smart classrooms in educational institutions, and provides robust power protection for seamless transaction processing and data management in the financial sector.

Top Use Case Scenarios:

- **Healthcare:** Ensuring operation of imaging devices and electronic health records.
- **Education:** Maintaining power for smart classrooms and IT infrastructure.
- **Financial:** Protecting data centers and ensuring seamless online banking operations.

Ideal Applications Systems



Data Centers



Enterprise Network



Industrial Network

Our UPS systems cater to data centers, enterprise networks, and industrial environments by ensuring continuous power for critical IT operations, supporting business continuity for communication and data systems, and enhancing operational resilience in industrial automation and control systems.

Top Use Case Scenarios:

- **Data Centers:** Ensuring high availability for cloud services and applications.
- **Enterprise Network:** Maintaining power for communication and collaboration tools.
- **Industrial Network:** Supporting power for automation and control systems in manufacturing.

UPS Categories and Series Overview

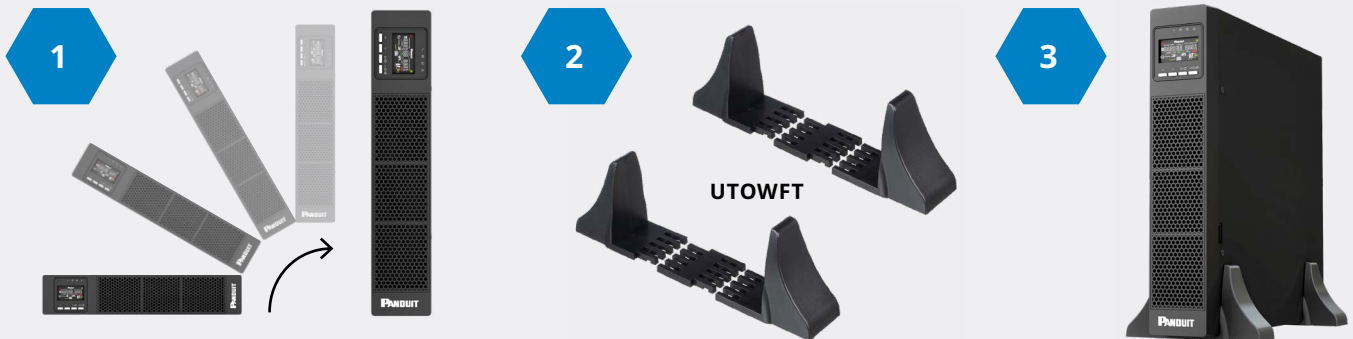
Line-Interactive UPS:

The SteadyPulse UPS series offers robust line-interactive UPS solutions designed to provide reliable power from the edge to the data center. Perfect for small-to-medium-sized businesses, these UPS systems allow for continuous operation during minor power disturbances and outages. Featuring automatic voltage regulation (AVR), line-interactive UPS systems correct minor power fluctuations without switching to battery power, extending battery life and maintaining a stable output voltage for the connected equipment.

- **VA Capacity:** Ranging from 1000 VA to 3000 VA, accommodating various power requirements.
- **Form Factor:** Available in 2 RU and tower configurations, offering flexibility for different installation needs.
- **Battery Transfer Time:** 4-8 milliseconds
- **UPS Output:** Pulse-Width modulation technology, ideal for less sensitive electronics.
- **Battery Technology:** Lithium
- **Network Communications:** DCIM Ready

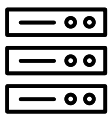
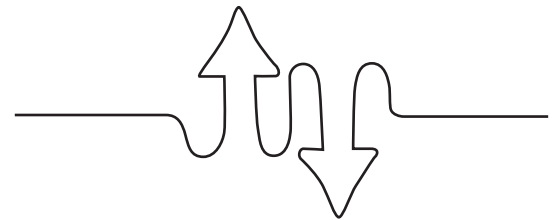
Tight on Space? Flip it and Secure it.

It's as simple as 1, 2, 3.



Boost and Trim for Perfect Power Stability

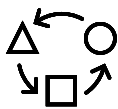
Automatic Voltage Regulation (AVR) provides steady voltage supply to critical equipment, protecting against fluctuations and extending battery life by reducing the need for battery use during minor power disturbances.



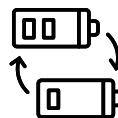
Compact Form Factor



Energy Star Rated



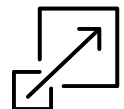
Flexible Power System



Hot Swappable Battery



Lithium Battery



Scalable Runtime

Feature Overview: U02N11L

Line Interactive
SteadyPulse™ UPS

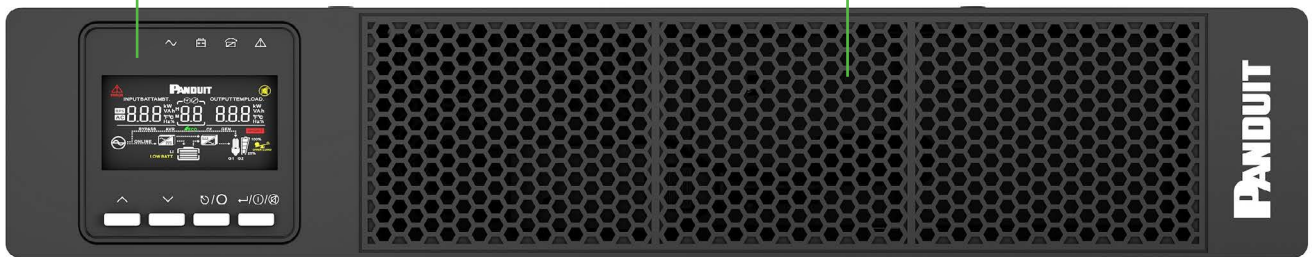
Front



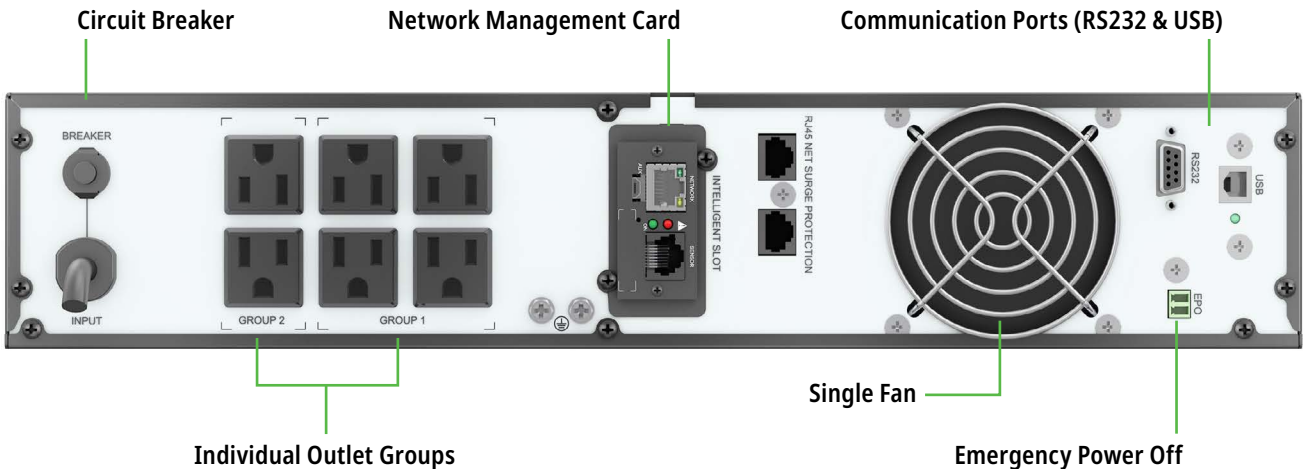
LED Display Screen

ON/OFF Toggle Switch

Replacement Battery Compartment Door



Back



Circuit Breaker

Network Management Card

Communication Ports (RS232 & USB)

Individual Outlet Groups

Single Fan

Emergency Power Off



Take a deeper
dive into
U02N11L

True Online Double Conversion UPS

The SteadySine UPS series represents the pinnacle of power protection with its true online double-conversion technology and pure sine wave output. Ideal for mission-critical applications such as data centers and industrial environments, SteadySine UPS systems provide continuous and clean power by converting incoming AC power to DC and then back to AC. This process confirms the highest level of power quality, eliminating interruptions caused by power outages, voltage sags, and surges.

Product Highlights

- **VA Capacity:** 1 kVA to 80 kVA
- **Form Factor:** 2U - 7U Tower models. Providing versatile solutions for various operational setups.
- **Battery Transfer time:** Zero Transfer time
- **Battery Output:** Pure Sine Wave Technology
- Lithium & VRLA Options Available
- **Network Communications:** DCIM Ready

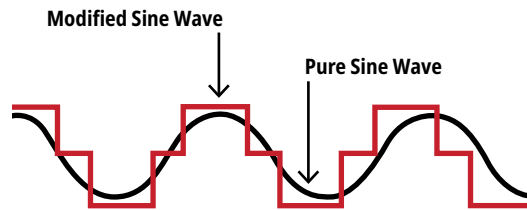


Future-proof with a stepdown transformer

Integrate a step-down transformer to achieve seamless voltage compatibility to power diverse devices across different voltage environments, maximizing your UPS investment while creating a reliable and steady performance for critical applications.

Pure Sine Wave Technology

Delivering a consistent pure sine wave output, for optimal performance and protection for sensitive electronic equipment. Providing seamless power transitions, improved device longevity, and compatibility with a wide range of critical applications.

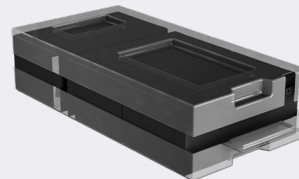


Benefits

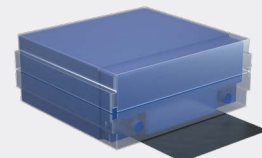
- Helps sensitive electronics run efficiently and without risk
- Reduces wear and tear on connected devices
- Eliminates harmonics, stabilizes frequency, and offers power factor correction for reliable and steady performance

Flexible Battery Solutions for Enhanced UPS Performance

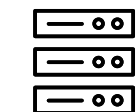
Panduit double conversion UPS systems offer the flexibility of both lithium-ion and VRLA battery options, providing multiple solutions to meet the demands of today and fit best for operational and budgetary requirements.



VRLA



Lithium



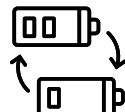
Compact Form Factor



Energy Star Rated



Flexible Power System



Hot Swappable Battery



Lithium Battery



Pure Sine Wave



Scalable Runtime



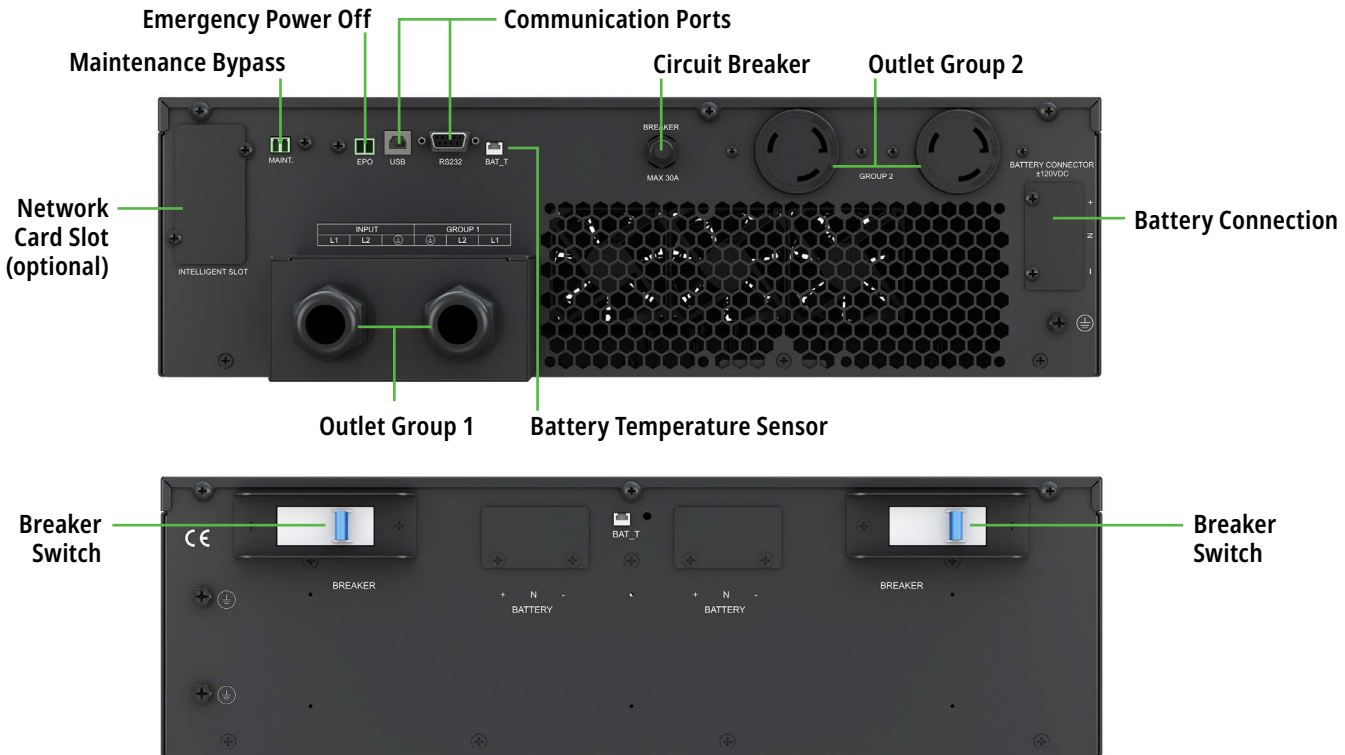
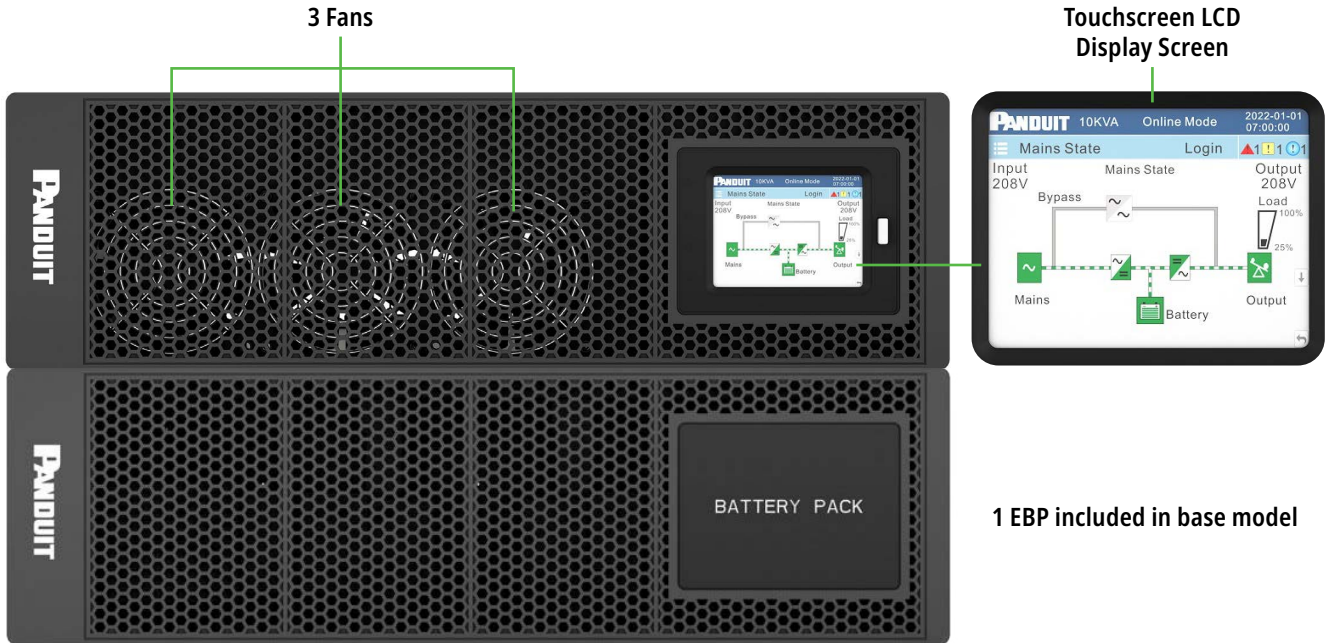
Zero Transfer Time

Feature Overview: U06S11V and UVP240

True Online
SteadySine UPS

U06S11V

UVP240



Take a deeper
dive into
U06S11V

Feature Overview: U05N11V and UTFMRDU

True Online UPS and
Step-Down Transformer



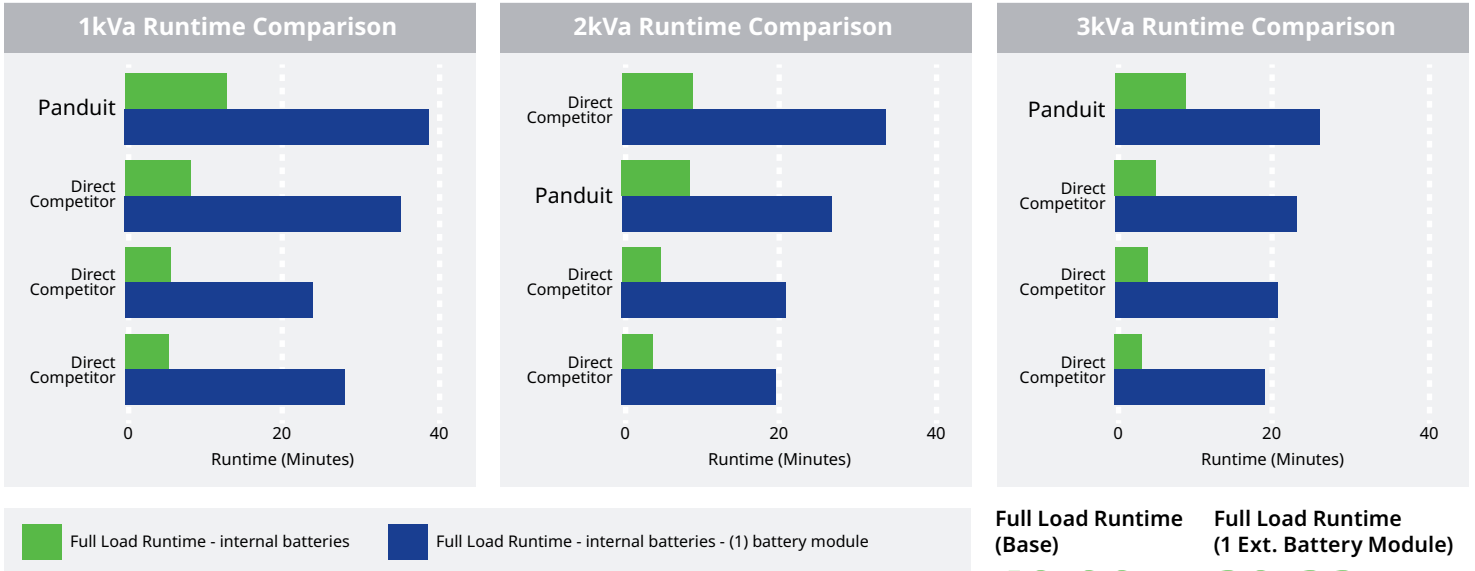
U05N11V

UTFMRDU



Pack a Punch Get more runtime in a smaller footprint

Panduit rackmount UPS Systems paired with a VRLA external battery.
Outweighs the competition



Full Load Runtime (Base)	Full Load Runtime (1 Ext. Battery Module)
10.00	30.33
PANDUIT AVERAGE	PANDUIT AVERAGE
5.29	24.68
OTHERS	OTHERS

Redundancy and Paralleling

Snap into a seamless, scalable UPS System that evolves with your needs


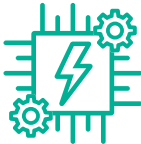








Our innovative lithium powered Double Conversion UPS solutions are designed with ease and efficiency in mind, allowing you to effortlessly connect multiple units and battery packs to customize the system to meet evolving power demands.



- **High-Density, Scalable Power:** Expand from 1 to 4 UPS units (5–40 kVA)
- **Extended Runtime:** Scalable batteries for long-lasting power
- **Optimal Power Factor:** Unity power factor offers greater efficiency
- **Versatile Voltage:** Supports single-phase 208/240V
- **Superior Double Conversion:** Delivers top power quality
- **SmartECO Efficiency:** Achieve up to 98% efficiency
- **Comprehensive Monitoring:** Temperature, humidity, and electronic sensors included
- **Seamless Connectivity:** Wireless Wi-Fi for easy management

The Future is now

Top 10 reasons to switch to a lithium-ion Powered UPS

 <p>Longer Battery Life Lithium-ion batteries typically last two-to-three times longer than VRLA batteries, reducing the frequency of replacements and maintenance.</p>	 <p>Advanced Monitoring and Management Lithium-ion UPS systems often come with advanced battery management systems (BMS) that provide real-time monitoring and predictive maintenance, enhancing reliability and reducing unexpected failures.</p>
 <p>Lower Total Cost of Ownership (TCO) The extended lifespan, reduced maintenance, and energy savings associated with lithium-ion UPS systems result in a lower TCO over the system's lifecycle.</p>	 <p>Better Temperature Tolerance Lithium-ion batteries can operate efficiently across a broader temperature range, reducing the need for extensive cooling systems and associated costs.</p>
 <p>Higher Efficiency Lithium-ion UPS systems result in a lower TCO over the system's lifecycle.</p>	 <p>Improved Safety Advances in lithium-ion battery technology have improved safety features, reducing the risk of thermal runaway and other hazards associated with older battery technologies.</p>
 <p>Lithium-ion Batteries Recharge much faster than VRLA batteries, minimizing downtime and ensuring quicker recovery during power outages.</p>	 <p>Reduced Environmental Impact Lithium-ion batteries are more environmentally friendly due to their longer lifespan and lower toxicity compared to lead-acid batteries, contributing to sustainability goals.</p>
 <p>Higher Energy Density Lithium-ion batteries offer higher energy density, meaning they can store more energy in a smaller footprint, saving valuable space in data centers and other environments.</p>	 <p>Scalability Lithium-ion UPS systems are more easily scalable, allowing for incremental upgrades as power demands grow without significant overhauls.</p>

Lithium-Ion Outperforms VRLA when compared...

Battery Feature	VRLA Battery	Lithium-Ion Battery	Lithium-Ion Benefit
Standard battery life	3 – 5 years	8 – 10 years	Up to 3 times longer life
Typical cycle life	200 – 260	2000	Up to 10x more discharge/recharge cycles
Battery recharge time (@90%)	3– 6 hours	<2 hours	Fast recovery time safeguards your critical IT equipment in the event of multiple outages
Battery weight	10.9 kg	5.9 kg	45% lighter making it ideal for small spaces and wall-mount racks
Warranty	2 or 3 years	5 years	Worry-free operation so you can set-it and forget-it



See our
Lithium
Solutions

Hot Swappable Capabilities

Stay Powered, Stay Connected –
Hot Swappable Designs for Seamless Operation

Intelligent hot swappable capabilities allow critical operations to stay powered in times of need. With this non-disruptive technology, you can replace the main battery system, intelligent network card, and environmental sensors without powering down the UPS system. This feature is vital for maintaining continuous uptime and productivity, keeping operations running smoothly and efficiently.

Why It Matters:

- **Zero Downtime:** Perform maintenance and replacements without interrupting operations.
- **Enhanced Reliability:** Maintain optimal system performance and connectivity.
- **Operational Efficiency:** Quick and easy component swaps reduce maintenance time and effort.

Use Case Scenarios:

- **Data Centers:** Replace internal batteries during peak operation hours without shutting down servers, ensuring continuous data processing and uptime.
- **Enterprise Networks:** Swap out intelligent network cards during critical business operations, maintaining network stability and preventing any disruptions in communication.
- **Industrial Environments:** Replace environmental sensors on the fly to keep monitoring systems active, ensuring safety and compliance without halting production lines.

Experience the convenience and reliability of non-disruptive hot swappable capabilities, designed to keep operations running smoothly and efficiently when needed most.



UPS Utility Software

Elevate UPS Management

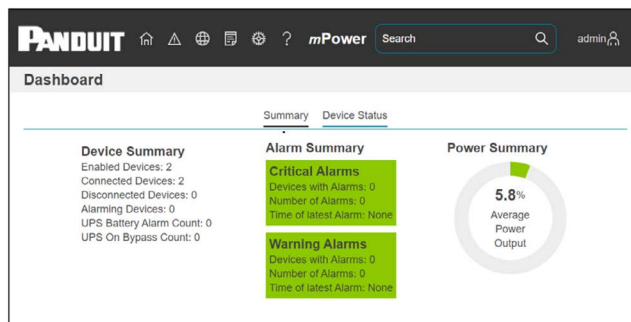
Experience seamless management of our UPS systems with Panduit UPS Utility software. Designed for efficiency, this free utility tool enables bulk configuration, firmware updates, and device health check, helping power infrastructures operate at peak performance. This comprehensive software simplifies UPS management, reduces downtime risk, and enhances reliability, making it an essential asset for any organization.

Use Case Scenarios

- **Edge Sites:** Centrally manage devices across multiple locations
- **Industrial Settings:** Simplify integration and operation with bulk configuration
- **Enterprise Networks:** Quick deploy security patches through firmware updates

Benefits

- **Increased Reliability:** Keep UPS systems running smoothly.
- **Efficiency Gains:** Streamline configuration processes.
- **Enhanced Performance:** Allows for optimal system performance.



Review our
online
resource
center

Elevate Your Power Infrastructure with Panduit Onsite Services

In the modern IT landscape, where complexity is the norm and efficiency is paramount, Panduit UPS Services stand as your steadfast ally. We don't just set up your critical power systems; we ensure they thrive.

6 WAYS

Panduit Protects You & Your Operations

1 Extended Warranties



2 Onsite Services



3 Preventative Maintenance (PM) Services



4 Battery Replacements



5 Site Assessment Services



6 Installation Services

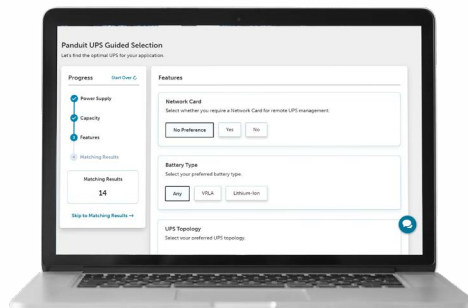


UPS System Selector Guide



How to Select a UPS

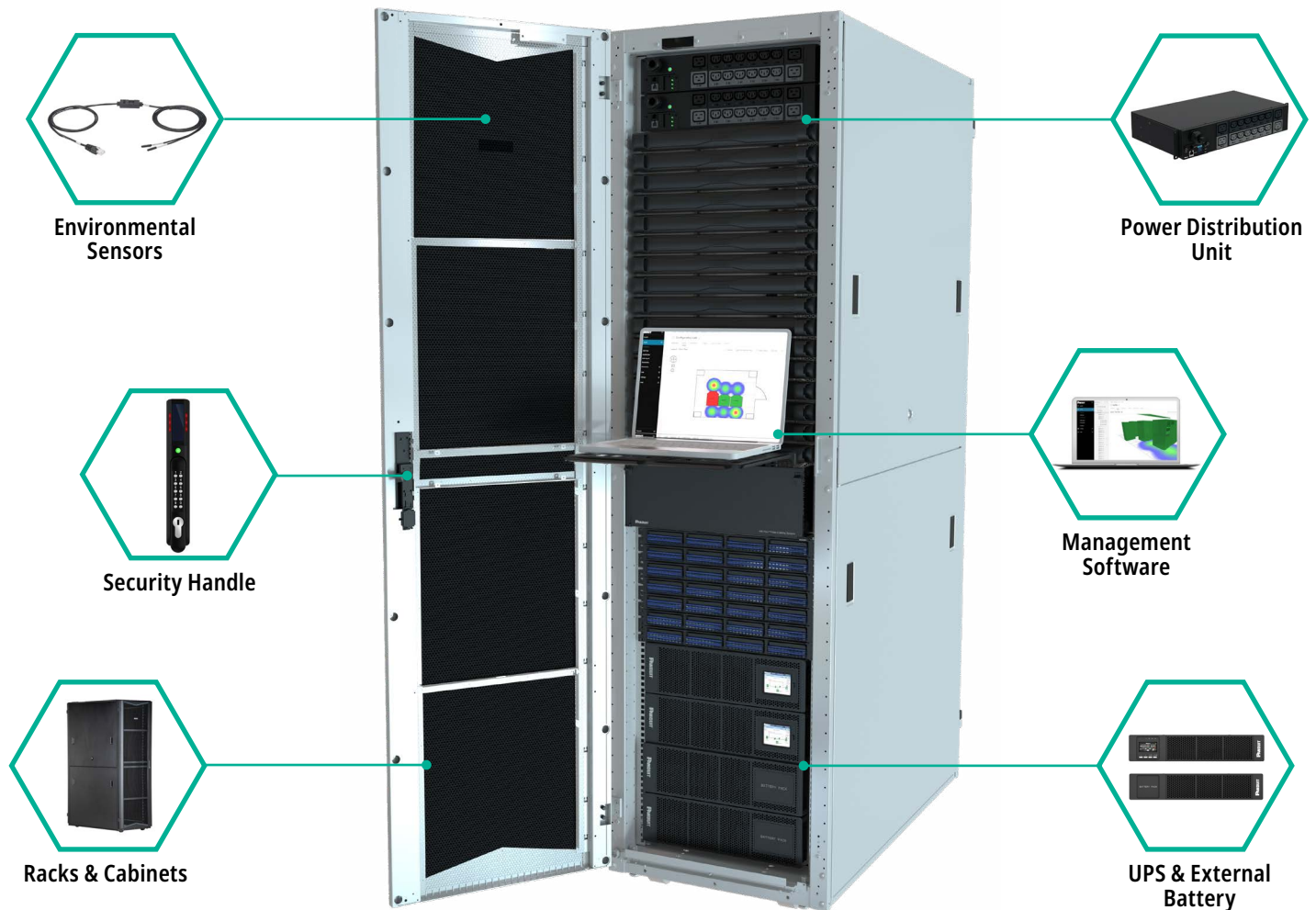
Find the exact Panduit UPS to help you hit your carbon footprint and operational efficiency goals.



Integrated Power Solutions

Our integrated power management ecosystem is the intelligent core of your data center, with our PDU functioning as the pivotal connection point. This setup establishes a seamless interaction between the resilience of UPS systems, the comprehensive distribution capabilities of our PDUs, and the acute awareness brought in by intelligent environmental sensors and rack access controls. Together, they form a cohesive network, all monitored under the vigilant eyes of third-party DCIM software.

This intelligent integration allows for precise power monitoring, proactive environmental adaptation, and fortified security, all within the robust framework of our 2 and 4-post racks and enclosures. It's this strategic alliance of technology that grants you sophisticated control over your data center operations, optimizing every aspect from performance to resource utilization, and ensuring that your critical power needs are not just met but anticipated and managed with precision.



Dive into our
Critical Power
Solutions

Product Part Numbers and Descriptions

Item Number	Region	Phase	Nominal Input Voltage (V)	Input Plug	Output Capacity (VA)	Nominal Output Voltage (V)	Output Receptacles	Battery Type	External Battery Pack	Internal Replacement Battery Cartridge	No. of RU Space
Line Interactive Steady Pulse UPS											
U01N11L	North America	Single	110/120	NEMA 5-15P	1000	110/120	(6)5-15R	Lithium-Ion	-	ULC024	4
U01S11L											
U02N11L											
U02S11L											
U03N11L											
U03S11L			NEMA L5-30P	3000	(4)5-20R, (1)L5-30R	ULC372					
Double Conversion Steady Sine UPS											
U01N11V	North America	Single	110/120	NEMA 5-15P	1000	110/120	(6)5-15R	VRLA	UVP036	UVD036	2
U01N12L	EMEA		220/230/240	Schuko CEE 7/EU1-16P and BS1363A		220/230/240	(8)C13	Lithium-Ion	-	ULC024	4
U01N12V											
U01N13V	North America		110/120	NEMA 5-15P		110/120	(6)5-15R	VRLA	UVP024	UVD024	2
U01S11V	EMEA		220/230/240	Schuko CEE 7/EU1-16P and BS1363A		220/230/240	(8)C13	Lithium-Ion	-	ULC024	4
U01S12L											
U01S12V											
U01S13V	North America		110/120	NEMA 5-15P		110/120	(6)5-15R	VRLA	UVP024	UVD024	2
U02N11V	EMEA		220/230/240	Schuko CEE 7/EU1-16P and BS1363A		220/230/240	(8)C13	Lithium-Ion	-	ULC024	4
U02N12L											
U02N12V											
U02S11V	North America		110/120	NEMA 5-20P		110/120	(6)5-20R	VRLA	UVP048	UVD048	2
U02S12L	EMEA		220/230/240	Schuko CEE 7/EU1-16P and BS1363A		220/230/240	(8)C13	Lithium-Ion	-	ULC272	4
U02S12V											
U03N11V	North America		110/120	NEMA L5-30P		110/120	(4)5-20R, (1)L5-30R	VRLA	UVP072	UVD072	2
U03N12L	EMEA		220/230/240	Schuko CEE 7/EU1-16P and BS1363A		220/230/240	(8)C13, (1)C19	Lithium-Ion	-	ULC372	4
U03N12V											
U03S11V	North America		110/120	NEMA L5-30P		110/120	(4)5-20R, (1)L5-30R	VRLA	UVP072	UVD072	2
U03S12L	EMEA		220/230/240	Schuko CEE 7/EU1-16P and BS1363A		220/230/240	(8)C13, (1)C19	Lithium-Ion	-	ULC372	4
U03S12V											
U05N11L	North America		208/240	NEMA L6-30P		208/240	(2) L6-30R, (2) L6-20R	Lithium-Ion	UVPL12H	-	4
U05N11V	EMEA		220/230/240	3 Pol Terminal (L-N-G)		220/230/240	(2)C19, (3)C13, HW Terminal (L+N+G)	Lithium-Ion	UVPL12H	-	4
U05N12L											
U05S11V	North America		208/240	NEMA L6-30P		208/240	(4)L6-30R	VRLA	UVP240	UVD240	6
U06N11L	EMEA		220/230/240	3 Pol Terminal (L-L-G)		220/230/240	(2) L6-30R, HW Terminal (L+L+G)	Lithium-Ion	UVPL12H	-	4
U06N11V											
U06N12L											
U06N12V											
U06S11V	North America	208/240	3 Pol Terminal (L-L-G)	208/240	(2)L6-30R, HW	VRLA	UVP240	UVD240	6		
U06S12V	EMEA	220/230/240	3 Pol Terminal (L-N-G)	220/230/240	(2)C13, (2)C19, HW						
U10N11L	North America	208/240	3 Pol Terminal (L-L-G)	208/240	(2) L6-30R, HW Terminal (L+L+G)	Lithium-Ion	UVPL12H	-	4		
U10N11V	EMEA	220/230/240	3 Pol Terminal (L-N-G)	220/230/240	(2)C19, (3)C13, HW Terminal (L+N+G)	Lithium-Ion	UVPL12H	-	4		
U10N12L											
U10N12V											
U10N32V	North America	Three	380/400/415	3 Pol Terminal (3P+N+PE)	10000	380/400/415, 220/230/240	HW (3P+N+PE), (L+N+G)	VRLA	UVP480	UVD480	7
U10S11V	EMEA	Single	208/240	3 Pol Terminal (L-L-G)	208/240	220/230/240	(2)L6-30R, HW	VRLA	UVP240	UVD240	6
U10S12V											
U10S32V											
U15N32V	EMEA	Three	380/400/415	3 Pol Terminal (3P+N+PE)	15000	380/400/415, 220/230/240	HW (3P+N+PE), (L+N+G)	VRLA	UVP480	UVD480	7
U15S32V											
U20N32V											
U20S32V					20000						
Step-down Transformer											
UTFMRDU	North America	Single	208	NEMA L6-30P	5000	120/208	(1) L6-30R, (12) 5-20R	-	-	-	2
Maintenance Bypass Switch											
UMB20K	EMEA		380/400/415	-	-	380/400/415, 220/230/240	HW (L+N+PE), (L1+L2+L3+N+PE)	-	-	-	3

Product Part Numbers and Descriptions (continued)

Part Number	Description	Battery Type	DC Voltage	Hot-swappable	Replacable Batteries	Internal Battery	Mounting	No. RU Space
External Batteries								
UVP024	VRLA External Battery Pack	VRLA	24	Yes	Yes	UVD024	Horizontal/Vertical	2
UVP036			36			UVD036		
UVP048			48			UVD048		
UVP072			72			UVD072		
UVP240			240			UVD240		
UVP480			480			UVD480		
UVPL12H	Lithium-Ion 5-10kVA External Battery Pack	Lithium-Ion	192		No		Horizontal/Vertical	2

Part Number	Description	Battery Type	DC Voltage	Hot-swappable
Internal Batteries				
UVC024	UPS Lead Acid Battery Cartridge	VRLA	24	Yes
UVC036			36	
UVC048			48	
UVC072			72	
ULC024	UPS Lithium-Ion Replacement Battery Cartridge	Lithium-Ion	24	
ULC048			48	
ULC372			72	
UVD024	UPS Replacement VRLA Battery Cartridge	VRLA	24	
UVD036			36	
UVD048			48	
UVD072			72	
UVD240			240	
UVD480			480	

Part Number	Description	Mounting	No. RU Space
Accessories			
UNCP01	Intelligent Network Management Card	-	-
URC005	Relay Card	-	-
U2PTRMT	Rack Mount Rail Kit	Horizontal	2
URM480			3
URMKIT2			2
UTOWFT	Tower Stabilizer Bracket	-	-

We have the knowledge
and experience to help you
make the most of your
infrastructure investment.

panduit.com/ups



Let's connect
panduit.com/contact-us

PANDUIT[®]
infrastructure for a connected world