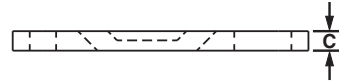
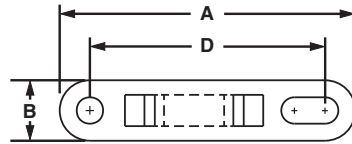




Cable Tie Plates

- Slotted mounting hole accommodates various fastener spacing
- Low profile design keeps bundle close to mounting surface

- For indoor use only
- Material: Nylon 6.6



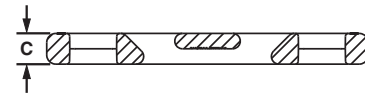
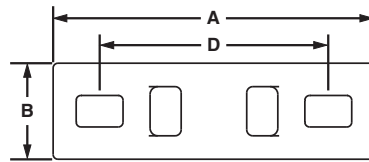
Part Number	Used with Cable Ties‡	Length A		Width B		Height C		Hole Spacing D		Color	Mil. Std. Part Number	Mounting Method	Std. Pkg. Qty.	Std. Ctn. Qty.
		In.	mm	In.	mm	In.	mm	In.	mm					
TP2-C	M, I, S	1.98	50.3	0.50	12.7	0.13	3.2	1.60	40.6	Natural	MS3341-2-9	#10 (M5) Screw	100	1000
TP4H-C	M, I, S, HS, LH, H	3.08	78.2	0.62	15.7	0.20	5.2	2.50	63.5			1/4 (M6) Screw	500	

‡Cable tie cross section sizes: M = Miniature, I = Intermediate, S = Standard, HS = Heavy-Standard, LH = Light-Heavy and H = Heavy.

Contour Multiple Tie Plates

- Designed for aerospace industry to minimize chance for abrasion
- Low profile design keeps bundle close to mounting surface

- For indoor use only
- Heat stabilized Nylon 6.6 material



Part Number	No. of Bundles	Used with Cable Ties‡	Length A		Width B		Height C		Hole Spacing D		Mounting Method	Mil. Std. Part Number	Std. Pkg. Qty.	Std. Ctn. Qty.
			In.	mm	In.	mm	In.	mm	In.	mm				
MTPC1H-E10-C39	1	M, I, S, HS, LH, H	2.09	53.1	0.63	16.0	0.20	5.2	1.50	38.1	#10 (M5) Screw	-	100	1000
MTPC2H-E10-C39	2	M, I, S, HS, LH, H	3.59	91.2	0.63	16.0	0.20	5.2	3.00	6.2				
MTPC3H-E10-C39	3	M, I, S, HS, LH, H	5.09	129.3	0.63	16.0	0.20	5.2	4.50	114.3				
MTPC4H-E10-C39	4	M, I, S, HS, LH, H	6.59	167.4	0.63	15.7	0.20	5.2	6.00	152.4				
MTPC5H-E10-C39	5	M, I, S, HS, LH, H	8.09	205.5	0.63	16.0	0.20	5.2	7.50	190.5				
MTPC6H-E10-C39	6	M, I, S, HS, LH, H	9.59	243.6	0.63	16.0	0.20	5.2	9.00	228.6				
MTPC7H-E10-C39	7	M, I, S, HS, LH, H	11.09	281.7	0.63	16.0	0.20	5.1	10.50	266.7				

‡Cable tie cross section sizes: M = Miniature, I = Intermediate, S = Standard, HS = Heavy-Standard, LH = Light-Heavy and H = Heavy.