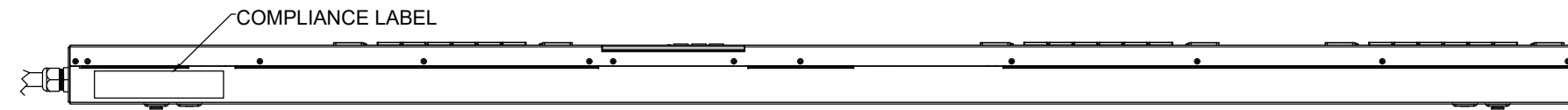
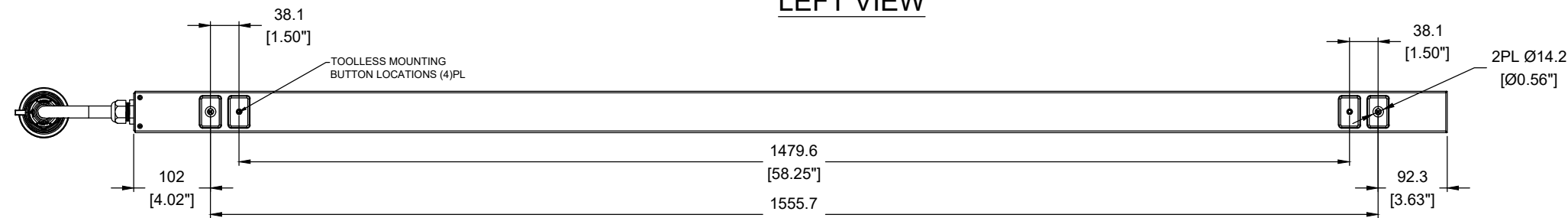


THIS COPY IS PROVIDED ON A RESTRICTED BASIS AND NOT TO BE USED IN ANY WAY DETRIMENTAL TO THE INTERESTS OF PANDUIT CORP.

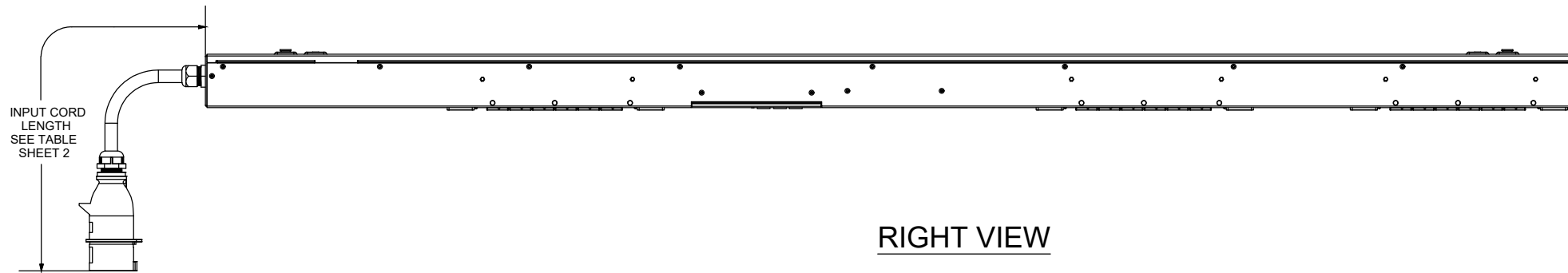
PANDUIT P/N	WEIGHT
SEE SHEET 2	SEE SHEET 2



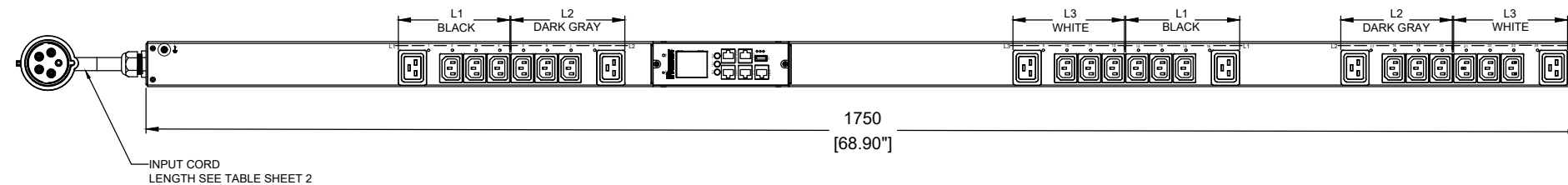
LEFT VIEW



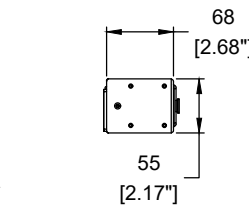
REAR VIEW



RIGHT VIEW



FRONT VIEW



BOTTOM VIEW

**SPECIFICATION:**

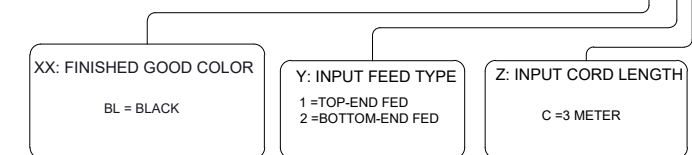
- STANDARD
  - UNIT TYPE: MONITORED AND SWITCHED PER OUTLET
  - ORIENTATION: VERTICAL, 0U FULL
  - OUTLET QTY & TYPE: (18)C13, (6)C19
  - INPUT VOLTAGE: 200-240/346-415VAC
  - INPUT FREQUENCY: 50/60HZ
  - INPUT CURRENT: 16A
  - BREAKER QTY & TYPE: NONE
  - INPUT PHASE: THREE-PHASE(WYE)
  - RATED POWER: 11 kVA
  - INPUT PLUG: IEC 60309 3P+N+E 6H 16A
  - INPUT POWER CORD: SEE SHEET 2 PART NUMBER TABLE
  - REGULATORY STANDARD: RoHS COMPLIANT
- ADDITIONAL: NONE
- ACCESSORIES:
  - DOCUMENTATION KIT
  - PRODUCT SAFETY WARNING SHEET

**NOTES:**

- PRIMARY DIMENSIONS ARE IN MILLIMETERS. SECONDARY DIMENSIONS ARE IN [INCHES]
- INSTALLATION SHALL COMPLY WITH ALL APPLICABLE NATIONAL, STATE, AND LOCAL CODES
- VISIT OUR ON-LINE CATALOG AT WWW.PANDUIT.COM FOR A CURRENT LIST OF PRODUCTS APPLICABLE FOR USE WITH THIS PART
- FOR FULL PRODUCT FUNCTIONALITY REFER TO USER MANUAL
- DRAWING VIEWS SHOW THE INPUT CORD IN THE "TOP END FED" CONFIGURATION

**IDENTIFICATION:**

FOR FINISHED GOOD PART NUMBER & DESCRIPTION TABLE SEE SHEET 2 CONFIGURABLE PART NUMBERS: **E24G07M-XXYZ**



**PLUG / RECEPTACLE BLOCK**



**PLUG**  
IEC 60309 3P+N+E 6H  
IP44 (SPLASHPROOF)  
16A, 346-415V MAX RATED INPUT



**RECEPTACLE**  
IEC 60320 C13  
10A, 250V MAX RATED OUTPUT



**RECEPTACLE**  
IEC 60320 C19  
16A, 250V MAX RATED OUTPUT


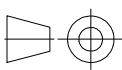
00A	08/29/2023	LL	MIM	MJD	INITIAL RELEASE	E24G07M
REV	DATE	BY	CHK	APR	DESCRIPTION	ECN

WE ASK THAT YOU CHECK FULLY THE DIMENSIONS, NOTES, AND SIGN THE CLIENT SIGNATURE BOX. THE JOB WILL NOT PROGRESS WITHOUT SIGNED APPROVAL. PLEASE DO NOT DELAY IN RETURNING PROOF AS IT WILL AFFECT DELIVERY.		SIGN
		DATE
		PRINT
TITLE <b>INTELLIGENT SERIES PDU E24G07M</b> CONTROL DRAWING		
ITEM REVISION NAME:		<b>PANDUIT</b>
DATASHEET FILE NAME:		
UNLESS OTHERWISE SPECIFIED DIMENSIONAL TOLERANCE ARE: mm [IN] Tolerance (mm) 0 < L ≤ 50 ±0.5 50 < L ≤ 250 ±1.0 250 < L ≤ 500 ±1.5 500 < L ≤ 1000 ±2.5 1000 < L ≤ 2000 ±4.0		MATERIAL / COLOR: <b>N/A</b>
THIRD ANGLE PROJECTION		DRAWING NUMBER: <b>E24G07M_DC</b>
DRAWN BY LL	DATE 08/29/2023	CHK MIM
SCALE NONE	SHT 1 OF 2	
		SCALE <b>B</b>

THIS COPY IS PROVIDED ON A RESTRICTED BASIS AND NOT TO BE USED IN ANY WAY DETRIMENTAL TO THE INTERESTS OF PANDUIT CORP.

FINISHED GOOD PART NUMBER	FINISHED GOOD DESCRIPTION	COLOR	INPUT CORD LENGTH	WEIGHT
E24G07M	MSPO PDU, 16A, (18)C13 (6)C19, IEC 60309 3P+N+E 6h IP44-3M, TOP-FED, BLACK	BLACK(RAL 9005)	3M(+254MM/-127MM)[10'(+10"/-5")]	7.3kg

00A	08/29/2023	LL	MIM	MJD	INITIAL RELEASE	E24G07M
REV	DATE	BY	CHK	APR	DESCRIPTION	ECN

WE ASK THAT YOU CHECK FULLY THE DIMENSIONS, NOTES, AND SIGN THE CLIENT SIGNATURE BOX. THE JOB WILL NOT PROGRESS WITHOUT SIGNED APPROVAL. PLEASE DO NOT DELAY IN RETURNING PROOF AS IT WILL AFFECT DELIVERY.		SIGN
		DATE
		PRINT
TITLE <b>INTELLIGENT SERIES PDU E24G07M</b> CONTROL DRAWING		
ITEM REVISION NAME:		
DATASHEET FILE NAME:		
UNLESS OTHERWISE SPECIFIED DIMENSIONAL TOLERANCE ARE: mm [IN]		MATERIAL/COLOR:
Tolerance (mm) 0 < L ≤ 50 ±0.5 50 < L ≤ 250 ±1.0 250 < L ≤ 500 ±1.5 500 < L ≤ 1000 ±2.5 1000 < L ≤ 2000 ±4.0		N/A
 THIRD ANGLE PROJECTION		DRAWING NUMBER:
		<b>E24G07M_DC</b>
DRAWN BY	DATE	SCALE
LL	08/29/2023	NONE
CHK		
MIM		
SHT 2 OF 2		SCALE
		<b>B</b>