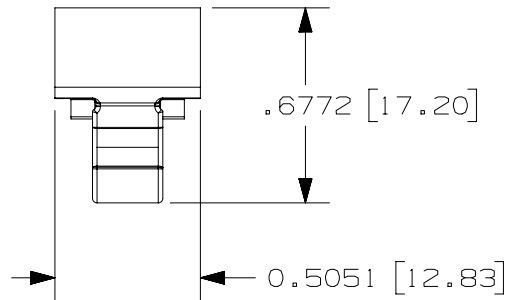
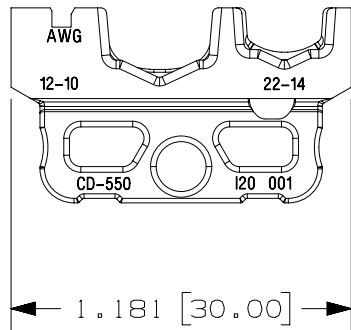
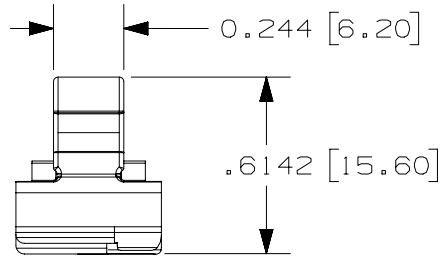
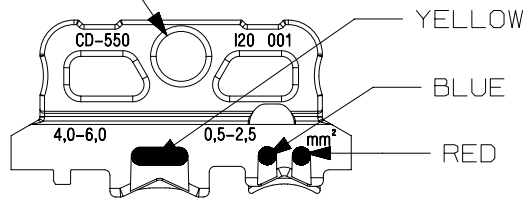
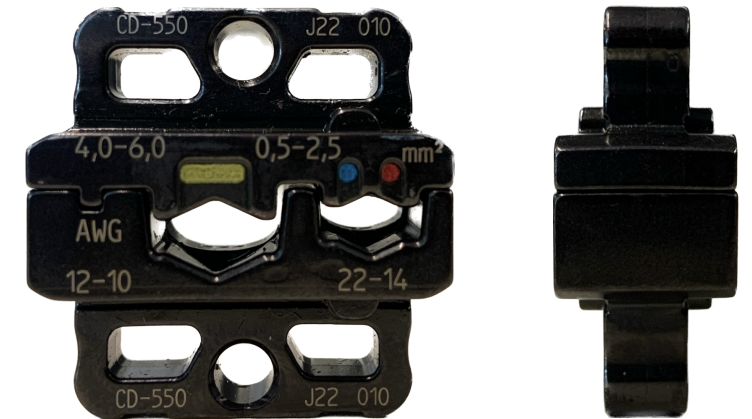


.173 [4.39] DIA
(2 PLCS)



NOTES, UNLESS OTHERWISE SPECIFIED:

- PART MUST BE RoHS COMPLIANT.
- PANDUIT PART #: CD-550
- DIE SET TO BE LUBRICATED TO PREVENT CORROSION IN TRANSIT.
- DIE INSERT SET WEIGHT: 1.53 OZ. (43.41 GRAMS)
- CT-2550CH OR CD-550:
DIE INSERT OR CRIMPING HEAD (NOT SHOWN) FOR INSTALLING THE FOLLOWING PANDUIT PRODUCTS:
#22-#10 AWG (0,5-6,0 mm²) INSULATED TERMINALS AND SPLICES;
AND SPECIFIC INSULATED DISCONNECTS.
REDUCED CRIMP EFFORT ADVANTAGE FOR #12-#10 AWG (4,0-6,0 mm²)
- THE DIE INSERT AND/OR CRIMPING HEAD (NOT SHOWN) INSTALLATION INSTRUCTIONS CAN BE FOUND AT WWW.PANDUIT.COM, SEARCH FOR CT-2525CH,CT-2550CH, CT-2570CH,CT-2500CH,CD-525, CD-550 OR CD-570.
- USED IN CT-2300 SERIES TOOLS, CT-2500CH AND CT-2550CH CRIMP HEADS.



| POCKET SIZE | SHUT HT. PIN DIA [IN] | mm |
|-------------|-------------------------|----|
| 12-10 | 3.73-3.93 [.147-1.55] | |
| 22-14 | 2.56-2.76 [.101-.109] | |

NOTE: PIN DIAMETER BASED UPON DIES BEING FULLY CLOSED

| REV | DATE | BY | CHK | APR | DESCRIPTION | ECN |
|-----|------------|------|------|------|---|-----------|
| 01A | 03/14/23 | SAHR | -- | MRWA | F. UPDATED DRAWING TITLE D. UPDATED DIE IMAGE C. REVISED WEIGHT (NOTE 4) B. REVISED POCKET SIZE CHART A. UPDATED TO MIM DIE MODEL | 129341/00 |
| 00 | 10-23-2019 | JEH | BJPU | JADE | RELEASED | 053328 |

| | | | |
|---|----------------------------|-----------------|--------|
| TITLE | | CD-550 DIE SET | |
| CUSTOMER DRAWING | | | |
| ITEM REVISION NAME | R29572BA/01 | PANDUIT | |
| DATASET FILE NAME | R29572BA_DC_TP29572B01/01A | | |
| UNLESS OTHERWISE SPECIFIED, DIMENSIONAL TOLERANCES ARE: IN [mm] | | MATERIAL: | |
| .x ± .1 [2.54] | .xxx ± .005 [.127] | SEE NOTES | |
| .xx ± .01 [.25] | ANGLES ± 1° | DRAWING NUMBER: | |
| THIRD ANGLE PROJECTION | | TP29572B01 | |
| DRAWN BY | DATE | CHK | SCALE |
| JEH | 10-23-2019 | BJPU | NONE |
| SHT 1 OF 1 | | | SIZE B |