

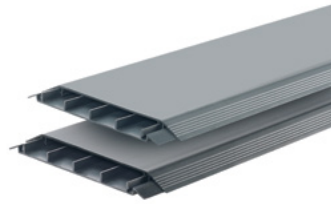
Pan-Way® Above Floor Raceway System

North America and Latin America

PANDUIT
SPECIFICATION SHEET

SPECIFICATIONS

Above Floor Raceway non-metallic multi-channel surface raceway shall be used to route, protect, and conceal data, voice, video, fiber optic and power cabling. The raceway shall be listed as suitable for use in applications up to 600 volts between conductors by Underwriters Laboratories, Inc. per standard 5A, and by Canadian Standards Association, Inc. per 22.2 no. 62.1-03, when screw secured and installed per instructions. A full line of fittings is available as well as a junction box to install a variety of communication and electrical devices. Four channel design separates cable types. Standard "screw-on" faceplates for data and power terminations shall be available. Above floor raceway will be manufactured from impact-resistant material with flammability rating of V-0 and must be tamper resistant yet, also allow access for moves, adds, and changes. Above Floor Raceway finish shall be pure color, resist scratches and dents, will not peel or corrode and be available in two standard colors. Above Floor Raceway shall be optimized for use with the Pan-Net® and Net-Key® Communication Systems.



TECHNICAL INFORMATION

Material:	Rigid PVC
Flammability:	UL94V-0 FT4
Voltage rating:	UL-5A 600 VAC CSA C22.2 No. 62.1-03 600 V
Approvals:	UL Listed 95425 (raceway) UL Listed E116129 (fittings)
NEC:	Article 388
Load rating:	2,000 lbs.

KEY FEATURES AND BENEFITS

ADA compliant:	Meets 2010 American Disability Association standards by design
1" bend radius control fittings:	Cables in the raceway will satisfy the minimum 1" bend radius requirement, Preventing the potential degradation of cable performance; meets TIA/EIA Standard and many warranty requirements
Tamper resistant:	Difficult for untrained personnel to enter the raceway or remove faceplates; provides security for communication cabling and safety for power cabling
Designer profile:	Aesthetically pleasing and matches a wide variety of decors with two standard color options available: BL (Black) or OS (Office Slate)
Non-metallic construction:	Lightweight raceway reduces installer fatigue; solid color throughout profile will not chip peel, rust, corrode, or scratch; easy to cut reducing the need for special cutting devices; easy to snap together base and cover; high impact resistance; durable

APPLICATIONS

Pan-Way Above Floor Surface Raceway is a multi-channel raceway which provides solutions for routing low voltage, fiber optic and/or power cabling over floors. Above Floor Surface Raceway can mount NEMA standard screw-on faceplates directly to the junction box and can transition to T-70 raceway for cable routing along walls.

Above Floor Raceway

Base and cover, 6 ft. AFR4BCBL6

Above Floor Raceway Fittings

Fittings coupler fitting:	AFR4CC**
Transition to T70 fitting:	AFR4TRT70**
Right angle fitting:	AFR4RA**
End cap fitting:	AFR4EC**
Junction box:	AFR4JB2S**
Wall transition fitting:	AFR4WTR**
Table leg fitting:	AFR4TLBG**

Accessories

GFCI Mini-Com® adapter:	CFG4BL*
GFCI NetKey® adapter:	NK4RMFBL*

T70 Parts

T-70 base 6 foot length:	T70B++6
T-70 cover 6 foot length:	T70C++6
T-70 end cap fitting:	T70EC++

**Colors: BL (Black) or OS (Office Slate)
++Colors: Off-White (IW), Electric Ivory (EI), or White (WH)
Note: Compatible with industry-standard GFI faceplates



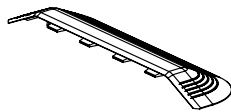
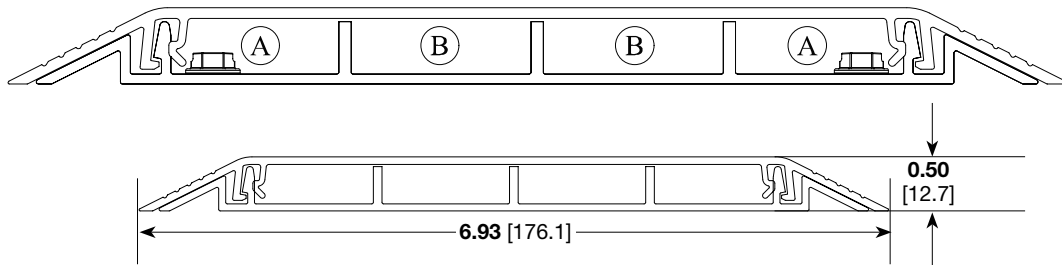
All Part Numbers Compliant with the U.S. Trade Agreements Act (TAA) for purchases shipped to the United States.

Pan-Way® Above Floor Raceway System

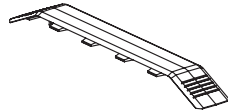
WIRE FILL CHART

Raceway type and configuration	Fill Area (in 2)	Electrical Cables			Data Grade Cables												Coax Cables				Fiber Optic			
		14	12	10	24 AWG		24 AWG		24 AWG		24 AWG		24 AWG		24 AWG		24 AWG		24 AWG		24 AWG			
		THN/THWN/T90			Cat 5eP		Cat 5eR		Cat 6		Cat 6A		Cat 6A		Cat 6A		Cat 6A (SD)		RG6		RG59/u		2-Strand	
		0.111	0.13	0.164	0.193		0.225		0.24		0.289		0.3		0.33		0.24		0.275		0.242		0.175	
		Fill			Fill		Fill		Fill		Fill		Fill		Fill		Fill		Fill		Fill		Fill	
		Max	Max	Max	Spec	Max	Spec	Max	Spec	Max	Spec	Max	Spec	Max	Spec	Max	Spec	Max	Spec	Max	Spec	Max	Spec	Max
AFR4 — Outer Channel (with screws) See Fig. A	0.3370	21	15	10	5	7	3	5	3	4	2	3	2	3	2	2	3	4	2	3	3	4	6	8
AFR4 — Inner Channel See Fig. B	0.3838	24	17	11	5	8	4	6	3	5	2	4	2	3	2	3	3	5	3	4	3	5	6	10

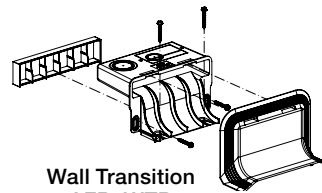
ENGINEERING DRAWINGS



End Cap
AFR4EC



Coupler
AFR4CC



Wall Transition
AFR4WTR

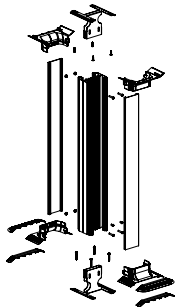
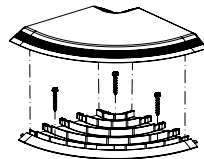
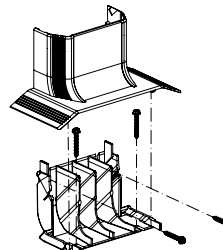


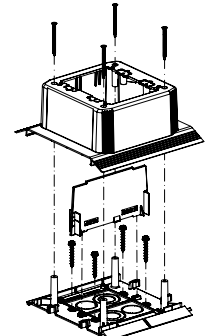
Table Leg
AFR4TLBG



Right Angle
AFR4RA



T70 Transition
AFR4TRT70



Junction Box
AFR4JB2S

Dimensions are in inches. [Dimensions in brackets are metric].

WORLDWIDE SUBSIDIARIES AND SALES OFFICES

PANDUIT US/CANADA
Phone: 800.777.3300

PANDUIT EUROPE LTD.
London, UK
Phone: 44.20.8601.7200

PANDUIT SINGAPORE PTE. LTD.
Republic of Singapore
Phone: 65.6305.7575

PANDUIT JAPAN
Tokyo, Japan
Phone: 81.3.6863.6000

PANDUIT LATIN AMERICA
Guadalajara, Mexico
Phone: 52.33.3777.6000

PANDUIT AUSTRALIA PTY. LTD.
Victoria, Australia
Phone: 61.3.9794.9020

For a copy of Panduit product warranties, log on to www.panduit.com/warranty

PANDUIT®

For more information
Visit us at www.panduit.com
Contact Customer Service by email: cs@panduit.com
or by phone: 800.777.3300

© 2024 Panduit Corp.
ALL RIGHTS RESERVED.
RKSP231-WW-ENG
6/2024