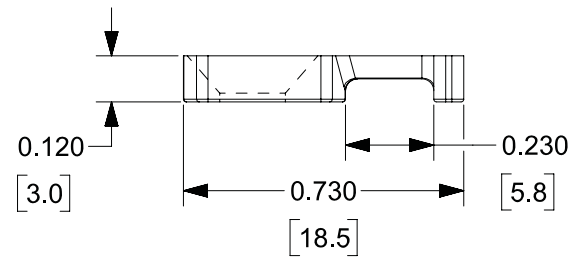
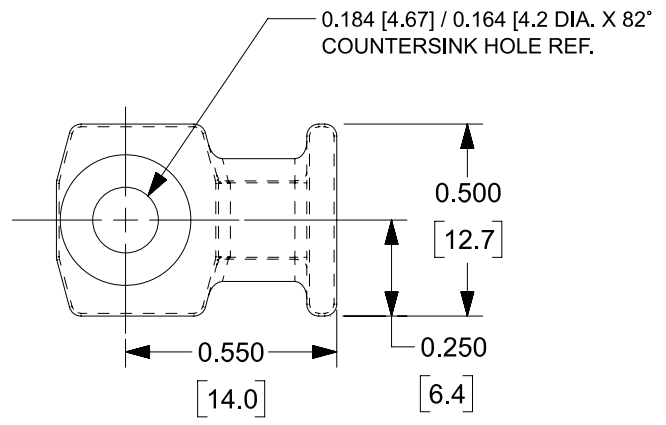


THIS COPY IS PROVIDED ON A RESTRICTED BASIS AND IS NOT TO BE USED IN ANY WAY DETRIMENTAL TO THE INTERESTS OF PANDUIT CORP.

PANDUIT * PART NO.	USE WITH ANY OF THESE CABLE TIE CROSS-SECTIONS	WEIGHT lbs / 100 pcs. (g)	SCREW SIZE	QTY.
LPMS-S8-C	MINIATURE INTERMEDIATE STANDARD	0.102	#8 (M4)	100
LPMS-S8-M		[46.3]		1000



NOTES:  
 \* 1) SEE CURRENT PRICE SHEET FOR PART NUMBER SUFFIX DESIGNATION FOR PACKAGE SIZE AND COLOR.

- 2) MATERIAL:  
 -     NATURAL NYLON 6/6  
 - 20 BLACK NYLON 6/6

REV	DATE	BY	CHK	APR	DESCRIPTION	ECN
2	3/10/2020	RVU	DJW	JHAC	REBUILD MODEL AND RECREATE. Remove material *-0 weather resistant black nylon 6.6". CHANGE NOTE 2, MATERIAL -20 BLACK NYLON 6/6.	GAECN05597
1	2/1/06	JAD			ADDED NOTE 2, 0.74 (REF.) WAS 0.75, 0.184 / 0.164 WAS 0.180 / 0.164.	GB0239HG
R	6/6/01	LGG			REVISED DRAWING FROM SS-5783-A-RV 3 TO NEW DRAWING NUMBER.	GB0239HG

TITLE <b>LOW PROFILE MOUNT LPMS-S8</b>					
CUSTOMER DRAWING					
ITEM REVISION NAME G03597HS/01				<b>PANDUIT</b>	
DATASET FILE NAME G03597HS_DC_GB0239HG/01					
UNLESS OTHERWISE SPECIFIED, DIMENSIONAL TOLERANCES ARE: IN [ mm ]					
.x ± -		.xxx ± .020 [ .5 ]		MATERIAL: <b>SEE NOTE 2</b>	
.xx ± -		ANGLES ± -		DRAWING NUMBER: GB0239HG	
DRAWN BY LGG			DATE 6/6/01	CHK JHAC	SCALE NONE
THIRD ANGLE PROJECTION				SHT 1 OF 1	
SIZE A					

D10100DA/20