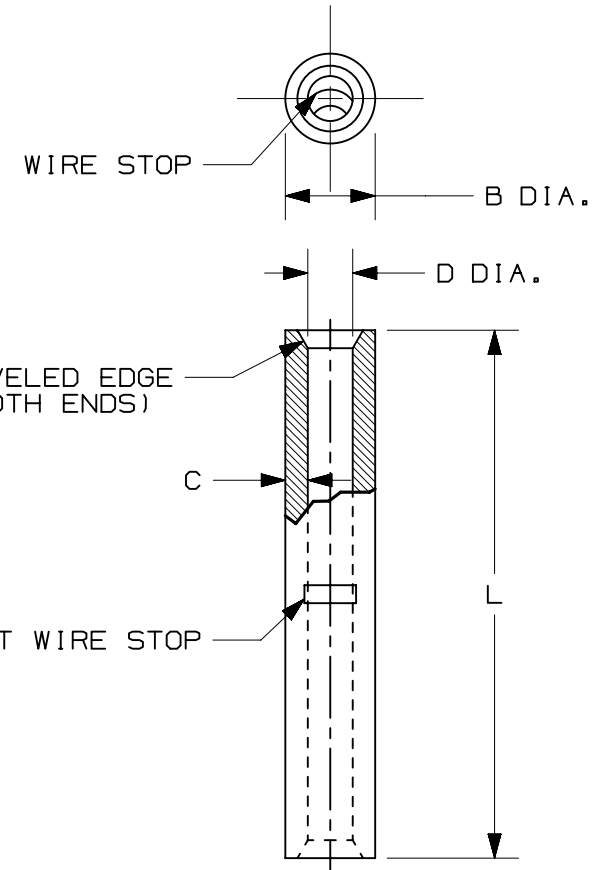


THIS COPY IS PROVIDED ON A RESTRICTED BASIS AND IS NOT TO BE USED IN ANY WAY DETRIMENTAL TO THE INTERESTS OF PANDUIT CORP.

PANDUIT PART #	WIRE RANGE AWG [mm ²]	DIMENSIONS in. [mm]			
		L ± .03 [0,76]	B DIA. ± .01 [0,25]	C ± .003 [0,076]	D DIA. ± .01 [0,25]
BS22	#26-22 [0,25-0,5]	.47 [11,9]	.08 [2,0]	.02 [0,5]	.04 [1,0]



- NOTES:
- USED FOR:
 - A. #26-22 [0,25-0,5mm²] SOLID OR STRANDED COPPER WIRE
 - B. 302°F [150°C] MAX. TEMPERATURE RATING
 - INSTALLATION TOOLS:
 - A. PANDUIT APPROVED: CT-100A, CT-200, CT-160, CT-260
 - WIRE STRIP LENGTH: 9/32 ^{+1/32} [7,1 ^{+0,8}]
 - MATERIAL:
 - A. STAMPING: .02 [0,5] COPPER, TIN PLATED
 - SEE www.panduit.com FOR PACKAGE QUANTITIES INDICATED BY PART NUMBER SUFFIX
 - DIMENSIONS IN BRACKETS ARE METRIC EQUIVALENT

REV	DATE	BY	CHK	APR	DESCRIPTION	ECN
09	12.07.22	JHNU	JHNU	MRWA	REVISED TOLERANCE FOR C: ±.003 [0,076] WAS ±.03 [0,76]	127218
08	10.08.19	JHNU	RGB	RGB	REVISED DIMENSION NAME IN TABLE: D DIA WAS B DIA	N41336BA-A41336
07	10.20.14	JHNU	JHNU	RGB	REMOVED UL & CSA FROM NOTE 2	N41336BA-A41336
06	09.06.12	JBN	LCA	VMB	REVISED NOTES. ADDED METRIC EQUIVALENTS. UPDATED DRAWING TO CURRENT STANDARD.	A41336

TITLE		BUTT SPLICE, NON- INSULATED #26-22		
		CUSTOMER DRAWING		
ITEM REVISION NAME		N41336BA/09		
DATASET FILE NAME		N41336BA_DC/09A		
UNLESS OTHERWISE SPECIFIED, DIMENSIONAL TOLERANCES ARE: IN [mm]		MATERIAL:		
.x ± .1 [2.54] .xxx ± .005 [.13]		SEE NOTES		
.xx ± .01 [.25] ANGLES ± 5 °		DRAWING NUMBER:		
		A41336		
DRAWN BY	DATE	CHK	SCALE	SIZE
DAW	-	-	N.T.S	A
SHT 1 OF 1				

D10100DA/15