

# TX6A™ Category 6A LSZH UTP FieldCord™ Connectors

## SPECIFICATIONS

The TX6A Low Smoke Zero Halogen (LSZH) UTP FieldCord Connector shall be a simple connection solution for nearly any RJ45 plug-attached network device. The FieldCord Connector shall combine a novel field-mateable splice, Vari-MaTriX Category 6A LSZH UTP twisted pair 23 AWG cable, and an ultracompact RJ45 plug in one assembly. The FieldCord Connector shall enable connection to devices with the smallest port spaces and most confined cable routing paths. The TX6A FieldCord Connector shall provide Category 6A performance and shall be compatible with Category 6 and 5e UTP systems.



## TECHNICAL INFORMATION

<b>Category 6A/Class E<sub>A</sub> performance:</b>	Exceeds ANSI/TIA-568.2-D Category 6A and ISO 11801 Class EA Channel performance requirements with up to two TX6A FieldCord Connectors in channel. Meets or exceeds TIA Modular Plug Terminated Link requirements with one TX6A FieldCord Connector in link.
<b>Cable compatibility:</b>	Compatible with 4-pair, 22–26 AWG solid or stranded unshielded twisted pair cable with conductor insulation diameters of 0.060 (1.52) maximum and overall cable O.D. 0.189 in. - 0.272 in. (4.80 - 6.91)
<b>IEC compliance:</b>	IEC 60603-7, IEC 60529 (IP 20)
<b>FCC and ANSI compliance:</b>	Meets ANSI/TIA-1096-A (formerly FCC Part 68)
<b>PoE and PoH compliance:</b>	Supports IEEE 802.3af / 802.3at (PoE/PoE+) and 802.3bt type 3 and type 4 (PoE++) applications. Supports Power over HDBaseT up to 100 watts..
<b>UL compliance:</b>	UL 1863 (Use as communications circuit accessory)
<b>Cable Flame Rating:</b>	IEC-60332-1; IEC-60754; IEC-61034; EuroClass Cca-s1a, d1, a1
<b>RoHS compliance:</b>	Compliant
<b>Plug mating cycles:</b>	Rated to 2500 mating cycles
<b>Operating temperature:</b>	+14°F-+167°F (-10°C-+75°C)
<b>Storage temperature:</b>	-40°F-+167°F (-40°C-+75°C)
<b>Required installation tool:</b>	EGPT

## KEY FEATURES AND BENEFITS

<b>Small diameter 6A UTP 23 AWG cable:</b>	Small cable diameter allows fit into tight cable routing spaces and minimizes required bend radius
<b>Small plug size:</b>	Easily fits in tight port spaces of network devices where other connectors are too large
<b>22-26 AWG termination capable:</b>	Works with all commonly used solid or stranded UTP cabling
<b>TG-style termination technology:</b>	Proven electrical performance and quick installation speed from the same forward-motion termination technology used in Mini-Com® TG Modular Jacks
<b>Category 6A, 6, and 5e compatibility:</b>	High performance capability and wide cable size range enable a single plug for all common UTP cabling systems
<b>FieldCord Splice re-termination:</b>	Ability to re-terminate FieldCord Splice Connector up to 20 times with no additional parts, providing convenience and cost-savings in cases when FieldCord Connector must be re-terminated to cable

Continue to next page

## TX6A Category 6A LSZH UTP FieldCord Connectors

**FieldCord Connector, Cat 6A UTP LSZH (Cca) RJ45** FC-ICCY\*MWH

**FieldCord Connector Cat 6A UTP LSZH (Cca) RJ45 Cord, 3M, White (with loose cord):** FC-ICC/Y3MWH

**Category 6A UTP FieldCord Connector Assembly** FC-ISC

## Tools and Accessories

**Compact Termination tool:** EGPT

**Cable jacket stripping tool:** CJAST

**Wire snipping tool:** CWST

\*Meter lengths: 0.5 or 1

\*\* Replace with BU (Blue) or WH (White)



All Part Numbers Compliant with the U.S. Trade Agreements Act (TAA) for purchases shipped to the United States.

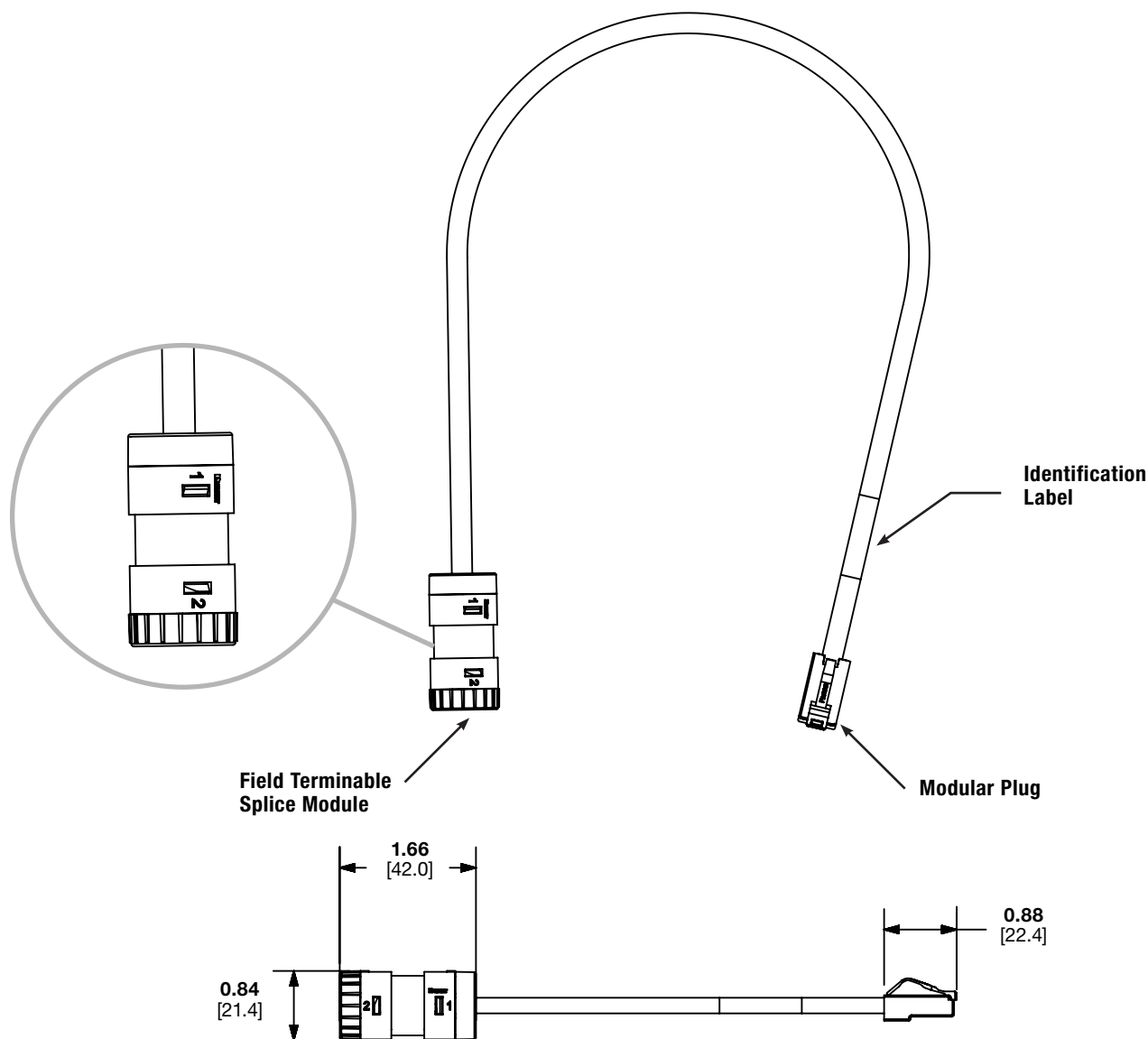
# TX6A™ Category 6A LSZH UTP FieldCord™ Connectors

## APPLICATIONS

The TX6A FieldCord Connector is ideal for connecting network devices requiring a plug connection to the network and where the plug port area and/or the cable routing path in the network device is too small to use TX6A Field Term Plugs. Typical applications include:

- Network cameras and motion sensors
- Wireless access points (WAPs) small to use Power over Ethernet (PoE) LED lighting
- Power over Ethernet (PoE) LED lighting
- Building access control points
- Network-attached Audio/Video equipment
- Other PoE or HDBASE-T powered network devices

## ENGINEERING DRAWINGS



Dimensions are in inches. [Dimensions in brackets are metric].

### WORLDWIDE SUBSIDIARIES AND SALES OFFICES

PANDUIT US/CANADA  
Phone: 800.777.3300

PANDUIT EUROPE LTD.  
London, UK  
Phone: 44.20.8601.7200

PANDUIT SINGAPORE PTE. LTD.  
Republic of Singapore  
Phone: 65.6305.7575

PANDUIT JAPAN  
Tokyo, Japan  
Phone: 81.3.6863.6000

PANDUIT LATIN AMERICA  
Guadalajara, Mexico  
Phone: 52.33.3777.6000

PANDUIT AUSTRALIA PTY. LTD.  
Victoria, Australia  
Phone: 61.3.9794.9020

For a copy of Panduit product warranties, log on to [www.panduit.com/warranty](http://www.panduit.com/warranty)

For more information

Visit us at [www.panduit.com](http://www.panduit.com)  
Contact Customer Service by email: [cs@panduit.com](mailto:cs@panduit.com)  
or by phone: 800.777.3300

**PANDUIT**®

© 2023 Panduit Corp.  
ALL RIGHTS RESERVED.  
COSP561-WW-ENG  
11/2023