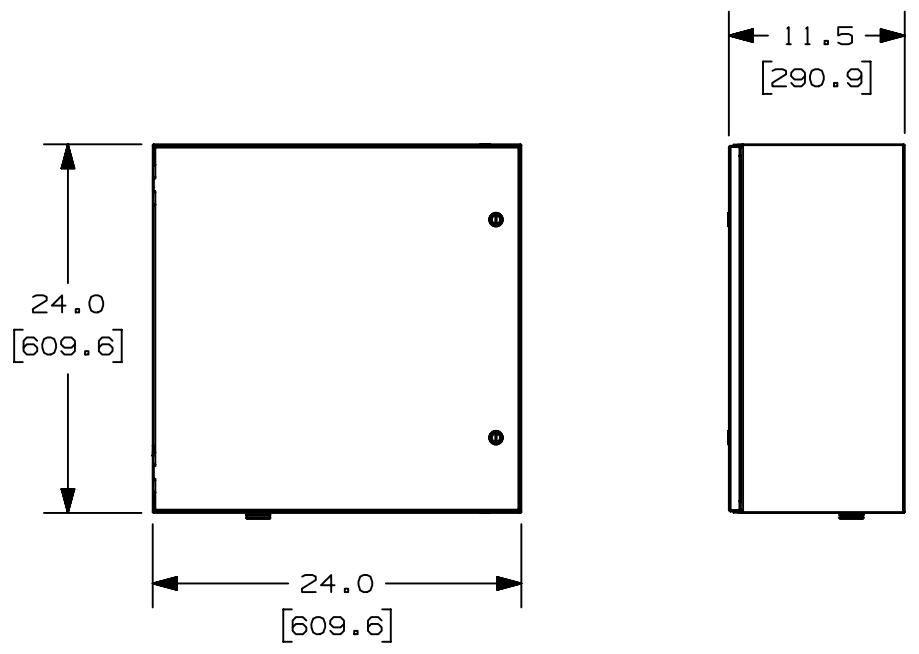


THIS COPY IS PROVIDED ON A RESTRICTED BASIS AND IS NOT TO BE USED IN ANY WAY DETRIMENTAL TO THE INTERESTS OF PANDUIT CORP.



WIDTH	HEIGHT	DEPTH	WEIGHT
24.0"	24.0"	11.6"	95 LBS 43 KG

NOTES:

- DIMENSIONS IN PARENTHESES ARE IN METRIC.
- ENCLOSURE INCLUDES:
 - (2) CABLE MANAGEMENT SIDE PANELS
 - (1) TOP SLACK PLATE
 - (1) 1/2" CONDUIT PLUG FOR POWER ENTRY
 - (1) 6 PORT GROUND BAR
 - (4) EXTERNAL MOUNTING FEET
 - (1) PROTECTIVE AC WIRING COVER
 - (1) DIN RAIL FOR SWITCHES (16.0")
 - (1) DIN RAIL FOR POWER ACCESSORIES (20.5")
 - (1 OR 2) 8 PORT DIN RAIL MOUNT COPPER PATCH MODULE (CDPP8RG)
 - (1 OR 2) 8 PORT DIN RAIL MOUNT FIBER PATCH MODULE (FDME8RG)
 - (1) 6 OR 12 PORT FIBER UPLINK PATCH PANEL (6 PORT - CBXF6BL-AY, 12 PORT - CBXF12BL-AY)
 - (1) FIBER SLACK SPOOL
 - (1) STRAIN RELIEF BAR
 - (10) CABLE MANAGEMENT L RINGS
- ALL ZONE SYSTEMS ARE WALL MOUNTABLE WITH THE OPTION TO USE OUTSIDE EXTERNAL MOUNTING FEET.
- ALL ENCLOSURES ARE NEMA TYPE 4/12 AND IP66 RATED.
- 316 STAINLESS STEEL ENCLOSURES ARE RATED NEMA 4X.
- STEEL AND STAINLESS STEEL ENCLOSURES ARE MADE FROM 16 GAUGE STEEL.

1/2" CONDUIT PLUG FOR POWER ENTRY

TITLE
 NETWORK ZONE SYSTEM, 24" X 24" ENCLOSURE WITH CABLE MANAGEMENT ACCESSORIES
 CUSTOMER DRAWING

ITEM REVISION NAME
 15V510BD/01

DATASET FILE NAME
 15V510BD_DC_01A

UNLESS OTHERWISE SPECIFIED, DIMENSIONAL TOLERANCES ARE: IN [mm]
 .x ± .1 [2.54] .xxx ± .005 [.127]
 .xx ± .01 [.25] ANGLES ± 5 °



MATERIAL:
 N/A



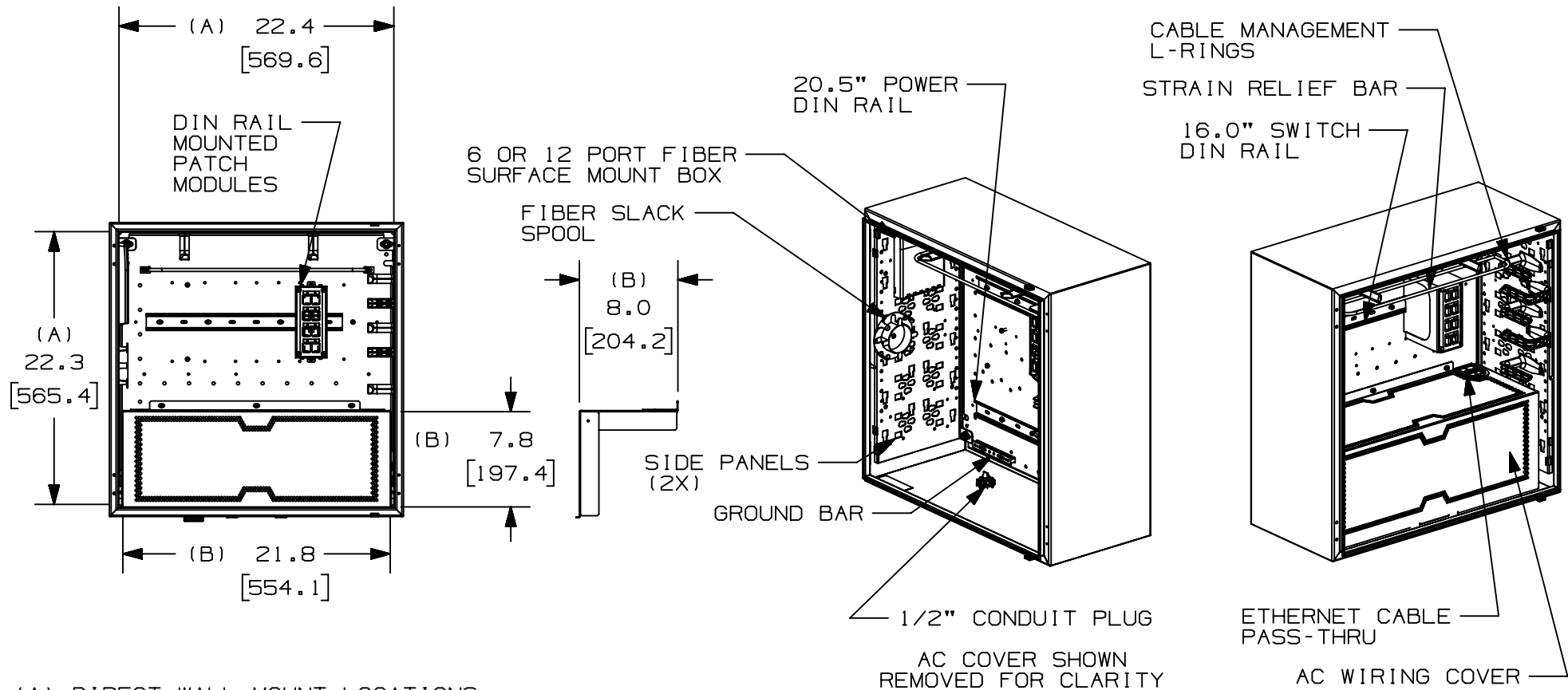
THIRD ANGLE PROJECTION

DRAWING NUMBER:
 15V510BD_DC

REV	DATE	BY	CHK	APR	DESCRIPTION	ECN
01A	3/11/20	TYSH	SCL	KGA	RELEASED TO CUSTOMER	15V510BD
00A	2/21/18	JBO	NWW	TIMH	RELEASED TO CUSTOMER	15V510BD

DRAWN BY	DATE	CHK	SCALE	SHT 1 OF 2	SIZE
JBO	2/21/18	NWW	2:25		A

THIS COPY IS PROVIDED ON A RESTRICTED BASIS AND IS NOT TO BE USED IN ANY WAY DETRIMENTAL TO THE INTERESTS OF PANDUIT CORP.



(A) DIRECT WALL MOUNT LOCATIONS
DOOR REMOVED FOR CLARITY
(B) DIMENSIONS UNDER THE AC WIRE COVER
AND OVER THE MOUNT PLATE

						TITLE NETWORK ZONE SYSTEM, 24" X 24" ENCLOSURE WITH CABLE MANAGEMENT ACCESSORIES CUSTOMER DRAWING						
						ITEM REVISION NAME 15V510BD/01		PANDUIT				
						DATASET FILE NAME 15V510BD_DC_01A						
						UNLESS OTHERWISE SPECIFIED, DIMENSIONAL TOLERANCES ARE: IN [mm]		MATERIAL: N/A				
						.x ± .1 [2.54] .xxx ± .005 [.127] .xx ± .01 [.25] ANGLES ± 5 °		DRAWING NUMBER: 15V510BD_DC				
01A	3/11/20	TYSH	SCL	KGA	REFER TO SHEET 1	15V510BD						
REV	DATE	BY	CHK	APR	DESCRIPTION	ECN	DRAWN BY JBO	DATE 2/21/18	CHK NWW	SCALE 2:25	SHT 2 OF 2	SIZE A