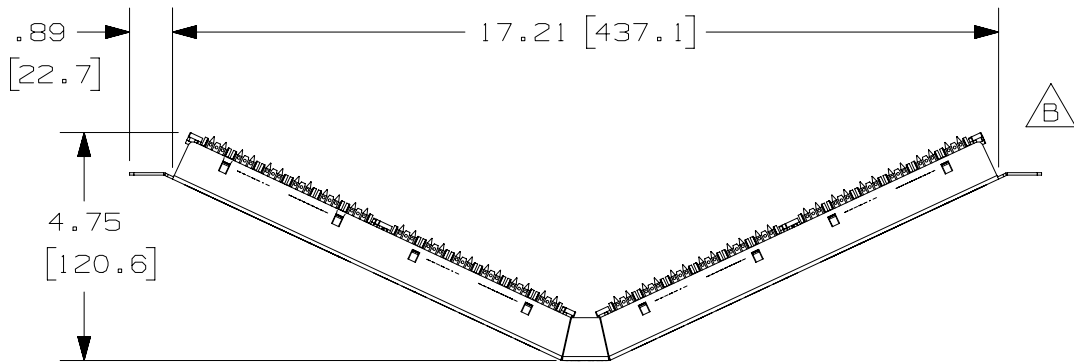


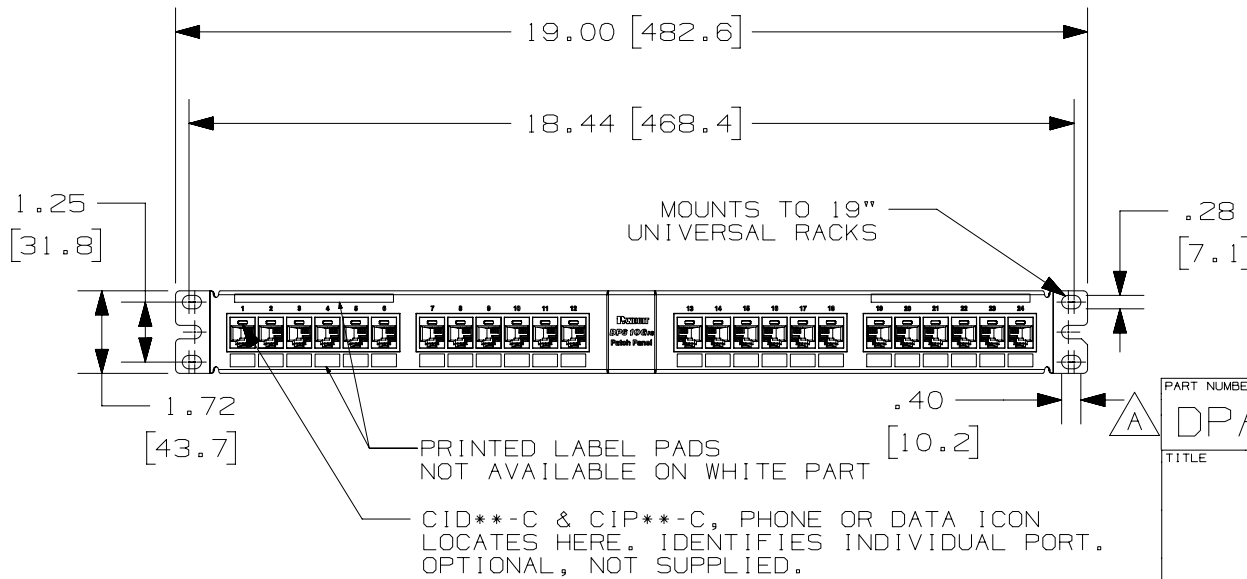
THIS COPY IS PROVIDED ON A RESTRICTED BASIS AND IS NOT TO BE USED IN ANY WAY DETRIMENTAL TO THE INTERESTS OF PANDUIT CORP.



PANDUIT PART NUMBER	WEIGHT
DPA246X88TGY	1.26 lb (1070.48 g)
DPA246X88TGWH	1.26 lb (1070.48 g)

NOTES:

- SEE CURRENT CATALOG FOR VARIOUS APPLICATIONS AS WELL AS OPTIONAL ICONS.
- MATERIAL:
 PANEL HOUSING: STEEL
 RJ45 MODULES: THERMOPLASTIC RESIN UL94V-0
 PUNCHDOWN BLOCKS: THERMOPLASTIC RESIN UL94V-0
 BEZEL ASSEMBLY: THERMOPLASTIC RESIN UL94H-B
 RETENTION CAP: THERMOPLASTIC RESIN UL94V-0
- 24 PORT ANGLED PATCH PANEL 8 POSITION 8 WIRE.
- THE PATCH PANEL IS DESIGNED FOR MOUNTING TO 19" UNIVERSAL RACKS.
- FOUR (4) 12-24 X 1/2" ROUND HEAD SCREWS ARE PROVIDED FOR FASTENING TO RACKS.
- DIMENSIONS IN BRACKETS ARE IN METRIC.
- USE 110 STYLE TERMINATION TOOL FOR PUNCHDOWN.
- RETENTION CAPS (ONE PER CONNECTOR) PROVIDED FOR SNAP-IN ON TERMINATED CONNECTORS.

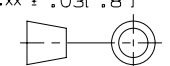


PART NUMBER
DPA246X88TGY ; DPA246X88TGWH

TITLE
DP6A 10GIG 24 PORT ANGLED PATCH PANEL
 CUSTOMER DRAWING

ITEM REVISION NAME
M02479IY/01
 DATASET FILE NAME
M02479IY_DC235/01A



UNLESS OTHERWISE SPECIFIED, DIMENSIONAL TOLERANCES ARE: IN [mm]
 .x ± .03 [.8]
 .xxx ± .010 [.3]
 ANGLES ±
 THIRD ANGLE PROJECTION

MATERIAL:
SEE NOTE 2
 DRAWING NUMBER:
02479-235

REV	DATE	BY	CHK	APR	DESCRIPTION	ECN
2	10-1-18	BAME	KRKE	MMR	B. ADDED P/N DPA246X88TGWH; C. REMOVED M6 SCREWS	M09000HW
1	5-30-14	MDJR	REFR	MMR	A. UPDATED TITLE BLOCK.	02479-235
R	3-04-06	LZ	CEF	CEF	RELEASED TO PRODUCTION	02479-235

DRAWN BY	DATE	CHK	SCALE	SHT 1 OF 1	SIZE
LZ	3-04-06	CEF	.25-1	SHT 1 OF 1	A

D101000DA/14