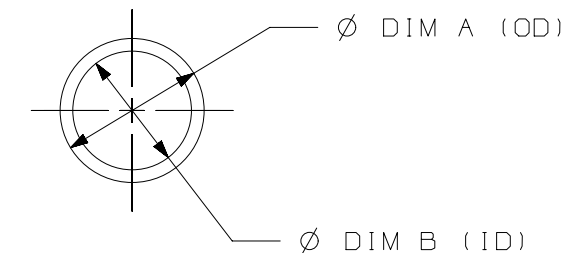
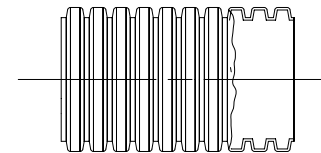


PANDUIT P/N	DIM A TARGET (OD) TOL. ±0.008 [±0.20]	DIM B TARGET (ID) TOL. ±0.008 [±0.20]	WALL THICKNESS	ROLL LENGTH (FT)	NUMBER OF ROLLS PER PACKAGE	TOTAL FEET PER PACKAGE TOL. +/-3%
CLT25NFRUV-3	0.393 [10.00]	0.255 [6.50]	0.058-0.074 [1.47-1.87]	984.20	3	2952 [900]
CLT38NFRUV-3	0.511 [13.00]	0.393 [10.00]	0.051-0.067 [1.29-1.70]	590.55	3	1771 [540]
CLT50NFRUV-3	0.622 [15.80]	0.472 [12.00]	0.066-0.082 [1.67-2.08]	524.93	2	1050 [320]
CLT62NFRUV-3	0.834 [21.20]	0.669 [17.00]	0.074-0.090 [1.87-2.28]	328.08	2	656 [200]
CLT75NFRUV-3	0.984 [25.00]	0.787 [20.00]	0.090-0.106 [2.28-2.69]	193.57	2	387 [118]
CLT100NFRUV-3	1.358 [34.50]	1.141 [29.00]	0.100-0.116 [2.54-2.94]	91.86	2	184 [56]
CLT125NFRUV-3	1.673 [42.50]	1.417 [36.00]	0.119-0.135 [3.02-3.42]	52.49	2	105 [32]
CLT150NFRUV-3	2.145 [54.50]	1.889 [48.00]	0.119-0.135 [3.02-3.42]	41.01	2	85 [25]

NOTES:

- VISIT OUR ON-LINE CATALOG AT WWW.PANDUIT.COM FOR A LIST OF CURRENT PARTS APPLICABLE FOR USE WITH THIS PRODUCT.
- DIMENSIONS IN [] ARE METRIC.
- ALL MATERIALS AND COMPONENTS USED MEET THE MATERIAL RESTRICTIONS OF RoHS (EUROPEAN DIRECTIVE 2011/65/EU ON THE RESTRICTION OF HAZARDOUS SUBSTANCES) AS PROPOSED BY THE RoHS TECHNICAL ADAPTATION COMMITTEE.
- ALL PART NUMBERS HAVE ONE CONTINUOUS SLIT ALONG THE ENTIRE LENGTH OF TUBING.
- PRODUCT HAS A FLAMMABILITY RATING OF UL94-V2.



REV	DATE	BY	CHK	APR	DESCRIPTION	ECN
00	2/5/24	JEFP	DJW	MSAD	INITIAL RELEASE	GAECN07026

PART NUMBER		SEE TABLE	
TITLE			
ELECTRIC VEHICLE FIRE RETARDENT UV RESISTANT CORRUGATED LOOM TUBING			
CUSTOMER DRAWING			
ITEM REVISION NAME		01300EBC/00	
DATASET FILE NAME		01300EBC_DC/00A	
UNLESS OTHERWISE SPECIFIED, DIMENSIONAL TOLERANCES ARE: IN [mm]			
.x ± .1 [2.54] .xxx ± .005 [.127] .xx ± .01 [.25] ANGLES ± 1°			
DRAWN BY		DATE	
JEFP		2/5/24	
CHK		SCALE	
DJW		NTS	
DRAWING NUMBER:		SHT 1 OF 1	
01300EBC-DC		B	

B

B

A

A

NXGLOBAL_BSIZE