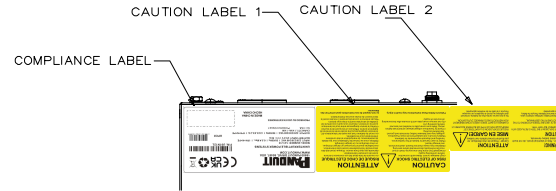
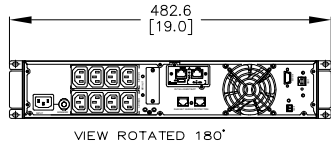
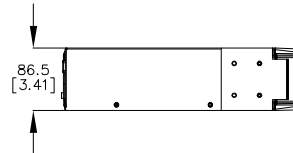
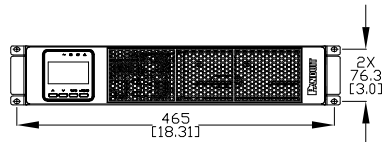
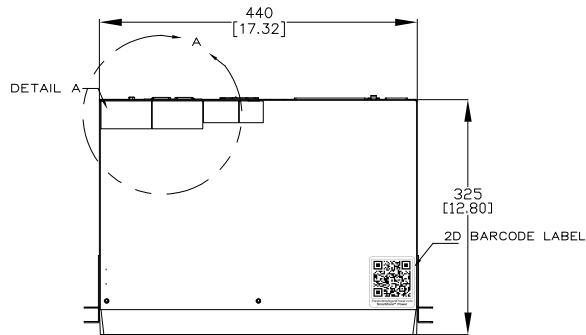


THIS COPY IS PROVIDED ON A RESTRICTED BASIS AND IS NOT TO BE USED IN ANY WAY DETRIMENTAL TO THE INTERESTS OF PANDUIT CORP.



DETAIL A
SCALE 1:3



SPECIFICATION:

1. STANDARD:
- | | |
|-------------------------|----------------------------------|
| UPS TOPOLOGY: | DOUBLE CONVERSION |
| KVA: | 1 |
| BATTERY TYPE: | LITHIUM-ION |
| INPUT PLUG: | SCHUKO CEE 7/EU1-16P AND BS1363A |
| NOMINAL INPUT VOLTAGE: | 220/230/240VAC |
| INPUT PHASE: | SINGLE |
| OUTPUT PHASE: | SINGLE |
| NOMINAL OUTPUT VOLTAGE: | 220/230/240VAC |
| OUTLET TYPE AND QTY: | IEC-C13(8) SOCKET |
| DISPLAY TYPE: | 2.8 INCH, 4 BUTTON |
| PARALLEL PORT SUPPORT: | NO |
| INPUT BREAKER TYPE: | 16A PUSH BUTTON |
| OUTPUT BREAKER TYPE: | N/A |
2. ADDITIONAL:
NONE
3. ACCESSORY COMPONENTS:
P/N U01N12L CONTAINS AN INTELLIGENT NETWORK CARD,(INSTALLED)
STABILIZER BRACKET, QTY:(4)
INSTALLATION EARS, QTY:(2)
SAFETY WARNING SHEET,QTY:(1)
SELECTION GUIDE(POCKET GUIDE),QTY:(1)
DB9/DB9 RS232 1.5M COMMUNICATION CABLE, QTY:(1)
USB-A/USB-B 1.2M SERIAL COMMUNICATION CABLE, QTY:(1)
INCLUDES P/N:ULCO24 INTERNAL BATTERY CARTRIDGE, QTY (1),(INSTALLED)
INCLUDES P/N:URMKIT2 INSTALLATION RAIL KIT, QTY (1),(U01N12L ONLY)
REFER TO ASSOCIATED DRAWINGS FOR PHYSICAL DIMENSIONS AND SPECIFICATIONS
EPO PLUG WITH SHORTING WIRE,QTY:(1),(INSTALLED)

NOTES:

1. PRIMARY DIMENSIONS ARE IN MILLIMETERS. SECONDARY DIMENSIONS ARE IN INCHES.
2. INSTALLATION SHALL COMPLY WITH ALL APPLICABLE NATIONAL, STATE, AND LOCAL CODES.
3. VISIT OUR ON-LINE CATALOG AT WWW.PANDUIT.COM FOR A CURRENT LIST OF PRODUCTS APPLICABLE FOR USE WITH THIS PRODUCT.
4. ALL PURCHASED ITEMS CONFORM TO C2-0834 PANDUIT SPECIFICATION FOR CHEMICAL SUBSTANCES TO BE CONTROLLED IN PRODUCT AND PACKAGING.

IDENTIFICATION:

PART NUMBER	DESCRIPTION	SHIPPING WEIGHT (KG)
U01S12L	SMARTZONE UPS, 1kVA, 2U, 230V, SINGLE PHASE, LITHIUM-ION POWER PROTECTION	13.2
U01N12L	SMARTZONE UPS, 1kVA, 2U, 230V, SINGLE PHASE, LITHIUM-ION POWER PROTECTION WITH INTELLIGENT NETWORK CARD	16.5

REV	DATE	BY	CHK	APR	DESCRIPTION	ECN	DATE	BY	CHK	APR	DESCRIPTION	ECN	DATE	BY	CHK	APR	DESCRIPTION	ECN	
00A	01/29	WL	ZRZ	GLM/DJB	RELEASE TO PRODUCTION	U01N12L													
01A	08/01	LS	ZRZ	GLM/DJB	A-UPDATED DESCRIPTION B-KIT WAS URMKIT 1 C-NOTCH REMOVED IN METAL	U01N12L													

THIS DRAWING IS THE PROPERTY OF PANDUIT CORP. IT IS TO BE USED FOR THE CLIENT'S USE ONLY. IT IS NOT TO BE REPRODUCED, COPIED, OR TRANSMITTED IN ANY FORM OR BY ANY MEANS, ELECTRONIC OR MECHANICAL, WITHOUT THE WRITTEN PERMISSION OF PANDUIT CORP.	
FILE: U01S12L/U01N12L-DC	TITLE: SMARTZONE UPS U01S12L/U01N12L CONTROL DRAWING
PART NUMBER: U01S12L/U01N12L-01	DRAWING NUMBER: U01S12L/U01N12L-DA/01A
DIMENSIONAL TOLERANCES ARE IN (IN)	DIMENSIONAL TOLERANCES ARE IN (MM)
N/A	N/A
U01N12L-DC	U01N12L-DC
12/11/2022	12/11/2022
M.D.	M.D.
VARIOUS	VARIOUS
SHT 1 OF 2	SHT 1 OF 2

THIS COPY IS PROVIDED ON A RESTRICTED BASIS AND IS NOT TO BE USED IN ANY WAY DETRIMENTAL TO THE INTERESTS OF PANDUIT CORP.

PANDUIT

18900 PANDUIT DRIVE, 60487, USA
WWW.PANDUIT.COM

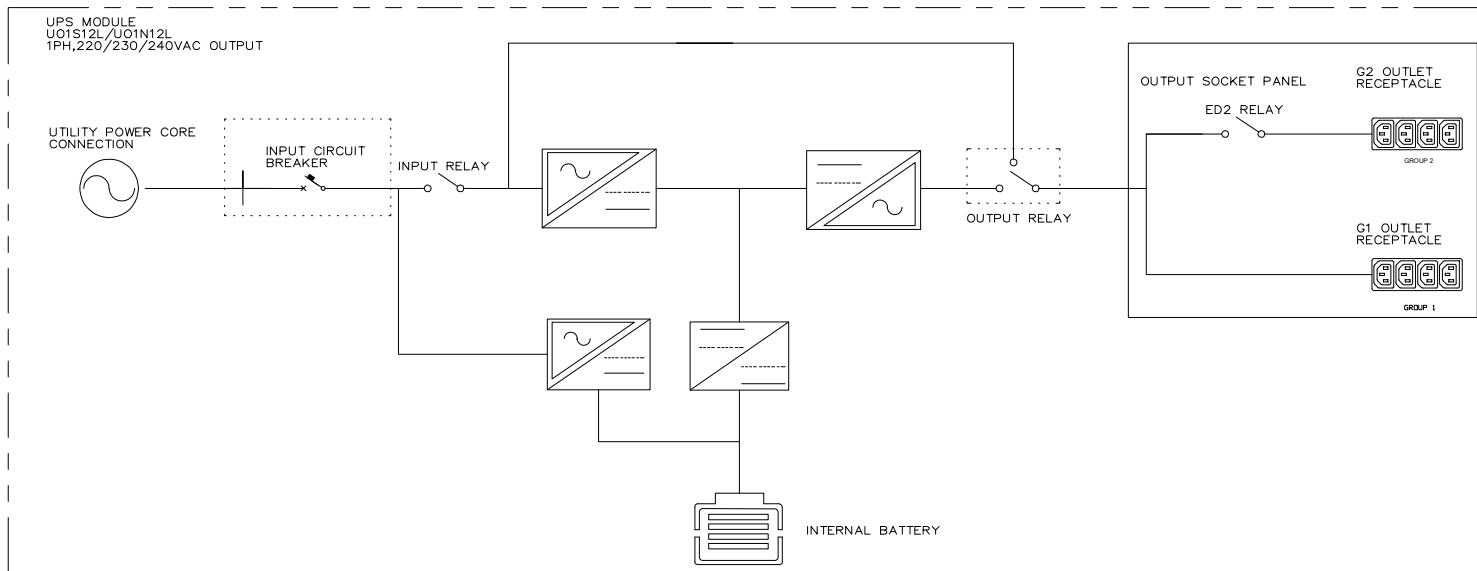
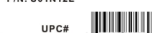
UNINTERRUPTIBLE POWER SYSTEMS

MODEL NUMBER: 1A1L1E
INPUT: 220/230/240 VAC | 50/60Hz | 6.0 A Max. | 1PH+N+PE
BATTERY INPUT: 25.6 V \pm 0.5 V

OUTPUT: 220/230/240 VAC | 50/60Hz | 4.6/4.4/4.2 A | 1PH+N+PE
CAPACITY: 1 kVA, 1 kW
ICC: 3 kA Protective Class:1

PROHIBIDO SU USO EN EXTERIORES

MADE IN CHINA
HECHO CHINA



CORE FIRMWARE PART NUMBER : 3040-6560
CORE FIRMWARE VERSION: V0118000000

LEGEND			
	DESCRIPTION		DESCRIPTION
	DESCRIPTION		DESCRIPTION
	DESCRIPTION		DESCRIPTION

REV	DATE	BY	CHK	APR	DESCRIPTION	ECN	DATE BY	TEAM	DATE	W/D	SCALE	PROJ	REV
01A	01/23	WL	ZRZ	GLM/DJB	A. UPDATED DESCRIPTION B. KIT WAS URMKIT 1 C. SWITCH REMOVED IN METAL	U01N12L							
00A	01/23	WL	ZRZ	GLM/DJB	RELEASE TO PRODUCTION	U01N12L							

PROJECT NO:	SPS-EDI-571	PROJECT SPO:	
REV. TABLE	SEE TABLE	DATE: 01/11/2022	
REV. NO:	01	REV. DATE:	01/11/2022
FILE:	SMARTZONE UPS U01S12L/U01N12L CONTROL DRAWING	REV. DATE:	01/11/2022
REV. NO:	U01S12L/U01N12L/01	REV. DATE:	01/11/2022
REV. NO:	U01S12L/U01N12L-DA/01A	REV. DATE:	01/11/2022
REV. NO:	U01S12L/U01N12L-DC	REV. DATE:	01/11/2022
REV. NO:	U01S12L/U01N12L-DA/01A	REV. DATE:	01/11/2022
REV. NO:	U01S12L/U01N12L-DC	REV. DATE:	01/11/2022



N/A

U01N12L-DC

SHT 1 OF 2