

# Data Center Connectivity Guide – APAC

## WHAT APPLICATIONS WILL YOU BE RUNNING?

- 10/25/50GBASE-SR
- 40/100GBASE-SR4
- 40/100 Gb BiDi
- 16/32/64/128GB Fibre Channel
- 40/100GBASE-LR4
- 10GBASE-LR
- 40GBASE-FR, 100GBASE-LR1, 100GBASE-FR

## WHAT FIBER TYPE ARE YOU LOOKING FOR?

### Multimode

- OM3 50/125µm
- OM4 50/125µm
- OM4+ 50/125µm (Signature Core™ Fiber Optic Cabling System)
- OM5+ 50/125µm (Signature Core™ Fiber Optic Cabling System)

### Singlemode

- OS2 9/125µm

## WHAT POLARITY METHOD WILL YOU DEPLOY?

- Method A
- Method B
- Universal

Solutions represented throughout this guide apply to the most common configurations only.

Other configurations available.

Contact Panduit Customer Service for details at: 800-777-3300.

## WHAT LEVEL OF PERFORMANCE ARE YOU LOOKING FOR IN YOUR CABLE ASSEMBLIES?

### Maximum Insertion Loss (per mated pair)

- Standard Singlemode MPO .75dB
- Standard Singlemode LC .35dB
- Optimized Multimode MPO .35dB
- Optimized Multimode LC .15dB
- Ultra Multimode MPO .25dB
- Ultra Multimode LC .10dB

## WHAT WILL YOUR LINK/CHANNEL LOOK LIKE?

- Longest length?
- How many cassettes or FAP's?
- Will there be a cross connect? How many?
- How many patch cords will each link require?
- How long are your patch cords?

## WHAT FIBER DENSITY ARE YOU LOOKING FOR?

- HD Flex™ Fiber Cabling System 144 LC Fibers Per 1 RU, available in 1 RU, 2 RU, and 4 RU
- QuickNet™ SFQ System 96 Fibers Per 1 RU
- Opticom® Fiber System 96 Fibers Per 1 RU, available in 1 RU, 2 RU (192 Fibers), and 4 RU (288 Fibers)

## KEY SYSTEM FEATURES:

### HD Flex™ Fiber Cabling System

- Highest port density, maximizes real estate usage

### QuickNet™ SFQ System

- Accepts copper and fiber, mounts in panel without an enclosure

### Opticom® Fiber System

- Traditional cassette design, most available connector spacing

# Reach Table

Reach Table				
Application	Connectivity Budget (db) 1.5* Fiber Category			
	OM3	OM4	OM4+ Signature Core™	OM5
	Maximum Channel Length (Meters)			
10 Gb/s Ethernet (10GBASE-SR)	300	400	550	400
25 Gb/s Ethernet (25GBASE-SR)	90	125	160	125
50 Gb/s Ethernet (50GBASE-SR)	70	100	130	100
16G Fibre Channel (FC, SAN)	100	125	200	125
32G Fibre Channel (FC, SAN)	70	100	125	100
64G Fibre Channel (Duplex**) (FC, SAN)	70	100	125	100
128G Fibre Channel (FC, SAN)	60	85	95	85
Cisco® 40G BiDi	100	135	200	150
Cisco® 100G BiDi	70	100	150	130
40 Gb/s Ethernet (4x10) (40GBASE-SR4)	100	125	165	125
100 Gb/s Ethernet (4x25) (100GBASE-SR4)	70	100	125	100
40 Gb/s Ethernet (40G SWDM4)	240	350	440	440
100 Gb/s Ethernet (100G SWDM4)	75	100	150	150

\* 2 Mated Connector Pairs @ .75dB/ea - 1.5dB

\*\* For 64GB Fibre Channel parallel versions, use 16G FC reach limits  
Cisco® is a registered trademark of Cisco Technology, Inc.

## Fiber Standards

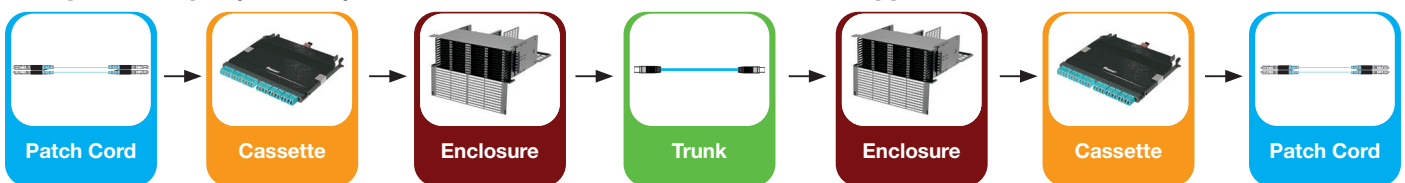
Panduit® Laser-Optimized OM3, OM4 multimode fibers meet domestic and international standards. Signature Core™ Fiber Optic Cabling System exceeds domestic and international standards for optical fiber. This includes TIA-492AAAB, TIA-492AAAC, TIA-492AAAD and IEC 60793-2-10 and supports a diverse set of legacy and contemporary applications including Ethernet, Fibre Channel, Infiniband, and FICON (Fiber Connection), among others.

All trademarks, service marks, trade names, product names, and logos appearing in this document are the property of their respective owners.  
[View the Link Loss Calculator.](#)

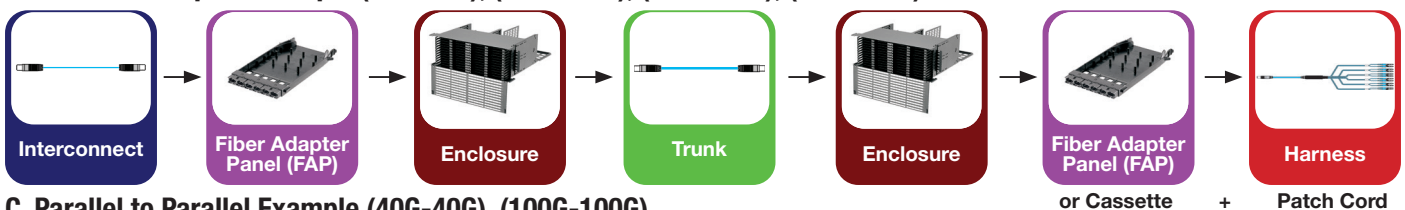
## Connectivity Solution

1. Choose your connectivity application solution (A, B, or C) below.
2. Build your chosen solution from components on pages 3, 4, and 5.

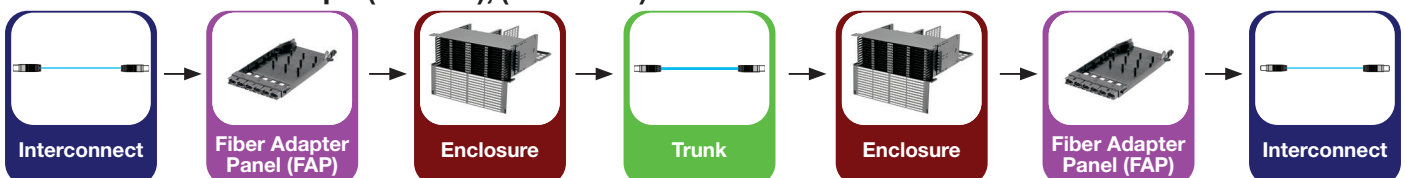
### A. Duplex Example (10G-10G), 40G BiDi, 4, 8, 16, 32G Fibre Channel SAN App



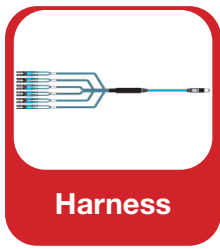
### B. Parallel to Duplex Example (40G-10G), (100G-10G), (100G-40G), (128G-32G)



### C. Parallel to Parallel Example (40G-40G), (100G-100G)



# Harnesses/Patch Cords - Choose Your Harness & Patch Cords



Harnesses*	12 Fiber Plenum, Female PanMPO™ Connector to LC (Push-Pull or Uniboot) (24" equal breakout)
Part Number	Description
FZTRL7NQSONM003	OM4 Female PanMPO™ Connector to LC Push-Pull Optimized IL - 3 meters
FZTRL7NUSONM003	OM4 Female PanMPO™ Connector to LC Uniboot Optimized IL - 3 meters
FXTRL7NQSONM003	OM3 Female PanMPO™ Connector to LC Push-Pull Optimized IL - 3 meters
FXTRL7NUSONM003	OM3 Female PanMPO™ Connector to LC Uniboot Optimized IL - 3 meters
F9TRL5NQSSNM003	OS2 Female MPO to LC Push-Pull, Standard IL - 3 meters

Harnesses*	8 Fiber Plenum, 4 to 1 Conversion Harnesses, Female PanMPO™ Connector to LC (Push-Pull/Uniboot) (24" equal breakout)
Part Number	Description
FZ8RL7NQSVNM003	OM4 Female PanMPO™ Connector to LC Push-Pull Optimized IL - 3 meters
FZ8RL7NUSVNM003	OM4 Female PanMPO™ Connector to LC Uniboot Optimized IL - 3 meters
FX8RL7NQSVNM003	OM3 Female PanMPO™ Connector to LC Push-Pull Optimized IL - 3 meters
FX8RL7NUSVNM003	OM3 Female PanMPO™ Connector to LC Uniboot Optimized IL - 3 meters
F98RL5NQSQNM003	OS2 Female MPO to LC Push-Pull, Standard IL - 3 meters

\*For male PanMPO™ Connector, change "7" in position 6 to "8"

For male MPO, change "5" in position 6 to "6"

\*\*To change from LC Push-Pull to Uniboot connector, change the "Q" in position 8 to a "U"

Available in lengths from 1 – 10m



Patch Cords	2-Fiber 2mm Patch Cord, LSZH*, LC – LC Uniboot
Part Number	Description
F92TLUCUCONM***	OS2, 2-fiber, LSZH QuickNet™ Uniboot Push-Pull LC-LC, Optimized IL
FZ2TLUCUCONM***	OM4, 2-fiber, LSZH QuickNet™ Uniboot Push-Pull LC-LC, Optimized IL
FS2RLU1U1NNM****	Signature Core™, 2-fiber, LSZH, LC Uniboot-LC Uniboot, Ultra-Low IL
FZ2RLU1U1NNM****	OM4, 2-fiber, LSZH, LC Uniboot-LC Uniboot, Optimized IL
F92RLU1U1ONM***	OS2, 2-fiber, LSZH, PanNet® Uniboot Push-Pull LC-LC, Optimized IL
F92RLU2U2ONM***	OS2, 2-fiber, LSZH, Uniboot Push-Pull APC LC-APC LC, Optimized IL
FZ2ELLNLNSNM***	OM4, 2-fiber, LSZH, LC-LC, Standard IL
F92ELLNLNSNM***	OS2, 2-fiber, LSZH, LC-LC, Standard IL

\*\*\*Available from 001 to 050m, in 1m increments

# Cassettes - Choose Your System Solution



Cassette

## HD Flex™ Fiber Cabling System

- Has the capacity to do 144 LC Fibers in 1 RU, 288 Fibers in 2 RU, and 576 in 4 RU
- Maximizes real estate usage

HD Flex™ Fiber Cabling System			
Part Number	Description	Part Number	Description
<b>HD Flex™ 12 Fiber Cassette MPO to LC Duplex</b>		<b>HD Flex™ Cassette (2) 12F MPO to 12 LC Duplex</b>	
FHCZO-12-10U	OM4, Universal Polarity, Optimized IL	FHCZO-24-10U	OM4, Universal Polarity, Optimized IL
FHCXO-12-10U	OM3, Universal Polarity, Optimized IL	FHCXO-24-10U	OM3, Universal Polarity, Optimized IL
FHC9N-12-10AS	OS2, Method A, Standard IL	FHC9N-24-10AS	OS2, Method A, Standard IL
FHC9N-12-10AF	OS2, Method A, pair flipped, Standard IL	FHC9N-24-10AF	OS2, Method A, pair flipped, Standard IL
<b>HD Flex™ 4 to 1 Conversion Cassette; 1 MPO to 4 LC Duplex (parallel to duplex optics)</b>		<b>HD Flex™ Cassette (1) 24F MPO to 12 LC Duplex</b>	
FHC3ZO-08-10BN	OM4, Method B, Optimized IL	FHCZO-24F-10AS	OM4, Method A, Universal, Optimized IL
FHC3XO-08-10BN	OM3, Method B, Optimized IL	FHCXO-24F-10AS	OM3, Method A, Universal, Optimized IL
FHC39N-08-10AN	OS2, Method A, Standard IL	FHC9N-24F-10AS	OS2, Method A, Universal, Standard IL
<b>HD Flex™ LC Splice Cassette, 6 LC Duplex, Preloaded with Fiber</b>			
FHSZO-12-10P*	OM4, Optimized IL		
FHSXO-12-10P*	OM3, Optimized IL		
FHS9N-12-10P*	OS2, Standard IL		

\*Change "P" for Pigtailed to "R" for Ribbon Fiber



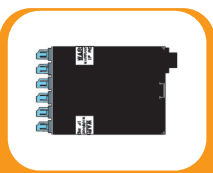
Cassette

## QuickNet™ SFQ System

- Has the ability to do 96 Fibers in 1 RU
  - Has no enclosures in its solution
  - Has the ability to do both Fiber and copper in the same patch panel
- See copper on the back page.

QuickNet™ SFQ System			
Part Number	Description	Part Number	Description
<b>QuickNet™ SFQ 12 Fiber Cassette; MPO to LC Duplex</b>		<b>QuickNet™ SFQ 4 to 1 Conversion Cassette; 1 MPO to 4 LC Duplex (parallel to duplex optics)</b>	
FQZO-12-10U	OM4, Method B, Universal, Optimized IL	FQ3ZO-08-10B	OM4, Optimized IL
FQXO-12-10U	OM3, Method B, Universal, Optimized IL	FQ3XO-08-10B	OM3, Optimized IL
FQ9N-12-10AS	OS2, Method A, Standard IL	FQ39N-08-10A	OS2, Optimized IL
FQ9N-12-10AF	OS2, Method A, pair flipped, Standard IL		

Opticom™ Fiber System			
Part Number	Description	Part Number	Description
<b>Opticom® 12 Fiber, MPO to LC Duplex</b>		<b>Opticom® 24 Fiber, (2) 12F MPO to LC Duplex</b>	
FC2ZO-12-10U	OM4, Method B, Universal Polarity, Optimized IL	FC2ZO-24-10U	OM4, Method B, Universal Polarity, Optimized IL
FC2ZO-12-10U	OM3, Method B, Universal Polarity, Optimized IL	FC2XO-24-10U	OM4, Method A, pair flipped, Optimized IL
FC29N-12-10AS	OS2, Method A, Standard IL	FC29N-24-10AS	OM3, Method A, Optimized IL
FC29N-12-10AF	OS2, Method A, pair flipped, Standard IL	FC29N-24-10AF	OM4, Method B-B2 (1-12 array), Optimized IL
<b>Opticom® 4 to 1 Conversion Cassette; 2 MPO to 8 LC Duplex (parallel to duplex optics)</b>			
FC3ZO-16-10B	OM4, Method B, Optimized IL		
FC3XO-16-10B	OM3, Method B, Optimized IL		



Cassette

## Opticom® Fiber System

- Has the ability to do 96 Fibers in 1 RU, 192 Fibers in 2 RU, and 288 Fibers in 4 RU
- Allows the user to have more space to work with

Splice Cassettes*			
Part Number	Description	Part Number	Description
<b>Opticom® LC Splice Cassette, 6 LC Duplex, Preloaded with Fiber</b>		<b>Opticom® SC Splice Cassette, 6 SC Duplex, Preloaded with Fiber</b>	
FCSZO-12-10P*	OM4, Optimized IL	FCSZO-12-03P*	OM4, Optimized IL
FCS9N-12-10P*	OS2, Standard IL	FCS9N-12-SAP*	OS2, SC/APC, Standard IL
FCS9N-12-LAP*	OS2, LC/APC, Standard IL		

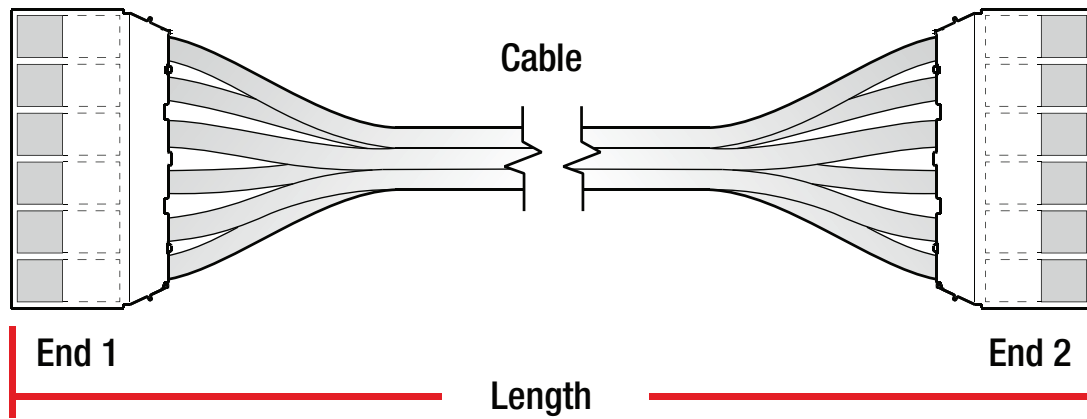
\*Change "P" for Pigtailed to "R" for Ribbon Fiber

# QuickNet™ Copper Trunks

► Configure Copper QuickNet™ part numbers in our online tool

## Selection Guide for QuickNet™ Cable Assembly Semi-Custom Part Numbers

Example: QCLBCCB001M003 – QuickNet™ Cable Assembly, Category 6 LSZH, Blue Cable, UTP, Cassette to Cassette, 3m



UTP Cassette



UTP Jack Modules



UTP Modular Plugs



Unterminated

	Part Number Series	Copper QuickNet™ Trunk Assembly Descriptions
Category 6 LSZH	QCLBCCB0001M***	Category 6 UTP, LSZH, Blue cable, cassette to cassette, Black jacks, *** meters
	QCLBCJB0001M***	Category 6 UTP, LSZH, Blue cable, cassette to jacks, Black jacks, *** meters
	QCLBCPB0001M***	Category 6 UTP, LSZH, Blue cable, cassette to plug, Black jacks, *** meters
	QCLBCUB0001M***	Category 6 UTP, LSZH, Blue cable, cassette to unterminated, Black jacks, *** meters
Category 6A LSZH	QZLBCCB0001M***	Category 6A Vari-MaTriX UTP, LSZH, Blue cable, cassette to cassette, Black jacks, *** meters
	QZLBCJB0001M***	Category 6A Vari-MaTriX UTP, LSZH, Blue cable, cassette to jack, Black jacks, *** meters
	QZLBCPB0001M***	Category 6A Vari-MaTriX UTP, LSZH, Blue cable, cassette to plug, Black jacks, *** meters
	QZLBCUB0001M***	Category 6A Vari-MaTriX UTP, LSZH, Blue cable, cassette to unterminated, Black jacks, *** meters

\*\*\* = Length in meters from 003 to 090

Note: Part numbers created in Panduit Configure-Price-Quote (CPQ) system.

# Fiber Adapter Panels (FAPs)



HD Flex™ Fiber Cabling System	
Part Number	Description
<b>HD Flex™ LC FAP with 6 LC Duplex Adapters</b>	
FHSXN-12-10N	Multimode adapters, Aqua, zirconia sleeves (LC Pigtailed not included)
FHS9N-12-10N	Singlemode adapters, Blue, zirconia sleeves (LC Pigtailed not included)
<b>HD Flex™ MPO FAP Cassettes</b>	
FHMP-6-ABL	6 MPO adapters, Black, Method A
FHMP-6-BCG	6 MPO adapters, Charcoal Gray, Method B
FHMP-6-ARD	6 MPO adapters, Red, 24F MPO, Method A



QuickNet™ SFQ System	
Part Number	Description
<b>QuickNet™ SFQ MPO FAPs with 6 MPO Adapters</b>	
FQMAP45BL	4 MPO adapters, Black, Method A
FQMAP65BL	6 MPO adapters, Black, Method A
FQMAP85BL	8 MPO adapters, Black, Method A
FQMAP46CG	4 MPO adapters, Charcoal Gray, Method B
FQMAP66CG	6 MPO adapters, Charcoal Gray, Method B
FQMAP86CG	8 MPO adapters, Charcoal Gray, Method B
FQMAP45RD	4 MPO adapters, Red, 24F MPO, Method A
FQMAP65RD	6 MPO adapters, Red, 24F MPO, Method A
FQMAP85RD	8 MPO adapters, Red, 24F MPO, Method A



Opticom® Fiber System	
Part Number	Description
<b>Opticom® MPO FAPs with 6 MPO Adapters</b>	
FAPH**12BLMPO	FAP with ** MPO adapters, Black, Method A, horizontal
FAPV**12BLMPO	FAP with ** MPO adapters, Black, Method A, vertical
FAPH**12CGMPO	FAP with ** MPO adapters, Charcoal Gray, Method B
FAPH**24RDMPO	FAP with ** MPO adapters, Red, 24F MPO, Method A

\*\*Insert 06, 12, or 18 for the number of MPOs required, ex: FAPH1212BLMPO



Part Number	Description
<b>Opticom® LC Duplex FAPs</b>	
FAP6WAQDLCZ	6 Multimode adapters, Aqua, zirconia split sleeves
FAP12WAQDLCZ	12 Multimode adapters, Aqua, zirconia split sleeves
FAP6WBUDLCZ	6 Singlemode adapters, Blue, zirconia split sleeves
FAP12WBUDLCZ	12 Singlemode adapters, Blue, zirconia split sleeves
FAP6WAGDLCZ	6 Singlemode LC/APC adapters, Green, zirconia split sleeves
FAP12WAGDLCZ	12 Singlemode LC/APC adapters, Green, zirconia split sleeves

# Enclosures/Panels



HD Flex™ Fiber Cabling System	
Part Number	Description
<b>Enclosures</b>	
FLEX*U06	*1, 2, or 4 RU, 6-Port HD Flex™ Enclosure
FLEX*U12	*1, 2, or 4 RU, 12-Port HD Flex™ Enclosure



Part Number	Description
<b>Panels</b>	
FLEX*UPN06	*1, 2, or 4 RU, 6-Port HD Flex™ Panel
FLEX*UPN12	*1, 2, or 4 RU, 12-Port HD Flex™ Panel



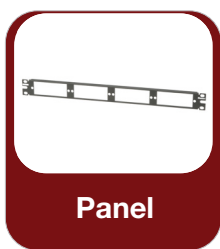
Part Number	Description
<b>Under Floor Enclosures</b>	
FLEX-ZRFE	HD Flex™ Zone Raised Floor Enclosure, Gray

Part Number	Description
<b>HD Fusion Enclosures</b>	
FRMHSS-4RU	4 RU, HD fusion splicing enclosure
FWMHSSGS-3456**	Wall mount splice enclosure, for up to 3456 ribbon fibers (Ribbon fibers not included)
FWMHSSGS-6912**	Wall mount splice enclosure, for up to 6912 ribbon fibers (Ribbon fibers not included)

\*Replace \*\* with 1, 2, or 4 to order the appropriate RU version (ex: FLEX1U06 is a 1 RU, 6-Port HD Flex™ Enclosure)  
 \*\*\*G' in HD Fusion Enclosure part number is Gray, replace G with B for Black, W for White  
 (ex: FWMHSSWS-3456 is a White enclosure)

QuickNet™ SFQ System	
Part Number	Description
<b>Enclosures</b>	
QAPP24BL	QuickNet™ Patch Panel, angled, 24-Port, 1 RU
QAPP48HDBL	QuickNet™ Patch Panel, angled, 48-Port, 1 RU
QPP24BL	QuickNet™ Patch Panel, flat, 24-Port, 1 RU

Opticom® Fiber System	
Part Number	Description
<b>Enclosures</b>	
FCE*U	Fiber cassette enclosure, * RU
FMT1	Rack mount fiber tray, 1 RU
FMT2	Rack mount fiber tray, 2 RU
FRME1U	Rack mount fiber enclosure, 1 RU for fusion splices



Part Number	Description
<b>Panels</b>	
CFAPPBL1	Fiber adapter panel, 1 RU, holds 4 FAP's
CFAPPBL2	Fiber adapter panel, 2 RU, holds 8 FAP's

\*Replace \*\* with 1, 2, or 4 to order the appropriate RU version (ex: FLEX1U06 is a 1 RU, 6-Port HD Flex™ Enclosure)  
 Note: \*1, 2, and 4 RU options.

# Enclosures/Panels

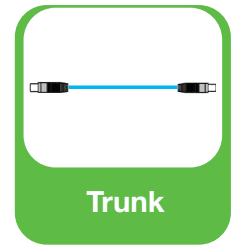


HD Flex™ Fiber Cabling System	
Part Number	Description
<b>Fiber Management Accessories</b>	
FLEX-PLATE*UR	HD Flex™ Enclosure Trunk Slack Plate with Rear Cover - *RU, Black
FLEX-PLATE*URW	HD Flex™ Enclosure Trunk Slack Plate with Rear Cover - *RU, White
FLEX-PLATE*UPR	HD Flex™ Patch Panel Trunk Slack Plate with Rear Cover - *RU, Black
FLEX-PLATE*UPRW	HD Flex™ Patch Panel Trunk Slack Plate with Rear Cover - *RU, White
FLEX-FCM*UA	HD Flex™ Front Cable Manager, *1, 2, or 4 RU
FLEX-0RUBR06	HD Flex™ Zero RU Bracket, 6-Port (Includes 1 FLEX-0RUUCH06)
FLEX-0RUUCH06	HD Flex™ Zero RU Bracket, 12-Port (Includes 1 FLEX-0RUUCH12)
FLEX-0RUBR12	HD Flex™ Zero RU Cassette Holder, 12-Port (For adding more cassettes to FLEX-0RUBR12)
FHSBBL06W	HD Flex™ Blanking Panel, 6-Port
FQCBRUA	QuickNet™ Zero RU Bracket, Holds 2 QuickNet™ Cassettes or Adapters
FEABRU	Opticom® Zero RU Bracket, Holds 1 Opticom® Cassette or FAP
QPPABL	QuickNet™ Patch Panel Adapter, accepts Mini-Com® Modules
QPPBBL	QuickNet™ Patch Panel Blank
FQCRCM	QuickNet™ Cassette Rear Cable Manager (2 post rack only)
FOSMF	Fiber optic splice module for FRME Rack mount enclosures
FSC24	Splice chip, 24 position
FST6	Fiber splice tray - 6" (152mm)
FSTK	Fiber splice tray - 6 mechanical or fusion splices
FST24	Fiber splice tray - 24 mechanical or fusion splices
FST48	HD Fusion splice tray kit
FST144R	Tray for ribbon fiber splicing
FOSMH1U	Fiber optic splice module handler, 1 RU
FOSMH4U	Fiber optic splice module handler, 4 RU
FSTHS	Fiber splice tray holder - used with FSTK
FMS1	Fiber management slack spool kit (2 per bag)
HLS-75R0	Hook & Loop roll, 75'L (22.9m), 0.75"W (19.1mm), Black

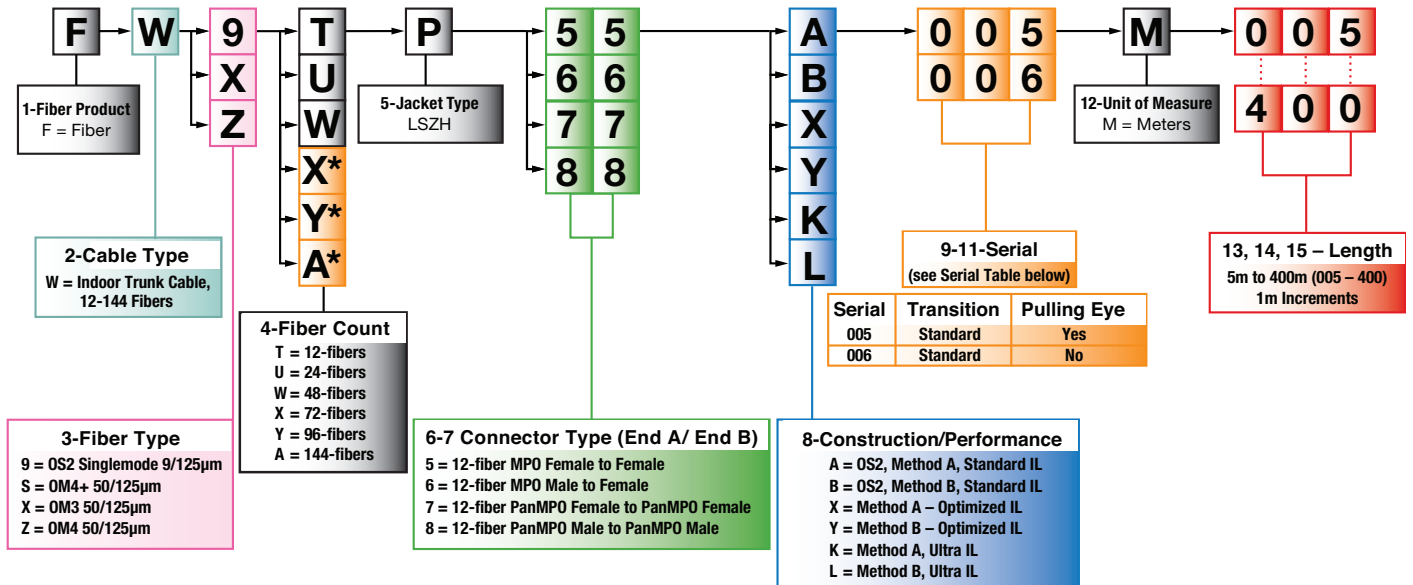
\*Replace \*\* with 1, 2, or 4 to order the appropriate RU version (ex: FLEX1U06 is a 1 RU, 6-Port, HD Flex™ Enclosure)



# Choose Your Trunk Trunks (Build Your Part Number Below)

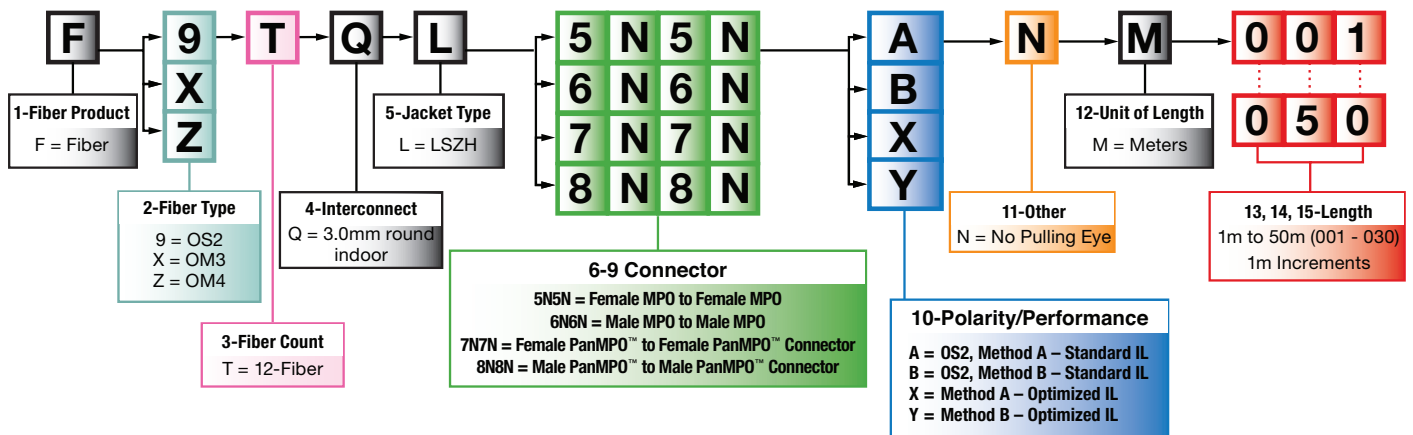
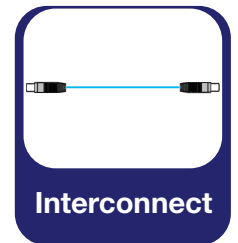


Configure Fiber Trunk part numbers in our online tool



Example: **FWZTL77Y005M030** — OM4 12-Fiber HD Flex™ Indoor Small Diameter Trunk, LSZH, 1x12F PanMPO™ Female with 1m breakout to 1 x 12F PanMPO™ Female with 1m breakout, Polarity B, Optimized IL, Pulling Eye End A, 30m.

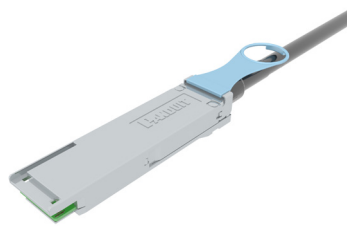
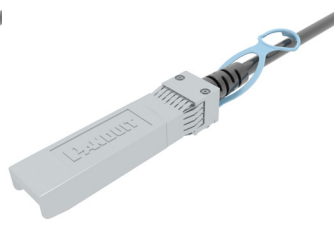
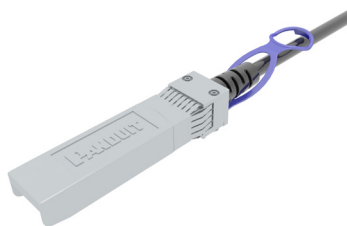
# Choose Your Interconnect Interconnects (Build Your Part Number Below)



Example: **FZTQL7N7NXNM001** — OM4 12-Fiber Interconnect, 3.0mm, LSZH, Female PanMPO™ Connector to Female PanMPO™ Connector, Method A, Optimized IL, No Pulling Eye, 1m.

# Direct Attach Copper (DAC) Cable Assemblies

10 GbE SFP+, 25 GbE SFP28, and 100 GbE QSFP28 copper cable assemblies Used at Access or Leaf layers, primarily Top of Rack architectures 100% production tested to exceed industry requirements



## Passive SFP+

PSF1PZA1MBL  
PSF1PZA2MBL  
PSF1PZA3MBL  
PSF1PZD4MBL  
PSF1PZD5MBL

## Passive SFP28

PSF2PZA1MBL  
PSF2PZA2MBL  
PSF2PZA3MBL  
PSF2PZC4MBL  
PSF2PZC5MBL

## Passive QSFP28

PQSF2PXA1MBL  
PQSF2PXA2MBL  
PQSF2PXA3MBL  
PQSF2PXC4MBL  
PQSF2PXC5MBL

## QSFP28 to (4) SFP28 Breakout Assemblies

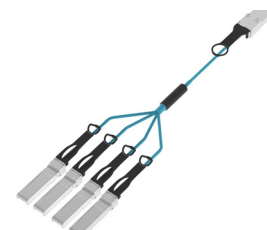
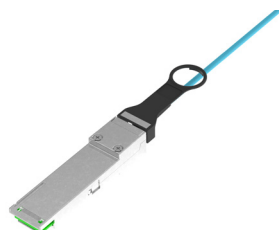
PHQ4SFP2A1MBL  
PHQ4SFP2A2MBL  
PHQ4SFP2A3MBL  
PHQ4SFP2C4MBL  
PHQ4SFP2C5MBL

- High speed solution, most cost-effective interconnect for Data Centers
- 10 GbE SFP+, 25 Gb SFP28, and 100 Gb QSFP28 copper cable assemblies
- Used at Access or Leaf layers, primarily Top of Rack architectures
- 100% production tested to exceed industry requirements

Note: Wire Gauge Guide: 'A' in part number = 30 AWG, 'C' = 26 AWG  
Note: BL (Black), BU (Blue), RD (Red), WH (White)

# Active Optical Cable Assembly

10 GbE SFP+, 25 GbE SFP28, 40 GbE QSFP+, and 100 GbE QSFP28 copper cable assemblies Used at Access or Leaf layers, primarily Top of Rack architectures 100% production tested to exceed industry requirements



## OM3 SFP+ to SFP+ 10 Gb/S

AX23NSPSPAQM001  
AX23NSPSPAQM\*\*\*

## OM3 SFP28 to SFP28 25 Gb/S

AX23NS2S2AQM001  
AX23NS2S2AQM\*\*\*

## OM3 QSFP+ to QSFP+ 40 Gb/S

AX83NQPPAQM001  
AX83NQPPAQM\*\*\*

## OM4 QSFP28 to QSFP28 100 Gb/S

AZ83NQ2Q2AQM001  
AZ83NQ2Q2AQM\*\*\*

## OM3 QSFP+ to SFP+ Breakout 40 Gb/S

AX23NS2S2AQM001  
AX23NS2S2AQM\*\*\*

## OM4 QSFP to SFP28 Breakout 100 Gb/S

AX83NQPPAQM001  
AX83NQPPAQM\*\*\*

Replace \*\*\* in the part number with length (0\*\*), see below note for available options.  
Example: 25m SFP+ part number is AX23NSPSPAQM025.  
Only available in Aqua jacket.

SFP+, SFP28, QSFP28, QSFP28 to SFP28 Breakout, QSFP+, QSFP+ to SFP+ Breakout available in the following lengths: 1, 2, 3, 5, 7, 10, 15, 20, 25, and 30m.

**PANDUIT**<sup>TM</sup>

Panduit Corp.  
World Headquarters  
Tinley Park, IL 60487  
800.777.3300  
www.panduit.com