

More Meaningful Connections



NetKey™ Cabling System – Asia Pacific

NetKey™ Cabling System

The NetKey™ Copper and Fiber Cabling System provides a complete, standards compliant cabling infrastructure solution for voice, data and video applications. NetKey™ Modules feature the universal “keystone” design and are compatible with a wide assortment of modular patch panels, faceplates, and surface mount boxes. When teamed with complementary Panduit products, the NetKey™ Solutions cover all your needs from the telecommunication room to the work area with the proven innovation and quality you depend on from Panduit.



NetKey™ Jack Modules, Copper Cable, and Patch Cords



Page 4

NetKey™ Modular Patch Panels



Pages 5 – 6

NetKey™ Faceplates, NetKey™ Stainless Steel Faceplates, and Faceplate Frames and Inserts



Pages 6 – 7



NetKey™ Audio/Video Modules and Inserts

Page 8



NetKey™ Furniture Faceplates and Surface Mount Boxes

Page 8



Shielded Keystone Jacks, Patch Panels, Outlets, Copper Patch Cords, and Copper Cable

Pages 9 – 10



Termination Tools

Page 10



Fiber Optic Cables, NetKey™ Fiber Optic Adapters, Enclosures, Patch Cords, and Pigtails

Pages 10 – 12



Racks, Cable Management, Accessories, and Cabinets

Pages 13 – 15

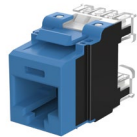


Power Distribution Units and Security Devices

Page 15

NetKey™ Category 6A, 6, and 5e Jack Modules

- Meet industry performance standards for Category 6A, 6, and 5e
- Punchdown Jack Modules are 100% performance tested and individually serialized for future traceability
- Keystone punchdown jacks meet ANSI/TIA-568.2-D and ISO 11801 component requirements
- Snap in and out of keystone openings for easy moves, adds, and changes
- Universal label includes T568A and T568B wiring schemes



NK6X88MBU



NK688MBU



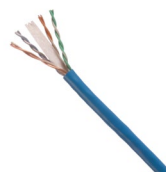
NK5E88MBUY

Part Number	Performance Level	Termination Style	Color
NK6X88MBU	Category 6A	Punchdown	Blue
NK6X88MBU-Q			
NK688MBU	Category 6		
NK688MBU-Q			
NKP5E88MBU	Category 5e		
NKP5E88MBU-Q			
NK5E88MBUY		Leadframe	

Termination tools can be found on page 10. Replace 'BU' with: AW (Arctic White), BL (Black), EI (Electric Ivory), GR (Green), IG (Int'l Grey), IW (International White), OR (Orange), RD (Red), VL (Violet), WH (White), YL (Yellow). Available color options may vary.

NetKey™ Category 6A, 6, and 5e Unshielded Copper Cable

- Small diameter allows for improved pathway capacity, tighter bend radius and increased flexibility and ease during installation
- Third party tested by an independent laboratory and complies with the electrical channel requirements of ANSI/TIA-568.2-D and ISO 11801
- Complies with IEEE 802.3af, IEEE 802.3at and IEEE 802.3bt for PoE applications



NUL6C04BU-FE



NUC5C04BU-CE

Part Number	Gauge (AWG)	Flammability Rating	Color
Category 6A U/UTP 4 Pair Copper Cable			
NUC6X04BU-FEG	23	CM	Blue
NUL6X04BU-VEG		LSZH (IEC 60332-1 and IEC 60332-3-22)	
Category 6 U/UTP 4 Pair Copper Cable			
NUC6C04BU-FE	24	CM	Blue
NUL6C04BU-FE		LSZH (IEC 60332-1 and IEC 60332-3-22)	
NUV6C04BU-VE		PVC	
Category 6 U/UTP 4 Pair Copper Cable - Reduced Diameter			
NUC6CR04BU-CE	24	CM	Blue
NUL6CR04BU-CE		LSZH (IEC 60332-1)	
Category 5e U/UTP Copper Cable			
NUC5C04BU-CE	24	CM	Blue
NUL5C04BU-CE		LSZH (IEC 60332-1)	

Available options may vary; please see panduit.com for details.

NetKey™ Category 6A, 6, and 5e U/UTP Copper Patch Cords

- Meet industry performance standards for Category 6A, 6, and 5e
- 100% performance tested
- Available in a variety of colors and lengths for design flexibility



NKU6PC1MBU



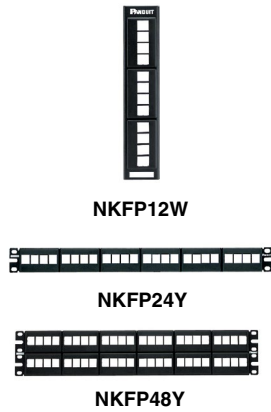
NKU6PC3MBU

Part Number	Performance Level	Length (m)	Color
NKU6APC3MBU	Category 6A	1-5, 7, 10	Blue
NKU6PC3MBU	Category 6		
NKU5EPC3MBU	Category 5e		

Replace '3' in the part number with the desired cord length (in meters). Replace 'BU' with: RD (Red) or leave blank for International White. Available length and color options may vary.

NetKey™ Modular, Flush Mount, and Punchdown Patch Panels

- Modular patch panels accept NetKey Modules, which snap in and out for easy moves, adds, and changes
- Angled style facilitates proper bend radius control and minimizes the need for horizontal cable managers
- Select modular patch panels have a front access design that includes faceplates with easy snap release feature



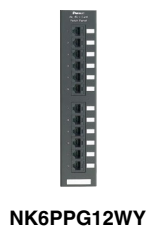
Part Number	Ports	No. of Rack Units	Identification
Modular Patch Panels			
NKFP12W	12	—	Adhesive
NKFP24Y	24	1	
NKFP48Y	48	2	
NKFP24Y	24	1	Label Pocket
NKFP48Y	48	2	
NKFP24Y	24	1	Adhesive
NKFP48Y	48	2	
NKFP24Y	24	1	Label Pocket



Part Number	Ports	No. of Rack Units	Color
Flush Mount Patch Panels			
NKPP24FMY	24	1	Black
NKPP48FMY	48	2	
NKPPA24FMY	24	1	
NKPPA48FMY	48	2	
NKPP48HDY	48	1	
NKPPA48HDY	48	1	White
NKPP24FMWH	24	1	
NKPP48FMWH	48	2	
NKPPA24FMWH	24	1	
NKPPA48FMWH	48	2	
NKPP48HDWH	48	1	
NKPPA48HDWH	48	1	



Part Number	Ports	No. of Rack Units	Color
Category 6A Punchdown Patch Panels			
NK6XPPG24Y	24	1	Black
NK6XPPG48Y	48	2	
NKA6XPPG24Y	24	1	
NKA6XPPG48Y	48	2	

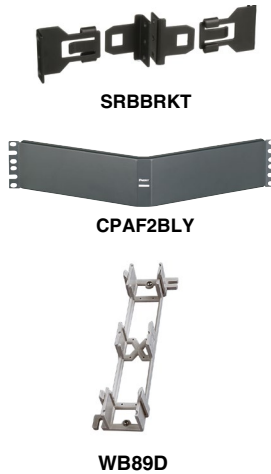


Part Number	Ports	No. of Rack Units	Color
Category 6 Punchdown Patch Panels			
NK6PPG24Y	24	1	Black
NK6PPG48Y	48	2	
NK6PPG12WY	12	—	
NKA6PPG24Y	24	1	
NKA6PPG48Y	48	2	

Part Number	Ports	No. of Rack Units	Color
Category 5e Punchdown Patch Panels			
NK5EPPG24Y	24	1	Black
NK5EPPG48Y	48	2	
NK5EPPG12WY	12	—	
NKA5EPPG24Y	24	1	
NKA5EPPG48Y	48	2	

Termination tools can be found on page 10.

NetKey™ Modular, Flush Mount, and Punchdown Patch Panels (continued)



Part Number	Type	Style	Color
Patch Panel Accessories			
SRB19BLY	Strain Relief Bar	Extended	Black
SRB19D5BL		Deep	
SRB19D7BL			
SRB19BLY	Mounting Bracket	Quick Release	
CPAF1BLY	Filler Panel	Angled	Black
CPAF2BLY			
CPATCBL	Transitional Cover		
WB89D	Bracket	89D	

NetKey™ Faceplates

- Accept all NetKey Modules
- Replacement label/label covers available for select products
- Non-label faceplates include screws with matching color head screws



Part Number	Ports	Style	Identification
NK1F**Y	1	Flat	Label Pocket
NK2F**Y	2		
NK4F**Y	4		
NK6F**Y	6		
NK8F**Y	8		
NK12F**Y	12		
NK4VSF**	4	Vertical, Sloped	Adhesive
NK2HSF**Y	2	Horizontal, Sloped	
NK4HSF**Y	4		
NK1FN**	1	Flat	
NK2FN**	2		
NK3FN**	3		
NK4FN**	4		
NKFPL86F1SAW^	1	Flat, Shuttered	Label Pocket
NKFPL86F2SAW^	2		
NKFPL86F4SAW^	4		
NKFPLUKF1SAW^^	1		
NKFPLUKF2SAW^^	2	Sloped	
NKFPLUKF4SAW^^	4		
NKUKS2AW	2		
NKUKS4AW-2G	4		
NKUKS2SAW	2	Sloped, Shuttered	
NKUKS4SAW-2G	4		

Replace ** with appropriate two-character color designation: BL (Black), EI (Electric Ivory), IG (International Gray), IW (International White), WH (White). Available options may vary.

^ - Supplied with M4.0-0.7x25mm panhead mounting screws.

^^ - Supplied with M3.5-0.5x30mm panhead mounting screws.

NetKey™ Stainless Steel Faceplates

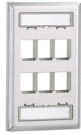
- Impact-resistant 304 stainless steel for light industrial environments



NKF2S



NKF4S



NKF6S

Part Number	Ports	Style	Identification
NKF2S	2	Flat	Label Pocket
NKF4S	4		
NKF6S	6		

NetKey™ Phone Faceplates



KWPY



KWP5EY
KWP6PY

Part Number	Ports	Style	Performance Level
KWPY	1	Accepts 1 NetKey Module	—
KWP6PY		Punchdown	Category 6
KWP5EY			Category 5e

Termination tools can be found on page 10. Compatible with wall mountable phones with short patch cord connections to the jack module.

NetKey™ Faceplate Inserts and Frames



NKHS2IW-X



NKHS2SIW-X



NKHF2MIW-X



CHB2MIW-X

Part Number	Ports	Style	Size
Inserts and Blank Modules			
NKHF2M**-X	2	Flat	1/3
NKHS2**-X		Sloped	1/2
NKHS2S**-X		Sloped, Shuttered	

Replace '**' with appropriate two-character color designation: AW (Arctic White), BL (Black), EI (Electric Ivory), IG (Int'l Grey), IW (Int'l White), WH (White). Available options may vary.

Part Number	Ports	Style	Size
NKFA1SAW-X	1	Flat, Shuttered	Label Pocket
NK6CSAW-X			
NK6CSSAW-X		Sloped, Shuttered	
NKFS2AW	2	Sloped	
NKFS2SAW		Sloped, Shuttered	

Frames

CBE**Y	Single Gang	Executive
CBE**-2GY	Double Gang	

Replace '**' with appropriate two-character color designation: AW (Arctic White), BL (Black), EI (Electric Ivory), IG (International Gray), IW (International White), WH (White). Available options may vary.

NetKey™ Audio/Visual Modules and Inserts



NKFIW



NK35MSSIW



NK35MSCIW



NKHDMIW



NKUSBAAIW



NKBBIW-X



CHD9CIWY



CHD15HDCIWY



CHD15HDSCIWY

Part Number	Description
Modules	
NKF**	Keystone F-type 3 Ghz coupler module.
NK35MSS**	Keystone 3.5mm (0.125") stereo solder type headset connector.
NK35MSC**	Keystone 3.5mm (0.125") stereo headset connector.
NKHDM**	Keystone HDMI 2.0 Type A female to female coupler module.
NKUSBAA**	Keystone USB 2.0 female A to female A coupler.
NKBM**-X	Blanks Out 1 Port.
Inserts	
CHD9C**Y	0.3" insert with 9-pin female to female coupler.
CHD15HDC**Y	0.3" insert with 15-pin female to female coupler (SVGA compatible).
CHD15HDSC**Y	0.3" insert with 15-pin HD screw-down DB connector mounted to printed circuit board (SVGA compatible).

For use with CBE**Y and CBE**-2GY frames.

NetKey™ Surface Mount Boxes

- Mount easily with supplied mounting screws, adhesive tape, or optional magnet
- Cable entry from side knockouts



NK2BXIW-A



NK4BXIW-AY



NK6BXIW-AY

Part Number	Ports	Style	Identification
NK2BX**-A	2	Elongated	Adhesive
NK4BX**-AY	4		Label Pocket
NK6BX**-AY	6	Elongated with Fiber Spool	Adhesive

Replace '**' with appropriate two-character color designation: AW (Arctic White), BL (Black), EI (Electric Ivory), IG (International Gray), IW (International White), WH (White). Available options may vary.

NetKey™ Furniture Faceplates

- Compatible with standard furniture opening



NK4MFABL

Part Number	Style	Color	Identification
NK4MF**	Flat	Black	Adhesive
NK4MFLBL			Label Pocket
NK4MFABL	Sloped		Adhesive

Replace '**' with appropriate two-character color designation: AW (Arctic White), BL (Black), EI (Electric Ivory), IG (International Gray), IW (International White), WH (White). Available options may vary.

Keystone Shielded Jacks



KJS6X88TC



KJS6X88TCBL



KJS6X88TCBU

Part Number	Performance Level	Termination Style	Color
KJS6X88TC	Category 6A	TG	Metal
KJS6X88TCBU			Blue
KJS6X88TCBL			Black

For use with Keystone Shielded Patch Panels and KFPL Keystone Outlets. May not work with some NetKey™ Outlets and Patch Panels.

Keystone Shielded Patch Panels



KPS24BL



KP24WSBL



KPA24WSBL



KP24APWSBL



KPA48WSBL

Part Number	Ports	RU	Identification
KPS24BL	24	1	Label Pocket
KP24WSBL			
KPA24WSBL			
KP24APWSBL			
KPA48WSBL	48	2	—

For use with Keystone Shielded Jacks only.

Keystone Shielded Outlets



KFPL80S2SWH



KFPL86S2SWH

Part Number	Ports	Style	Identification
KFPL80S2SWH	2	Sloped	Label Pocket
KFPL86S2SWH			

For use with Keystone Shielded Jacks only.

TX6A™ 10 Gig Shielded Copper Patch Cords



STP6X3MIG

Part Number	Gauge (AWG)	Cable Diameter In. (mm)	Jacket Type
STP6X^M**	26	0.24 (6.1)	CM/LSZH

See panduit.com for available length (^) and color (**) options.

NetKey™ Category 6A and Category 6 Shielded Copper Cable

- Small diameter allows for improved pathway capacity, tighter bend radius and increased flexibility and ease during installation
- Third party tested by an independent laboratory and complies with the electrical channel requirements of ANSI/TIA-568.2-D and ISO 11801
- Complies with IEEE 802.3af, IEEE 802.3at and IEEE 802.3bt for PoE applications



PFL6X04BU-CEG

Part Number	Gauge (AWG)	Flammability Rating	Color
Category 6A F/UTP 4 Pair Copper Cable			
PFC6X04BU-CEG	23	CM	Blue
PFL6X04BU-CEG		LSZH (IEC 60332-1 and IEC 60332-3-22)	
Category 6 F/UTP 4 Pair Copper Cable			
PFC6004BU-G	23	CM	Blue
PFL6004BU-G		LSZH (IEC 60332-1)	

Available options may vary. See panduit.com for details.

Termination Tools



PDT110



CJT



NKSPB

Part Number	Description
Pan-Punch™ Termination Tool	
PDT110	Single pair punchdown tool and blade.
PDTH110	Replacement blade for single pair punchdown tool (PDT110).
NKSPB	Base used to assist in terminating punchdown modules.
NetKey™ Jack Module Termination Tools	
CJT	Leadframe module termination tool.
Copper Termination Tools and Accessories	
CJAST	Copper cable jacket strip tool.
CWST	Copper cable snipping tool.
CBOT24K	Tak-Ty® Cable Organizing Kit.

Fiber Optic Cable



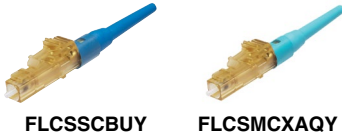
FLILX02Y



FLKL924Y

Part Number	Performance	Fiber Count	Jacket
Indoor 2.9mm Duplex Zipcord			
FLIL902Y	OS2	2	LSZH
FLILX02Y	OM3		
Indoor/Outdoor 900µm Tight-Buffered			
FLKL906Y	OS2	6	LSZH
FLKL912Y		12	
FLKL924Y		24	
FLKLX06	OM3	6	
FLKLX12		12	
FLKLX24		24	

OptiCam® Connectors and Termination Kits



FLCSSCBUY FLCSMCXAQY



FOCTT2-KIT



FSPCVR



FOSTFH

Part Number	Performance	Connector Type	Color
Connectors			
FLCSSCBUY	OS2	LC	Blue
FSC2SCBU		SC	
FLCSMCXAQY	OM3/OM4/OM5	LC	Aqua
FSC2MCXAQ		SC	

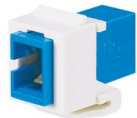
OptiCam® 2 Termination Tool Kits

Part Number	Description
FOCTT2-KIT	Includes the OptiCam 2 Tool and basic elements to terminate any OptiCam singlemode or multimode connectors. Additional cleaning and cleaving implements are sold separately.

OptiCam® 2 Accessories

Part Number	Description
FSPCVR	Precision fiber optic cleave tool with rotary blade.
FOSTFH	Fiber Optic Strip Tool (Five Hole).

NetKey™ Fiber Optic Adapters



NKSCMZIW

Part Number	Adapter Type	Alignment Sleeve
NKDLCMZ**	Duplex LC	Zirconia Ceramic
NKSCMZ**	Simplex SC	

NetKey™ Fiber Optic Enclosures

- Slide-out drawer slides forward a full 300mm for service access to all fiber terminations, connections, and/or splices
- Mounting hardware and fiber routing accessory kit included
- Supports fusion splicing with appropriate slack storage and cable management provisions

- Simple two-piece, all-metal body construction for easy and economical installation with no loose components to misplace; improved protection over plastic fiber drawers



NKFD1W12EIDLC

Part Number	Adapter Type	Fiber Type	Number of Adapters
NKFD1W12BUDLCZ	LC Duplex	Singlemode	12
NKFD1W24BUDLCZ			24
NKFD1W6BUDSCZ	SC Simplex		6
NKFD1W12BUDSCZ			12

NetKey™ Fiber Optic Patch Cords and Pigtails

- Compliant with ANSI/TIA 568-D.3-1 and ISO/IEC 11801
- 100% performance testing assures that patch cords and pigtails are standards compliant
- Q.C. identification label quality control reference provides lifetime traceability of test data



ST to ST Patch Cord



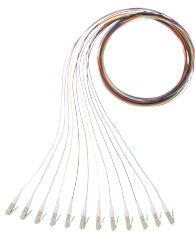
SC to SC Patch Cord



LC to LC Patch Cord



SC to LC Patch Cord



12-Color LC to 900um Pigtail Set

Part Number	Performance	Connectorization	Jacket
9µm Singlemode Patch Cords			
NKFP92ERLLSM***	OS2	Duplex LC to Duplex LC	OFNR (Riser)
NKFP92ERLSSM***		Duplex LC to Duplex SC	
NKFP923RSSSM***		Duplex SC to Duplex SC	
NKFP923R22SM***		ST to ST	
50µm Multimode Patch Cords			
NKFPX2ERLLSM***	OM3	Duplex LC to Duplex LC	OFNR (Riser)
NKFPX2ERLSSM***		Duplex LC to Duplex SC	
NKFPX23RSSSM***		Duplex SC to Duplex SC	
NKFPX23R22SM***		ST to ST	
NKFPZ22RLLSM***	OM4	Duplex LC to Duplex LC	
9µm Singlemode Pigtail Cords			
NKFP91BN1NNM***	OS2	LC to 900µm Pigtail	—
NKFP91BN3NNM***		SC to 900µm Pigtail	
NKFP91BN2NNM***		ST to 900µm Pigtail	
50µm Multimode Pigtail Cords			
NKFPX1BN1NNM***	OM3	LC to 900µm Pigtail	—
NKFPX1BN3NNM***		SC to 900µm Pigtail	
NKFPX1BN2NNM***		ST to 900µm Pigtail	
NKFPZ1BN1NNM***	OM4	LC to 900µm Pigtail	
9µm Singlemode Pigtail Kits			
NKFP91BN1NKM***	OS2	12-Color LC to 900µm Pigtail Set	—
50µm Multimode Pigtail Kits			
NKFPX1BN1NKM***	OM3	12-Color LC to 900µm Pigtail Set	—

See panduit.com for available length (***) options.

Part Number	Description
Fiber Optic Fusion Splice Accessories	
FOSMF	Fiber Optic Splice Module 24 Fusion For Rack Mount Enclosure.
FSC24	Splice Chip 24 Position.

Racks



R2P

Part Number	Height In. (mm)	Width In. (mm)	Depth In. (mm)	No. of Rack Units	Equipment Rails	Load Capacity Lbs.	Color
R2P	84.0 (2134)	20.3 (516)	3.0 (76)	45	#12-24 Threaded	1000	Black
R4P		23.3 (591)	30.0 (762)			2500	

Cable Managers

- Cable management products and accessories maintain bend radius control and cable performance while bundling and securing cable to prevent snags and stress from over-bending



WMPV45E



WMP1E



WMPFSE



CMPH1



CMPH2



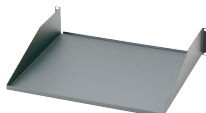
CMPHF1

Part Number	Description	Height In. (mm)	Width In. (mm)	Depth In. (mm)	No. of Rack Units	Color
WMPFSE	NetRunner™ Horizontal Cable Manager, Front Only.	1.70 (44.1)	19.0 (483)	3.7 (93.7)	1	Black
WMPV45E	NetRunner™ Front and Rear Vertical Cable Manager with Dual Hinged Cover, Wire Retainers, and Side Mount Brackets.	83.0 (2108)	4.90 (125)	12.0 (306)	45	
WMPSE	PatchLink™ Front and Rear Horizontal Cable Manager with dual hinged cover.	1.70 (44.1)	19.0 (483)	8.90 (226)	1	
WMP1E	PatchLink™ Front and Rear Horizontal Dual-Sided Cable Manager with Dual Hinged Cover.	3.50 (88.9)			2	
WMPF1E	PatchLink™ Front and Rear Horizontal Single-Sided Cable Manager with Dual Hinged Cover.	1.72 (4.37)	19.0 (483)	3.7 (94.2)	1	
CMPH1	OpenAccess™ Front and Rear Horizontal Cable Manager with Optional Snap-On Cover.					
CMPH2	OpenAccess™ Front and Rear Horizontal Cable Manager with Optional Snap-On Cover.	3.47 (88.1)	8.60 (218)	2		
CMPHF1	OpenAccess™ Front Only Horizontal Single-Sided Cable Manager with Optional Snap-On Cover.	1.70 (44.0)	6.2 (157)	1		
NMF4	NetManager™ High Capacity Horizontal, Single-Sided Cable Manager.	7.00 (177)				
PR2VSD06	PatchRunner™ 2 Vertical Cable Manager, Dual-Sided, Single Door, Front and Rear Fingers.	83.8 (2130)	6.0 (152.4)	20.2 (526)	45	
PR2VEP	Patchrunner™ 2 End Panel for use with 84" H (2134mm) Managers.	83.9 (2131)	16.5 (420)	1.6 (41.0)		

Rack Mount Shelves



SRM19FM1



SRM19FM2

Part Number	No. of Rack Units	Load Rating Lbs.	Material	Color
SRM19FM1	1	30	Steel	Black
SRM19FM2	2	50		

Grounding



RGS134-1Y



GPQC10-1/0



RGCBNJ660P22

Part Number	Description
RGS134-1Y	Rack Grounding Strip provided with 5cc of Antioxidant, One Grounding Sticker, and Three M6 x 12mm and #12-24 x 1/2" Thread-Forming Screws. Dimensions: 78.65" (2m) L x 0.67" (17mm) W x 0.05" (1.27mm) D.
GPQC10-1/0	Access Floor Grounding Clamp for 7/8" Square, 1" Round, and 1-1/8" Round Pedestals.
RGCBNJ660P22	Jumper Kits, Common Bonding Network (CBN), #6 AWG (16mm ²) Jumper, 60 (1.52m) L.
RGCBNJ660PY	Jumper Kits, Common Bonding Network (CBN), #6 AWG (16mm ²) Jumper, 60 (1.52m) L.
RGS134-1Y	Grounding Strip Kits, One, 78.65" (2m) x .67" (17mm) x .05" (1.27mm) Strip.
RGS134B-1	Grounding Strip Kits, One, 78.65" (2m) x .67" (17mm) x .05" (1.27mm) Strip.
RGESDWS	ESD Wrist Strap, 6' (1.8m) Cord, Blue.
RGESD2-1	ESD Port Kits, 2 Hole, 5/8 (15.9mm) Hole Spacing, Thread-Forming Screws.
RGESD2B-1	ESD Port Kits, 2 Hole, 5/8 (15.9mm) Hole Spacing, Cage Nuts.
RGRB19CN	Grounding Busbar Kits, 19" (483mm) Lgth, 20 mounting holes, 5/8" (15.9mm) Hole Spacing.
CNBK	Bonding Cage Nut Kit.
RGTBSG-C	Bonding Screw, Green.

Accessories



TLBP2S-V



CPAF2BLY



FLBSIM-51



RSHLF



CNWSM6-C



R2PPDUB

Part Number	Description
SRB19BLY	Strain Relief Bar, Extended, 2", Black.
TLBP1S-V	Tool-Less Blanking Panel, 1 RU, Square Hole.
TLBP1R-V	Tool-Less Blanking Panel, 1 RU, Round Hole.
TLBP2S-V	Tool-Less Blanking Panel, 2 RU, Square Hole.
TLBP2R-V	Tool-Less Blanking Panel, 2 RU, Round Hole.
CPAF1BLY	Filler Panel, 1 RU, Angled, Black.
CPAF2BLY	Filler Panel, 2 RU, Angled, Black.
FLBSIM-51	Blanking Shade for 4-51 Consecutive Rack Units on 19.00" Standard Rails, Black.
RSHLF	19" x 30" Rack Shelf for 4 Post Rack.
S1224-C	Threaded #12-24 Screw Rails for 2 Post Racks, 4 Post Racks, and Cabinets.
CNWS1224-C	12-24 Cage Nuts and Screws.
CNWSM6-C	M6 Screws with Cage Nuts.
R2PPDUB	Power Outlet Unit (POU) Bracket for 2 and 4 Post Racks.

Cabinets



E6212B1



E6412B2

Part Number	Nominal Width mm	Height (RU)	Nominal Depth mm	Side Panels	Color	Packaging
Net-Access™ Cabinets						
E6212B1	600	12	1070	2	Black	Assembled on Pallet
E6412B2		24				



PZWMC12W

Part Number	Width In. (mm)	Depth In. (mm)	Height In. (mm)	No. of Rack Units	Material	Color	Door Type
PanZone® Wall Mount Cabinet							
PZWMC12W	258 (635)	258 (635)	23.8 (604.5)	12	Steel	Black	Window



DAE6212B

Part Number	Width In. (mm)	Depth In. (mm)	Height In. (mm)	No. of Rack Units	Material	Color	Door Type
Net-Verse™ Cabinets							
DAE8212BF	31.5 (800)	42.7 (1000)	80.5 (2045)	42	Steel	Black	Front: Single Hinged Rear: Split Hinged
DAE6212B	23.6 (600)						

Power Distribution Units (PDUs)



P12B34M



P30B06M



P24D40M



P24D03M

Part Number	Amperage (A)	No. of Outlets	Plug Type	Length (m)	Color
Basic					
P12B34M	16	(12)C13	IEC 60309 2P+E 6h 16A	3	Black
P22B39M		(20)C13(2)C19			
P30B06M	32	(24)C13(6)C19	IEC 60309 2P+E 6h 32A	3	Black
P42B11M		(30)C13(12)C19			
Intelligent					
P24D40M	16	(20)C13, (4)C19	IEC 60309 2P+E 6h 16A	3	Black
P24D43M	32	(12)C13, (12)C19	IEC 60309 3P+N+E 6h 32A		
P24D03M		(20)C13, (4)C19	IEC 60309 2P+E 6h 32A		
P16D37M		(12)C13, (4)C19	IEC 60309 2P+E 6h 32A		

Security Devices



PSL-DCJB



PSL-DCJB-BL



PSL-DCJB-BU



PSL-LCAB



FLCCLIW-X

Part Number	Type	Color	Number of Keys
Blockout Devices			
PSL-DCJB	RJ45	Red	1
PSL-DCJB-BL		Black	
PSL-DCJB-BU		Blue	
PSL-LCAB	LC Duplex Adapter	Red	
Fiber LC Connector Lock-In Device			
FLCCLIW-X	Duplex Clip	International White	1



PANDUIT™

Panduit Singapore Pte. Ltd.
60 Tuas Avenue 11
Singapore 639106

cs-ap@panduit.com
1-800-PANDUIT (Singapore)
1800 801 435 (Malaysia)
001 803 65 7571 (Indonesia)
001 800 65 6385 (Thailand)

www.panduit.com

