

**Preferred Parts for
Network Infrastructure**



North America

Network Infrastructure

Today's networks support ever-expanding converged applications for voice, data, and video, as well as functions such as intelligent lighting, security, safety systems, and more. Panduit® provides the industry's most comprehensive and holistic portfolio of products and services that enable sustainable, energy-efficient enterprises. Innovative design features provide easy installation, reduced maintenance costs, and improved network reliability and flexibility. This catalog features the preferred offering for both physical infrastructure and the intelligence to solve the most challenging business problems customers face as they connect multiple systems that span from the Enterprise to the Data Center and across the Manufacturing floor. For the complete offering, please contact your local Panduit representative or visit us at <http://www.panduit.com>.

Table of Contents

Copper Cable	3	QuickNet™ SFQ Fiber Adapter Panels and Accessories	17
IndustrialNet™ Copper Cable	3	Mini-Com® Fiber Adapters	17
RJ45 Patch Cords	4	Splicing and Cable Management Solutions	18
IndustrialNet™ RJ45 Patch Cords	4	Fiber Optic Trunk Assemblies	18
10Gig SFP+ Direct Attach Passive Copper Cable Assemblies	4	Fiber Optic Interconnect Assemblies	18
RJ45 Jack Module	5	Fiber Optic Patch Cords	19
45° Angled Wire Caps for TX6A™, TX6™ PLUS and TX5e™	5	Fiber Optic Cable	19
MiniCom® UTP Jack Modules	5	Industrial Dielectric Double Jacketed (DDJ) Fiber Optic Cable	20
TX6A™ Category 6A UTP Field Term RJ45 Plug	5	Fiber Build Up Kits	20
Faceplates (for use with MiniCom® Connectors)	6	Fiber Connectors	20
Surface Mount Box (for use with MiniCom® Connectors)	6	Fiber Optic Termination Tools	20
Faceplate Frames and Inserts	7	Cabinets and Thermal Management	21
GFCI Faceplates and Inserts	7	Net-Access™ S-Type Cabinets	21
IndustrialNet™ Single Service Ports	8	Net-Access™ N-Type Cabinets	21
IndustrialNet™ Connectors	8	Net-Access™ Cabinet Accessories	21
Audio Visual	9	Net-Verse™ D-Type Cabinets	22
HDMI Patch Cords	9	Net-Verse™ Cabinet Accessories	22
In Wall Boxes and Accessories	9	Air Inlet Ducting and Air Sealing Accessories	23
Table Boxes and Accessories	9	Pre-Configured Micro Data Center (MDC)	23
AV Modules	10	Racks	24
Above Floor and Surface Raceway	11	Rack Accessories	24
Above Floor Raceway	11	Cable Managers	24
Surface Raceway	11	Power Distribution Units (PDUs)	25 – 26
NetKey® Jack Modules	12	Power Distribution Units (PDUs) Accessories	27
NetKey® Patch Cords	12	Industrial Network Uninterruptible Power Supply (UPS)	27
NetKey® Fiber Patch Cords and Pigtails	12	Wyr-Grid® Overhead Cable Tray Routing System	28
NetKey® Faceplates and Adapters	13	J-Pro™ Cable Support System	28
NetKey® Patch Panels – Punchdown	13	FiberRunner® 6x4 Cable Routing System	29
NetKey® Patch Panels – Modular	13	Zone Enclosures	30
Patch Panels, Kits and Accessories	14	Universal Network Zone Systems	30
Industrial Adapters and Patch Panels	14	Pre-Configured Network Zone Systems	31
HD Flex™ 6-Port Fiber Enclosures and Panels	15	Pre-Configured Industrial Distribution Frame (IDF)	31
HD Flex™ LC/MPO Cassettes	15	IntraVUE™ Edge	31
HD Flex™ 4-to-1 Conversion Cassettes	15	Grounding	32
HD Flex™ LC Splice Cassettes	15	Labeling	33
HD Flex™ Adapter Panel and Accessories	15	Cable Ties and Bundling	34
Opticom® QuickNet™ Enclosures and Panels	16	Stainless Steel Cable Ties	34
Opticom® LC/MPO Cassettes	16	Cable Accessories	34
Opticom® Fiber Adaptor Panels and Accessories	16	Security Devices	35
QuickNet™ Patch Panels and Accessories	17	Tools	35
QuickNet™ SFQ LC/MPO Cassettes	17		

Copper Cable



PUP6AV04BU-G



PUP6004BU-W



PUO6C04BL-U

Part Number	Description	Min. Order Qty. (MOQ)*	Min. Order Incrmt. (MOI)*	UOM
Category 6A (Unshielded)				
PUP6AV04BU-G	Premium Category 6A, 4-pair, 23 AWG, U/UTP, plenum (CMP), Blue.	9000	1000	Ft.
PUR6AV04BU-G	Premium Category 6A, 4-pair, 23 AWG, U/UTP, riser (CMR), Blue.	5000	1000	Ft.
Category 6 (Unshielded)				
PUP6004BU-W	Enhanced Category 6, 4-pair, 23 AWG, U/UTP, plenum (CMP), Blue.	12000	1000	Ft.
PUR6004BU-W	Enhanced Category 6, 4-pair, 23 AWG, U/UTP, riser (CMR), Blue.	12000	1000	Ft.
PUP6C04BU-U	Category 6, 4-pair, 23 AWG, U/UTP, plenum (CMP), Blue.	12000	1000	Ft.
PUR6C04BU-U	Category 6, 4-pair, 23 AWG, U/UTP, riser (CMR), Blue.	12000	1000	Ft.
Outdoor Plant (OSP)**				
Category 6				
PUO6C04BL-U	Category 6, 4-pair, 23 AWG, U/UTP, outside plant (OSP), Black.	9000	1000	Ft.
Category 6A				
PFO6X04BL-CEG	Category 6A, 4-pair, 23 AWG, F/UTP outside plant (OSP), Black.	12 rolls	12 rolls	Roll

*MOQ needs to be met prior to MOI. Contact Panduit Customer Service for additional information. Additional colors available. Contact Panduit Customer Service for additional information or www.panduit.com.
 ** It is for duct and conduit installations only. It is not to be used in aerial or direct burial applications.

IndustrialNet™ Copper Cable



IUC6C04ABL-CEG



IFC6C04BBL-CEG



ISFCH5C04ATL-XG

Part Number	Description	Min. Order Qty. (MOQ)*	Min. Order Incrmt. (MOI)*	UOM
ISFCH6X04ATLUG	Category 6A, 4-pair, 24 AWG stranded, SF/UTP, industrial 600V, (CMX), Teal.	10000	1000	Ft.
ISFCH6X04BTLUG	Category 6A, 4-pair, 26 AWG stranded, SF/UTP, industrial 600V, (CMX), Teal.	10000	1000	Ft.
ISX6X04ATL-LED	Category 6A, 4-pair, 24 AWG stranded, S/FTP, (PUR), Teal.	6	1	Roll
IUC6C04ABL-CEG	Category 6, 4-pair, 24 AWG stranded, U/UTP, flame-retardant (CM), Black.	6	1	Roll
IFC6C04BBL-CEG	Category 6, 4-pair, 26 AWG stranded, F/UTP, flame-retardant (CM), Black.	6	1	Roll
ISFCH5C04ATL-XG	Category 5e, 4-pair, 24 AWG stranded, SF/UTP, 600V high flex, flame-retardant (CM/CMX), Teal.	9000	1000	Ft.
IFRH6C04BL-UG	Category 6, 4-pair, 23 AWG solid, F/UTP, industrial 600V, (CMR), Black.	5000	1000	Ft.
IFRH5C04BL-UG	Category 5e, 4-pair, 23 AWG solid, F/UTP, industrial 600V, (CMR), Black.	9000	1000	Ft.

*MOQ needs to be met prior to MOI. Contact Panduit Customer Service for additional information. Additional colors available. Contact Panduit Customer Service for additional information or www.panduit.com.

RJ45 Patch Cords



UTP28X*



UTP28SP*

Part Number	Description	Std. Pkg. Qty.	Std. Ctn. Qty.
Category 6A 28 AWG			
UTP28X7	Category 6A 28 AWG UTP patch cord, 7 feet, Off White.	1	10
UTP28X7BU	Category 6A 28 AWG UTP patch cord, 7 feet, Blue.	1	10
Category 6A 24 AWG			
UTP6A7	Category 6A 24 AWG UTP patch cord, 7 feet, Off White.	1	10
UTP6A7BU	Category 6A 24 AWG UTP patch cord, 7 feet, Blue.	1	10
Category 6 28 AWG			
UTP28SP7	Category 6 28 AWG UTP patch cord, 7 feet, Off White.	1	10
UTP28SP7BU	Category 6 28 AWG UTP patch cord, 7 feet, Blue.	1	10
Category 6 24 AWG			
UTPSP7Y	Category 6 24 AWG UTP patch cord, 7 feet, Off White.	1	10
UTPSP7BUY	Category 6 24 AWG UTP patch cord, 7 feet, Blue.	1	10

Standard lengths include: 1, 3, 5, 7, 9, 10 and 14 feet.
 Additional colors and lengths available. Contact Panduit Customer Service for additional information or www.panduit.com.
 Bulk packaging available: Add -Q for pack of 25.

IndustrialNet™ RJ45 Patch Cords



ISTPH6X1MTL

Part Number	Description	Std. Pkg. Qty.	Std. Ctn. Qty.
ISTPH6X1MTL	Category 6A 600V, 26 AWG stranded, SF/UTP patch cord, RJ45 plug to RJ45 plug, 1 meter, Teal.	1	10
ISTPHCH1MTL	Category 5e 600V 24 AWG stranded SF/UTP patch cord, RJ45 plug to RJ45 plug, 1 meter, Teal.	1	10

Standard lengths are from 0.3 meters to 40 meters. Contact Panduit Customer Service for additional colors and lengths.

10Gig SFP+ Direct Attach Passive Copper Cable Assemblies



PSF1PXA*MBL

Part Number	Description	Std. Pkg. Qty.	Std. Ctn. Qty.
PSF1PXA1.5MBL	SFP+ 10Gig Direct Attach Passive Copper Cable Assembly, 1.5m, Black.	1	10
PSF1PXA2MBL	SFP+ 10Gig Direct Attach Passive Copper Cable Assembly, 2m, Black.	1	10
PSF1PXA3MBL	SFP+ 10Gig Direct Attach Passive Copper Cable Assembly, 3m, Black.	1	10

*Direct Attach Passive Cable Assemblies shown in BL (Black). Other colors available: WH (White), BU (Blue), RD (Red), GR (Green), or OR (Orange). Available in 0.5m length increments from 0.5m to 7m.

RJ45 Jack Module



CJ6X88TGBL



CJ688TGBU

Part Number	Description	Std. Pkg. Qty.	Std. Ctn. Qty.
Unshielded			
CJ6X88TGBL	Category 6A RJ45 UTP Mini-Com® Jack, Black.	1	50
CJ6X88TGBU	Category 6A RJ45 UTP Mini-Com® Jack, Blue.	1	50
CJ6X88TGWH	Category 6A RJ45 UTP Mini-Com® Jack, White.	1	50
CJ688TGBL	Category 6 RJ45 UTP Mini-Com® Jack, Black.	1	50
CJ688TGBU	Category 6 RJ45 UTP Mini-Com® Jack, Blue.	1	50
CJ688TGWH	Category 6 RJ45 UTP Mini-Com® Jack, White.	1	50

Additional colors available. Contact Panduit Customer Service for additional information or www.panduit.com. Bulk packages available: Add -24 for pack of 24 or -C for pack of 100.

45° Angled Wire Caps for TX6A™ and TX6™ PLUS Mini-Com® UTP Jack Modules



Part Number	Description	Std. Pkg. Qty.	Std. Ctn. Qty.
Left/Right			
CJLRCAPBU-C	Category 6A 45° angled left/right TG wire cap, package of 100.	100	500
CJLRCAPIW-C	Category 6 45° angled left/right TG wire cap, package of 100.	100	500
Up/Down			
CJUDCAPBU-C	Category 6A 45° angled up/down TG wire cap, package of 100.	100	500
CJUDCAPIW-C	Category 6 45° angled up/down TG wire cap, package of 100.	100	500

Note: 45° Angled Wire Caps available in packs of 10. Change -C to -X.

TX6A™ Category 6A UTP Field Term RJ45 Plug



Part Number	Description	Std. Pkg. Qty.	Std. Ctn. Qty.
Standard			
FP6X88MTG	TX6A™ Category 6A UTP Field Term RJ45 Plug.	1	50
FP6X88MTG-X	TX6A™ Category 6A UTP Field Term RJ45 Plug, package of ten.	10	100
Angled			
FPUD6X88MTG	TX6A™ Category 6A UTP Angled Field Term RJ45 plug.	1	50
FPUD6X88MTG-X	TX6A™ Category 6A UTP Angled Field Term RJ45 plug, package of ten.	10	100
CPUDCAPBL-X	Category 6A 45° angled up/down wire cap for use with TX6A™ Category 6A UTP Field Term Angled Field Term, package of ten.	10	—
Test Cord Adapter			
FP6X88TC	TX6A™ Field Term RJ45 Plug Test Cord, Red, 1 meter.	1	1

Faceplates (for use with Mini-Com[®] Connectors)



CFFPL4BL



CFPL4



CFPE2

Part Number	Description	Std. Pkg. Qty.	Std. Ctn. Qty.
Furniture Faceplates			
CFFP4BL	Furniture faceplate, 4-port, standard, Black.	1	10
CFFPL4BL	Furniture faceplate with labeling, 4-port, standard, Black.	1	10
CFFPL2BL	Furniture faceplate with labeling, 2 port, standard, Black.	1	10
CFFPHM4BL	Furniture faceplate, 4-port, Herman Miler, Black.	1	10
Classic Faceplates			
CFPL2WHY	Classic faceplate, single gang, 2-port with label and label cover.	1	10
CFPL4WHY	Classic faceplate, single gang, 4-port with label and label cover.	1	10
Executive Faceplates			
CFPE2WHY	Executive faceplate, single gang, 2-port with label and label cover.	1	10
CFPE4WHY	Executive faceplate, single gang, 2-port with label and label cover.	1	10
Stainless Steel Faceplates			
CFPL2SY	Stainless steel faceplate, single gang, 2-port with label and label cover.	1	10
CFPL4SY	Stainless steel faceplate, single gang, 4-port with label and label cover.	1	10

Additional colors available. Contact Panduit Customer Service for additional information or www.panduit.com.

Surface Mount Box (for use with Mini-Com[®] Connectors)



CBX2IW-AY



CBXQ2IW-A

Part Number	Description	Std. Pkg. Qty.	Std. Ctn. Qty.
CBX1IW-A	Surface mount box, 1-port, plenum rated. Off White.	1	10
CBXQ1IW-A		1	10
CBX2IW-AY	Surface mount box, 2-port, plenum rated. Off White.	1	10
CBXQ2IW-A		1	10
CBX4IW-AY	Surface mount box, 4-port, Off White.	1	10
CBXQ4IW-A	Surface mount box, 4-port, plenum rated. Off White.	1	10
CBXF6IW-AY	Surface mount box, 6-port, multimedia, Off White.	1	10
CBXQ6IW-A	Surface mount box, 4-port, plenum rated. Off White.	1	10

Additional colors available. Contact Panduit Customer Service for additional information or www.panduit.com.

Faceplate Frames and Inserts

- Faceplate frames allow customizable solutions
- Combine Mini-Com® and NetKey® Modules in a single faceplate through frame inserts



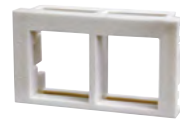
CBEIWY



CBEIW-2GY



CHF2MIW-X



NKHF2MIW-X



CHBHIW

Part Number	Part Description
CBEIWY	Single gang faceplate frame.
CBEIW-2GY	Double gang faceplate frame.
CHF2MIW-X	Two module 1/3 insert for Mini-Com® Modules.
NKHF2MIW-X	Two module 1/3 insert for NetKey® Modules.
CHBHIW	Hooded insert.

For other colors, replace IW (Off White) with BL (Black), IG (International Gray), EI (Electric Ivory), or WH (White).

GFCI Faceplates and Inserts



CFGBIW
Faceplate not included.



CPGIW



CPGIW-2G



CFG4IW



CFG2IW



NK2RMFIW



NK4RMFIW

Part Number	Part Description
CFGBIW	Brush insert, off white.
CPGIW	Single gang rectangular faceplate.
CPGIW-2G	Double gang rectangular faceplate.
CFG4IW	Mini-Com® Four Module Rectangular Adapter.
CFG2IW	Mini-Com® Two Module Rectangular Adapter.
NK4RMFIW	NetKey® Four Module Rectangular Adapter.
NK2RMFIW	NetKey® Two Module Rectangular Adapter.

For other colors, replace IW (Off White) with BL (Black), IG (International Gray), EI (Electric Ivory) or WH (White).

IndustrialNet™ Single Service Ports



ISSP2UC6XNNBL

Part Number	Description	Std. Pkg. Qty.	Std. Ctn. Qty.
ISSP2SJ5ENNBL	Category 5e shielded jack.	1	—
ISSP2SJ6XNNBL	Category 6A shielded jack.	1	—
ISSP2UC5ENNBL	Category 5e UTP RJ45 coupler.	1	—
ISSP2UC6XNNBL	Category 6A UTP RJ45 coupler.	1	—
ISSP2UC1NNBL	USB 2.0 A-A coupler.	1	—

IndustrialNet™ Connectors



IAEBH**



MPI588T



ISPS5E44MFA
ISPS6A88MFA



ICAM12DRJS



ICAM12XRJS



ICAM12X90RJS

Part Number	Description	Std. Pkg. Qty.	Std. Ctn. Qty.
Industrial Bulkhead Connector with Protective Cover			
IAEBH6X	Category 6A Variant 1 IP67 rated RJ45 connector, UTP.	1	10
IAEBH6XS	Category 6A Variant 1 IP67 rated RJ45 connector, STP.	1	10
IAEBH6	Category 6 Variant 1 IP67 rated RJ45 connector, UTP.	1	10
IAEBH6S	Category 6 Variant 1 IP67 rated RJ45 connector, STP.	1	10
IAEBH5E	Category 5e Variant 1 IP67 rated RJ45 connector, UTP.	1	10
IAEBH5ES	Category 5e Variant 1 IP67 rated RJ45 connector, STP.	1	10
MPI588T	Category 5e Variant 1 IP67 rated modular plug, UTP.	1	10
Industrial Bulkhead Coupler with Protective Cover			
IAEBHC6	Category 6 Variant 1 IP67 rated RJ45 coupler, UTP.	1	10
IAEBHC5E	Category 5e Variant 1 IP67 rated RJ45 coupler, UTP.	1	10
Industrial Mini-Com® Coupler Module			
IAEBHUSBAA	USB 2.0 Variant 1 IP67 rated female A to female A coupler, UTP.	1	10
Industrial M12 Connectors			
ISPS5E44MFA	Category 5e M12 D-Code STP field terminable connector, male.	1	25
ICAM12DRJS	Category 5e M12 D-Code to RJ45 industrial adapter, panel mount.	1	10
ICAM12XRJS	Category 6A M12 X-Code to RJ45 industrial adapter, straight, panel mount.	1	15
ICAM12X90RJS	Category 6A M12 X-Code to RJ45 industrial adapter, angled, panel mount.	1	15
ISPS6A88MFA	Category 6A M12 X-Code STP field terminable connector, male.	1	10

Audio Visual

HDMI Patch Cords

- 3rd Party Certified to HDMI 2.0 Specification
- 4K / UHD, 60 Hz, 4:4:4 resolution



HDMI1MWH

Part Number	Part Description
HDMI1MBL	HDMI 2.0 patch cord, 1m, Black.
HDMI2MBL	HDMI 2.0 patch cord, 2m, Black.
HDMI4MBL	HDMI 2.0 patch cord, 4m, Black..

For Black, replace WH (White) with BL (Black).

In Wall Boxes and Accessories

- Full grid pattern for customized equipment placement and cable management
- Each box includes push-mount cable ties for cable management
- Power receptacle knockout



CMBBLWH

Part Number	Part Description	Height In.	Width In.
CMBBSWH	Small in-wall box for 16 inch stud installation.	8.65	17.41
CMBBLWH	Large in-wall box for 16 inch stud installation.	15.4	
CMBBCMR	Cable management D-ring.	—	—
CMBBRKT	Equipment bracket.	—	—

Table Boxes and Accessories

- Table boxes come pre-populated with power outlets
- Each table box includes both a Mini-Com® and NetKey® (Keystone) Faceplate
- Faceplates can be filled with any connectivity or blank modules
- Once installed, faceplates can be removed at a later date for future moves, adds, and changes



PND100



PND110



PND400

Part Number	Part Description	Module Spaces	Power
PND100	Cable nook box.	8	UL-cUL Listed Power Module with 2 Type A USB 2.0 Ports
PND110	Tilt up table box.	4	UL-cUL Listed Power Module
PND400	Retractable HDMI cable for cable nook box with mounting bracket.	—	—

AV Modules



Part Number	Part Description	Footprint	Specification
CMBIW-X	Blank module.	Mini-Com [®]	—
CMHDMIW	2-position HDMI module.		HDMI 2.0
CMUSBAAIW	USB module.		USB 2.0
CM35MSCIWY	3.5 stereo coupler.		—
CM35MSSIW	Solder Type 3.5 stereo connector.		—
CMFIW	F Type coupler.		3 GHz
CMFSRIWY	Self-terminating F Type module.		2 GHz
CMD15HDIWY	2-position VGA module, 15 pin with circuit board to be terminated on site.	Insert	—
CHD15HDCIWY	1/3 insert 15 pin VGA connector module.		—
NKBIW-X	Blank module.	Keystone	—
NKHDMIW	1-position HDMI module.		HDMI 2.0
NKUSBAAIW	USB module.		USB 2.0
NK35MSCIW	3.5 stereo coupler.		—
NKFIW	F Type coupler.		3 GHz

For other colors, replace IW (Off White) with BL (Black), WH (White), EI (Electric Ivory), IG (International Gray), or AW (Arctic White).

Above Floor and Surface Raceway

Above Floor Raceway

- ADA Compliant over floor raceway system
- Fast snap, tamper resistant base and cover
- Power rated 4-channel design



Part Number	Part Description
AFR4BCBL6	Above floor raceway base and cover, 6-foot, Black.
AFR4CCBL	Above floor raceway, coupler fitting, Black.
AFR4ECBL	Above floor raceway, end cap fitting, Black.
AFR4RABL	Above floor raceway, right angle fitting, Black.
AFR4JB2SBL	Above floor raceway, power rated two-piece snap together junction box, Black.
AFR4TRT70BL	Above floor raceway transition fitting from above floor raceway to T70, Black.
AFR4WTRBL	Above floor raceway, wall transition fitting, Black.
AFR4TBLGBL	Above floor raceway, table leg, Black.

For other colors, replace BL (Black) with OS (Office Slate) or IW (Off White).

Surface Raceway



Part Number	Description	Std. Pkg. Qty.	Std. Ctn. Qty.
LD Profile Raceway			
LD3IW6-A	LD3, low voltage 1-piece single channel raceway with adhesive.	6 Ft.	120 Ft.
LD5IW6-A	LD5, low voltage 1-piece single channel raceway with adhesive.	6 Ft.	120 Ft.
LD10IW6-A	LD10 low voltage 1-piece single channel raceway with adhesive.	6 Ft.	120 Ft.

LD Profile Raceway Fittings			
DCF10IW-X	Drop ceiling/entrance end fitting for use with LD10 raceway.	10	50
OFC10WH-X	Outside corner fitting for use with LD10 raceway.	10	50
ECF10WH-X	End cap fitting for use with LD10 raceway.	10	50
RAF10IW-X	Right angle fitting for use with LD10 raceway.	10	50

Junction Boxes Used with LD Profile Raceway			
JB1IW-A	Single gang one-piece outlet box with adhesive backing.	1	10
JBX3510IW-A	Single gang two-piece snap together outlet box with adhesive backing.	1	10
JBP1DIW	Single gang power rated two-piece deep outlet box.	1	10
JBP2DIW	Double gang power rated two-piece deep outlet box.	1	10

*Raceway listed in 6 foot lengths. Other lengths available include: 8 and 10 foot.
Raceway fittings listed for LD raceway size 10. LD raceway size 3 and 5 also available.
Additional colors available. Contact Panduit Customer Service for additional information or www.panduit.com.

NetKey[®] Jack Modules



Part Number	Description	Std. Pkg. Qty.	Std. Ctn. Qty.
NK6X88MBU	Category 6A, 8-position, keystone punchdown jack, Blue.	1	50
NK688MBU	Category 6, 8-position, keystone punchdown jack, Blue.	1	50

Additional colors available. Contact Panduit Customer Service for additional information or www.panduit.com. Bulk packages of 25 available; add: -Q to end of part number.

NetKey[®] Patch Cords



Part Number	Description	Std. Pkg. Qty.	Std. Ctn. Qty.
NK6APC7BU	Category 6A UTP patch cord, 7 ft. Blue.	1	10
NK6PC7BUY	Category 6 UTP patch cord, 7 ft. Blue.	1	10

Additional colors available. Contact Panduit Customer Service for additional information or www.panduit.com. Standard lengths include 3, 5, 7, and 10ft. Contact Panduit Customer Service for additional colors and lengths.

NetKey® Faceplates and Adapters



Part Number	Description	Std. Pkg. Qty.	Std. Ctn. Qty.
NK4FNIW	Single gang faceplate, 4-port, Off White.	1	10
NK4FIWY	Single gang faceplate with labels, 4-port, Off White.	1	10
NK4HSFIWY	Single gang sloped horizontal faceplate with labels, 4-port, Off White.	1	10
NK4VSFIW	Single gang sloped vertical faceplate with labels, 4-port, Off White.	1	10

NetKey® Patch Panels – Punchdown



Part Number	Description	Std. Pkg. Qty.	Std. Ctn. Qty.
NK6PPG24Y	24-port patch panel, flat.	1	10
NKA6PPG24Y	24-port patch panel, angled.	1	10
NK6PPG48Y	48-port patch panel, flat.	1	10
NKA6PPG48Y	48-port patch panel, angled.	1	10

NetKey® Patch Panels – Modular



Part Number	Description	Std. Pkg. Qty.	Std. Ctn. Qty.
NKPP24FMY	Flush mount modular patch panel, 24-port, 1 RU.	1	10
NKPP48FMY	Flush mount modular patch panel, 48-port, 2 RU.	1	10
NKPPA48FMY	Flush mount angled modular patch panel, 48-port, 2 RU.	1	10
NKFP24Y	Modular faceplate patch panel, 24-port, 2 RU.	1	10
NKFP48Y	Modular faceplate patch panel, 48-port, 2 RU.	1	10
NKPPA48HDY	Modular high density angled patch panel, 48-port, 2 RU.	1	10

Patch Panels, Kits, and Accessories



CPP24FMWBLY



CPP48HDWBLY



CPPA48FMWBLY



DP48688TGY



SRB19BLY



SRBBRKT

Part Number	Description	Std. Pkg. Qty.	Std. Ctn. Qty.
Modular Patch Panels (Fit All Mini-Com® Connectors)			
CPPL24WBLY	24-port, patch panel with CFFPL4 faceplate and labels, 1 RU.	1	10
CPPL48WBLY	48-port, patch panel with CFFPL4 faceplate and labels, 2 RU.	1	10
CPPLA48WBLY	48-port, angled patch panel with CFFPL4 faceplate and labels, 2 RU.	1	10
CPP24FMWBLY	24-port, patch panel, flush mount, 1 RU.	1	10
CPPA48FMWBLY	48-port, angled patch panel, flush mount, 2 RU.	1	10
CPP48HDWBLY	48-port, high density patch panel, 1 RU.	1	10
CPPA48HDWBLY	48-port, high density angled patch panel, 1 RU.	1	10

Data-Patch™ Patch Panels

DP246X88TGY	24-port, flat, 1 RU, Category 6A RJ45 UTP Data-Patch™ Patch Panel, Black.	1	10
DP486X88TGY	48-port, flat, 2 RU, Category 6A RJ45 UTP Data-Patch™ Patch Panel, Black.	1	10
DP24688TGY	24-port, flat, 1 RU, Category 6 RJ45 UTP Data-Patch™ Patch Panel, Black.	1	10
DP48688TGY	48-port, flat, 2 RU, Category 6 RJ45 UTP Data-Patch™ Patch Panel, Black.	1	10

Strain Relief

SRB19BLY	Strain relief bar.	1	10
SRBBRKT	Quick release bracket kit for strain relief bars.	1	10
SRB19D5BL	Deep strain relief bar, extends 5".	1	10
SRB19D7BL	Deep strain relief bar, extends 7".	1	10

Industrial Adapters and Patch Panels



CADIN1IG



CDPP8RG

FDME8RG

Part Number	Description	Std. Pkg. Qty.	Std. Ctn. Qty.
Mini-Com® DIN Rail Mount Adapter			
CADIN1IG	Single-port DIN rail mount adapter, International Gray.	1	10
CADIN1BL	Single-port DIN rail mount adapter, Black.	1	10
IndustrialNet™ DIN Rail Mount Copper Patch Panel			
CDPP8RG	8-port patch panel, DIN rail mount.	1	10
CDPP8RG-S	8-port shielded patch panel, DIN rail mount.	1	10
IndustrialNet™ DIN Rail Mount Fiber Enclosure			
FDME8RG	8-port fiber optic enclosure, DIN rail mount.	1	10

HD Flex™ 6-Port Fiber Enclosures and Panels



FLEX1UPN06

Part Number	Description	Cassette/ FAP Openings.
FLEX1U06*	1 RU, HD Flex™ 6-Port Enclosure.	12
FLEX4U06*	4 RU, HD Flex™ 6-Port Enclosure.	48
FLEX1UPN06*	1 RU, HD Flex™ 6-Port Panel.	12
FLEX4UPN06*	4 RU, HD Flex™ 6-Port Panel.	48

*Offered in White (add WH to part number for White).

HD Flex™ LC/MPO Cassettes



FHC9N-12-10A

Part Number	Fiber Type	Fiber Count	Port Count	Number of MPOs	Number of Duplex LCs	Performance	Polarity
FHCZO-12-10U	OM4	12	6	1	6	Optimized	Universal
FHC9N-12-10AS	OS2					Standard	Method A
FHC9N-12-10AF						Standard	Modified Method A

*Universal Polarity require Method B cable assemblies.

HD Flex™ 4-to-1 Conversion Cassettes



FHC39N-08-10A

Part Number	Fiber Type	Fiber Count	Port Count	No. of Rear MPOs	Number of Front Duplex LCs	Performance
FHC3ZO-08-10B	OM4	8	4	1x8f	4	Optimized
FHC39N-08-10A	OS2					Standard

HD Flex™ LC Splice Cassettes



FHSZO-12-10R

Part Number	Fiber Type	Fiber Count	Port Count	Number of Duplex LCs	Performance
FHSZO-12-10*	OM4	12	6	6	Optimized
FHS9N-12-10*	OS2				Standard

*P for 250um pigtails, R for Ribbon Pigtails.

HD Flex™ Adapter Panel and Accessories



FHSXN-12-10N

Part Number	Description
FHSXN-12-10N	Six LC duplex multimode adapters in Aqua with zirconia sleeves.
FHS9N-12-10N	Six LC duplex singlemode adapters in Blue with zirconia sleeves.
FHMP-6-ABL	Six MPO type A adapters (key-up to key-down) in Black.
FHMP-6-BCG	Six MPO type B adapters (key-up to key-up) in Charcoal Gray.
FHSBBL06W	HD Flex™ Blanking Panel for 6-port enclosures and panels.

Opticom[®] QuickNet[™] Enclosures and Panels



FCE1U



FRME1



FMT1

Part Number	Description	Cassette/ FAP Openings.
FCE1U*	Rack mount fiber cassette enclosure 1 RU, with sliding/tilt drawer.	4
FCE4U*	Rack mount fiber cassette enclosure 4 RU, with sliding/tilt drawer.	12
FRME1U*	Rack mount fiber enclosure, 1 RU.	3
FRME4*	Rack mount fiber enclosure, 4 RU.	12
FWME2	Wall mount enclosure, two openings.	2
FMT1	Rack mount fiber tray, 1 RU.	4
CFAPPBL1	Fiber adapter patch panel, 1 RU.	4

*Offered in White (add WH to part number for White).

Opticom[®] LC/MPO Cassettes



FC29N-12-10AS

Part Number	Fiber Type	Fiber Count	Port Count	Number of MPOs	Number of Duplex LCs	Performance	Polarity
FC2ZO-12-10U	OM4	12	6	1	6	Optimized	Universal
FC29N-12-10AS	OS2					Standard	Method A
FC29N-12-10AF						Standard	Modified Method A
FC2ZO-24-10U	OM4	24	12	2	12	Optimized	Universal
FC29N-24-10AS	OS2					Standard	Method A
FC29N-24-10AF						Standard	Modified Method A

*Universal Polarity require Method B cable assemblies.

Opticom[®] Fiber Adaptor Panels and Accessories



FAP12WAQDLCZ

Part Number	Description
FAP6WAQDLCZ	Six LC duplex multimode adapters in Aqua with zirconia sleeves.
FAP6WBUDLCZ	Six LC duplex singlemode adapters in Blue with zirconia sleeves.
FAP12WBUDLCZ	Twelve LC duplex multimode adapters in Blue with zirconia sleeves.
FAP12WAQDLCZ	Twelve LC duplex singlemode adapters in Aqua with zirconia sleeves.
FMP6	Unloaded Mini-Com [®] Panel accepts six Mini-Com [®] Modules.
FAPB	Opticom [®] Blanking Panel.

QuickNet™ Patch Panels and Accessories



QAPP24BL



QAPP48HDBL



QPPBBL

Part Number	Description	Std. Pkg. Qty.	Std. Ctn. Qty.
QuickNet™ Patch Panels			
QAPP24BL	Angled 24-port patch panel accepts QuickNet™ Pre-Terminated Cassettes and Patch Panel Adapters (1 RU).	1	10
QAPP48HDBL	Angled 48-port patch panel accepts QuickNet™ Pre-Terminated Cassettes and Patch Panel Adapters (1 RU).	1	10
QAPP48HDVNSBL	Angled 48-port patch panel, with pre-printed vertical numbering on each port, accepts QuickNet™ Pre-Terminated Cassettes and Patch Panel Adapters (1 RU).	1	10
QPP48HDBL	Flat 48-port patch panel which accepts QuickNet™ Pre-Terminated Cassettes and Patch Panel Adapters (1 RU).	1	10
QSP48HDBL	Flat 48-port shielded all metal patch panel which accepts QuickNet™ Pre-Terminated Cassettes and Patch Panel Adapters (1 RU).	1	10
QuickNet™ Accessories			
QPPABL	Patch panel adapter accepts all Mini-Com® Modules for multimedia applications.	1	10
QPPBBL	Patch panel blank reserves space for future use and promotes proper air flow and cooling.	1	10

QuickNet™ SFQ LC/MPO Cassettes



FQ9N-12-10AS

Part Number	Fiber Type	Fiber Count	Port Count	Number of MPOs	Number of Duplex LCs	Performance	Polarity
FQZO-12-10U	OM4	12	6	1	6	Optimized	Universal
FQ9N-12-10AS	OS2					Standard	Method A
FQ9N-12-10AF						Standard	Modified Method A

*Universal Polarity require Method B cable assemblies.

QuickNet™ SFQ Fiber Adapter Panels and Accessories



FQMAP65BL

Part Number	Description
FQMAP65BL	Fiber optic migration adapter panel – six MPO adapters (key-up to key-down) in Black.
FQMAP66CG	Fiber optic migration adapter panel – six MPO adapters (key-up to key-up) in Charcoal Grey.

Mini-Com® Fiber Adapters



CMDAQLCZBL

Part Number	Description
CMDSLCZBU	Duplex LC fiber adapter (Blue) zirconium ceramic in BU (Blue) module.
CMDAQLCZBL	Duplex LC fiber adapter (Aqua) zirconium ceramic in BL (Black) module.

Splicing and Cable Management Solutions



FOSMF



FQCRCM

Part Number	Description
FOSMF	Fiber optic splice module 24 fusion for rack mount enclosure.
FOSMH1U	Splice module holder, 1 RU, holds up to four FOSMF splice modules for use with Panduit FCE1U or FCE1UA.
FSC24	Fiber splice tray kit for up to 24 fiber splices or 144 ribbon fiber splices for use in FRME3 or FRME4.
FRMHSS-4RU	HD fusion rack mount splice enclosure – 4 RU 864f ribbon splicing, 576f single fiber splicing.
FST48	Fiber splicing tray fits FRMHSS-4U holds 48 fusion or mechanical splices.
FST144R	Fiber splicing tray fits FRMHSS-4U holds 144 ribbon splices.
FLEX-CM-1UBKIT	HD Flex™ Cable Management 1 RU Universal Bracket 19" Kit.
FLEX-CLIP12	HD Flex™ Trunk Transition Clip (quantity two); 12-position.
FQCRCM	QuickNet™ Cassette Rear Cable Manager.
FZTCN7NNONNM001	OM4 12-fiber bare ribbon assembly, PanMPO™ Female to pigtail, optimized IL – 1 meter.
F9TCN5NNSNM001	OS2 12-fiber bare ribbon assembly, MPO female to pigtail, standard IL – 1 meter.

Fiber Optic Trunk Assemblies



F9TYP5555AAF***

Part Number	Description
FZTYP7575YAF***	OM4, 12-fiber trunk, plenum, PanMPO™ Female to PanMPO™ Female, HD Flex™ Transition, method B, optimized insertion loss, with pulling eye on one end – *** feet.
FZUYP7575YAF***	OM4, 24-fiber trunk, plenum, PanMPO™ Female to PanMPO™ Female, HD Flex™ Transition, method B, optimized insertion loss, pulling eye on one end – *** feet.
F9TYP5555AAF***	OS2, 12-fiber trunk, plenum, MPO female to MPO female, HD Flex™ Transition, method A, standard insertion loss, pulling eye on one end – *** feet.
F9UYP5555AAF***	OS2, 24-fiber trunk, plenum, MPO female to MPO female, HD Flex™ Transition, method A, standard insertion loss, pulling eye on one end – *** feet.

*** feet. 020= 20 feet, 100 = 100 feet.

Fiber Optic Interconnect Assemblies



FZTRP7N7NYNF***

Part Number	Description
FZTRP7N7NYNF***	OM4, 12-fiber interconnect, plenum, PanMPO™ Female to PanMPO™ Female, method B, optimized insertion loss – *** feet.
F9TRP5N5NANF***	OS2, 12-fiber interconnect, plenum, MPO female to MPO female, method A, standard insertion loss – *** feet.

*** feet. 020= 20 feet, 100 = 100 feet.

Fiber Optic Patch Cords



F92ERLNLNSNM***

Part Number	Description
FZ2ERLNLNONM***	OM4, 2-fiber 1.6mm patch cord, riser, LC duplex to LC duplex, standard polarity, optimized insertion loss – *** meters.
FZ2ERQ1Q1ONM***	OM4, 2-fiber 1.6mm patch cord, riser, push-pull LC to push-pull LC, standard polarity, optimized insertion loss – *** meters.
FZ2RLUNUNONM***	OM4, 2-fiber interconnect, low smoke zero halogen, LC uniboot to LC uniboot, standard polarity, optimized insertion loss – *** meters.
F92ERLNLNSNM***	OS2, 2-fiber 1.6mm patch cord, riser, LC duplex to LC duplex, standard polarity, standard insertion loss – *** meters.
F92ERQ1Q1SNM***	OS2, 2-fiber 1.6mm patch cord, riser, push-pull LC to push-pull LC, standard polarity, standard insertion loss – *** meters.
F92RLUNUNONM***	OS2, 2-fiber interconnect, low smoke zero halogen, LC uniboot to LC uniboot, standard polarity, optimized insertion loss – *** meters.

*Available in 0.5m length increments from 0.5m to 10m. Maximum length 50m.

Fiber Optic Cable



Part Number	Description	UOM	MOQ*
Indoor Distribution Cable			
FODPZ12Y	50µm OM4 12-fiber indoor distribution cable, plenum (OFNP), 900µm buffered fibers.	Ft.	—
FODPZ24Y	50µm OM4 24-fiber indoor distribution cable, plenum (OFNP), 900µm buffered fibers.	Ft.	—
FSDP912Y	9µm OS2 12-fiber indoor distribution cable, plenum (OFNP), 900µm buffered fibers.	Ft.	—
FSDP924Y	9µm OS2 24-fiber indoor distribution cable, plenum (OFNP), 900µm buffered fibers.	Ft.	—
Indoor Distribution Cable with Interlocking Armor			
FOPPZ12Y	50µm OM4 12-fiber indoor armored cable, plenum (OFCP), 900µm buffered fibers.	Ft.	—
FOPPZ24Y	50µm OM4 24-fiber indoor armored cable, plenum (OFCP), 900µm buffered fibers.	Ft.	—
FSPP912Y	9µm OS2 12-fiber indoor armored cable, plenum (OFCP), 900µm buffered fibers.	Ft.	—
FSPP924Y	9µm OS2 24-fiber indoor armored cable, plenum (OFCP), 900µm buffered fibers.	Ft.	—
Indoor/Outdoor Loose Tube Cable			
FOCPZ12Y	50µm OM4 12-fiber indoor-outdoor central tube cable, plenum (OFNP), 250µm fibers.	Ft.	—
FONPZ24Y	50µm OM4 24-fiber indoor-outdoor stranded tube cable, plenum (OFNP), 250µm fibers.	Ft.	—
FSCP912Y	9µm OS2 12-fiber indoor-outdoor central tube cable, plenum (OFNP), 250µm fibers.	Ft.	—
FSNP924Y	9µm OS2 24-fiber indoor-outdoor stranded tube cable, plenum (OFNP), 250µm fibers.	Ft.	—
Armored Outside Plant Cable			
FSWN912	9µm OS2 12-fiber outside plant armored (single armor, single jacket) cable, non-rated, 250µm fibers.	Ft.	—
FSWN924	9µm OS2 24-fiber outside plant armored (single armor, single jacket) cable, non-rated, 250µm fibers.	Ft.	—
FSWN948	9µm OS2 48-fiber outside plant armored (single armor, single jacket) cable, non-rated, 250µm fibers.	Ft.	—

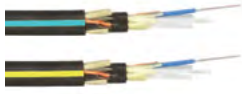
*Cables on the Preferred Parts list are suitable for a wide range of applications, making them a good choice for project specifications. These cables have favorable lead times and low MOQ's. See Panduit's Safety Stock List for a complete, up-to-date list of cables kept in stock.

All of the above are available in OM3, OM4 and OS2 with fiber counts 12, 24 and 48.

Armored and non-armored versions are available for outside plant and indoor-outdoor cables.

See Fiber Optic Cabling Line Card (FBL01-SA-ENG).

Industrial Dielectric Double Jacketed (DDJ) Fiber Optic Cable



Part Number	Description	UOM	MOQ
FSJD912	Twelve fibers OS2 singlemode indoor/outdoor, OFNR-LS (riser/LSZH).	Ft.	3281
FOJDZ12	Twelve fibers OM4 multimode indoor/outdoor, OFNR-LS (riser/LSZH).	Ft.	3281

Additional fiber counts available. Contact Panduit Customer Service for additional information or www.panduit.com.

Fiber Build Up Kits



FO12CB

Part Number	Description	Std. Pkg. Qty.	Std. Ctn. Qty.
Fiber Build Up Kits			
FO12CB	Build up 250µm fiber to 900µm loose buffered coating size; for twelve fibers.	1	1
FO6CB	Build up 250µm fiber to 900µm loose buffered coating size; for six fibers.	1	1
F250BT-C	Build-up tubing for 250µm cable, 2" length, pack of 100.	100	—

Fiber Connectors



FLCSMCXAQY



FSC2SCBU

Part Number	Description	Std. Pkg. Qty.	Std. Ctn. Qty.
OptiCam™ Pre-Polished Connectors			
FLCDMCAQY	LC duplex 50µm OM3/OM4 connector for 900µm, Aqua boot.	1	10
FLCSMCXAQY	LC simplex 50µm OM3/OM4 connector for 900µm, Aqua boot.	1	10
FLCSSCBUY	LC simplex 9µm OS2 singlemode connector for 900µm, Blue boot.	1	10
FLCDSCBUY	LC duplex 9µm OS2 singlemode connector for 900µm, Blue boot.	1	10
FSC2MCAQ	SC2 simplex 50µm OM3/OM4 connector for 900µm, Aqua boot .	1	10
FSC2SCBU	SC2 simplex 9µm OS2 singlemode connector for 900µm, Blue boot.	1	10

Fiber Optic Termination Tools



FOCTT2-BKIT2



FOCTT2-PKIT2

Part Number	Description	Std. Pkg. Qty.	Std. Ctn. Qty.
FOCTT2-KIT	Includes: batteries, case, launch cords and one cradle for each OptiCam® LC, SC2 and ST2 Connector.	1	—
FOCTT2-BKIT2	Opticam® Termination Tool 2 Termination Kit with beaver-tail style cleaver.	1	—
FOCTT2-PKIT2	Opticam® Termination Tool 2 Termination Kit with precision rotary-style cleaver.	1	—

Cabinets and Thermal Management



S-Type Cabinet



N-Type Cabinet



D-Type Cabinet

Net-Access™ S-Type Cabinets

Part Number	RU	Top Panel	Front Door	Rear Door	Side Panel	PDU Brackets	Application	Dimensions (mm)		
								Height	Width	Depth
S6212B	42	Cool Boot® Openings	Single Hinge Perforated	Split Perforated	Vertically Split	1 Set (SPDUBRK)	Server	2026	600	1070
S8212B	42							2026	800	1070
S6212BU	42						Server/ Switch	2026	600	1070
S7222BU	42							2026	700	1200

Net-Access™ N-Type Cabinets

Part Number	RU	Top Panel	Front Door	Rear Door	Side Panel	PDU Brackets	Application	Dimensions (mm)		
								Height	Width	Depth
N8512B	45	Cool Boot® Openings	Dual Hinge Perforated	Split Perforated	Vertically Split	—	Switch	2134	800	1070
N8522B	45							2134	800	1200

Net-Access™ Cabinet Accessories



NVPDUBE

Part Number	N-Type Compatibility	S-Type Compatibility	Description
SN25F	X	X	Finger kit (150mm deep) 42 – 45 RU cabinets.
NVPDUBE	X	—	PDU bracket – sold in pairs.
SN8VCM	X	X	Vertical cable management brackets – 800mm wide cabinet.

Net-Verse™ D-Type Cabinets

Part Number	RU	Top Panel	Front Door	Rear Door	Side Panel	PDU Brackets	Application	Dimensions (mm)		
								Height	Width	Depth
DN6212B	42	Brush Openings	Single Hinge Perforated	Split Perforated	Horizontally Split	Two Full Length	Server/ Switch	2045	600	1000
DN6222B	42							2045	600	1200
DN6512B	45							2178	600	1000
DN6522B	45							2178	600	1200
DN8212B	42							2045	800	1000
DN8222B	42							2045	800	1200
DN8512B	45							2178	800	1000
DN8522B	45							2178	800	1200

Net-Verse™ Cabinet Accessories



D12FBB, D15FBB

Part Number	RU	Depth of Cabinet	Description
D12FBB	42, 45	800	Cable management fingers with mounting brackets.
D15FBB	42, 45	800	Cable management fingers with mounting brackets.

Air Inlet Ducting and Air Sealing Accessories



CDE2



DIFBA2002S00S



CTGN3X5



TLBP1S-V

Part Number	Description
CDE2	Net-Direct™ Air Inlet Duct provides cold airflow directly into Cisco Nexus N2K-C2148T-1GE, N2K-C2248TP-1GE, and N2K-C2232PP-10GE fabric extenders and Cisco WS-C4948E-F, WS-C4948E-F-S, and WS-C4948E-F-E switch intakes from in-line. Optimized for use in server cabinets, 2 RU, Black, 1pc – no blanking panels.
DIFBA2002S00S	The Net-Direct™ Air Inlet Duct provides cold airflow directly into Cisco Nexus 9396 switch intakes from in-line. 2 RU, Black, 1pc – no blanking panels
CTGN3X5	Cool Boot® Cabinet Top Air Sealing Fitting for 3.5" x 5" Net-Access™ Cabinet opening.
CTGN6X6	Cool Boot® Cabinet Top Air Sealing Fitting for 6.5" x 6.5" Net-Access™ Cabinet opening.
TLBP1S-V	Tool-less blanking panel, 1 rack unit, cage nut holes.
FLBSIM-51	Blanking shade for 41 – 51 consecutive rack units on 19" std. rails, Black.

Pre-Configured Micro Data Center (MDC)



MDC79D

Part Number	Description	Std. Pkg. Qty.	Std. Ctn. Qty.
MDC79D	Single hinge perforated front door, split perforated rear doors, split side panels (2), 42 RU, network cabling, patch panels, cable management, grounding, casters, shock pallet and ramp. Color Black. Dimensions: 79.8" H x 27.6" W x 48.0" D (2026mm x 700mm x 1200mm).	1	—
MDC82N*	NEMA Type 12, 42 U, window front door, solid rear door, one solid side panel, one side panel modified for cooling options, network cabling, patch panels, cable management, grounding, and casters.	1	—

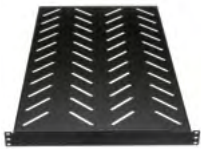
Racks



R2P

Part Number	Description	Std. Pkg. Qty.	Std. Ctn. Qty.
Racks			
R2P	2 post rack, 45 RU, with #12-24 threaded rails, RU spaces numbered bottom up.	1	1
R4P	4 post rack, 45 RU, 30" deep, with #12-24 threaded rails, RU spaces numbered bottom up, adjustable front and rear rails.	1	1
R4PCN	4 post rack, 45 RU, 30" deep, with cage nut rails, RU spaces numbered bottom up, adjustable front and rear rails.	1	—

Rack Accessories



RSHLF

Part Number	Description	Std. Pkg. Qty.	Std. Ctn. Qty.
RSHLF	1 RU 19"W x 30"D 4 post rack vented shelf, adjustable mounting along the depth of the shelf.	1	—
SRM19FM1	1 RU 19"W x 15"D 2 post rack front mount shelf.	1	—
DPFP1	1 RU 19"W horizontal rack filler panel.	1	10

Cable Managers



WMPVHC45E



PR2VD12



WMPSE



NMF2

Part Number	Description	Std. Pkg. Qty.	Std. Ctn. Qty.
Vertical Managers			
WMPV45E	NetRunner™ Vertical Cable Manager, front and rear, 45 RU, 4"W x 5"D front and rear channels, includes covers.	1	—
WMPVF45E	NetRunner™ Vertical Cable Manager, front only, 45 RU, 4"W x 5"D channel, includes covers.	1	—
WMPVHC45E	NetRunner™ Vertical Cable Manager, front and rear, 45 RU, 6"W x 6"D front and rear channels, includes covers.	1	—
PR2VD06	PatchRunner™ 2 Vertical Cable Manager, front and rear, 45 RU, 6"W x 20.7"D, includes two metal dual-hinged doors.	1	—
PR2VFD06	PatchRunner™ 2 Vertical Cable Manager, front only, 45 RU, 6"W x 20.7"D, includes one metal dual-hinged door.	1	—
PR2VD08	PatchRunner™ 2 Vertical Cable Manager, front and rear, 45 RU, 8"W x 20.7"D, includes two metal dual-hinged doors.	1	—
PR2VD12	PatchRunner™ 2 Vertical Cable Manager, front and rear, 45 RU, 12"W x 20.7"D, includes two metal dual-hinged doors.	1	—
Horizontal Managers			
WMPSE	PatchLink™ Horizontal Cable Manager with hinged cover, front and rear, 1 RU.	1	—
WMPFSE	PatchLink™ Horizontal Cable Manager with hinged cover, front only, 1 RU.	1	—
WMP1E	PatchLink™ Horizontal Cable Manager with hinged cover, front and rear, 2 RU.	1	—
WMPF1E	PatchLink™ Horizontal Cable Manager with hinged cover, front only, 2 RU.	1	—
NM2	NetManager™ High Capacity Horizontal Cable Manager with hinged cover, front and rear, 2 RU.	1	—
NMF2	NetManager™ High Capacity Horizontal Cable Manager with hinged cover, front only, 2 RU.	1	—

Power Distribution Units (PDUs)

SmartZone™ G5 Basic Power Distribution Units (PDUs)



Part Number	Form Factor	Input Current Per Phase	Input Phase	Input Plug Type	Outlet Count	Outlet Type	Output Voltage	Height (In.)	Width (In.)	Depth (In.)
P12B01M	1U	15	1	NEMA 5-15P	12	(12)5-20R	120	1.6	17.5	2.0
P12B19M	1U	20	1	NEMA 5-20P	12	(12)5-20R	120	1.6	17.5	2.0
P12B30M	1U	20	1	NEMA L5-20P	12	(12)5-20R	120	1.6	17.5	2.0
P12B47M	1U	30	1	NEMA L6-30P	12	(12)C13	208	1.7	17.5	7.8
P16B04M	0U HALF	15	1	NEMA 5-15P	16	(16)5-20R	120	32.2	2.0	2.1
P16B07M	0U HALF	20	1	NEMA 5-20P	16	(16)5-20R	120	32.2	2.0	2.1
P16B08M	0U HALF	20	1	NEMA L5-20P	16	(16)5-20R	120	32.2	2.0	2.1
P22B09M	0U HALF	30	1	NEMA L5-30P	22	(22)5-20R	120	32.2	2.0	2.1
P22B10M	0U HALF	20	1	NEMA L6-20P	22	(20)C13, (2)C19	208	32.2	2.0	2.1
P30B25M	0U MID	30	3	NEMA L21-30P	30	(24)C13, (3)C19, (3)5-20R	120, 208	58.7	2.0	2.1
P42B17M	0U MID	30	1	NEMA L6-30P	42	(36)C13, (6)C19	208	58.7	2.0	2.1

SmartZone™ G5 Intelligent Power Distribution Units (PDUs)



Part Number	Form Factor	Input Current Per Phase	Input Phase	Input Plug Type	Outlet Count	Outlet Type	Output Voltage	Height (In.)	Width (In.)	Depth (In.)
Monitored Input (MI) iPDUs										
P08D09M	1U	15	1	NEMA 5-15P	8	(8)5-20R	120	1.7	17.5	10.6
P16D22M	0U HALF	20	1	NEMA L5-20P	16	(16)5-20R	120	32.2	2.0	2.1
P24D07M	0U MID	30	1	NEMA L6-30P	24	(20)C13, (4)C19	208	58.7	2.0	2.1
P24D23M	0U MID	30	1	NEMA L5-30P	24	(24)5-20R	120	58.7	2.0	2.1
P24D24M	0U MID	20	1	NEMA L6-20P	24	(20)C13, (4)C19	208	58.7	2.0	2.1
P24D34M	0U FULL	60	3	IEC60309-460P9	24	(12)C13, (12)C19	208	68.9	2.0	2.1
P36D08M	0U FULL	30	3	NEMA L15-30P	36	(30)C13, (6)C19	208	68.9	2.0	2.1
P38D25M	0U FULL	30	1	NEMA L6-30P	38	(32)C13, (6)C19	208	68.9	2.0	2.1
P38D28M	0U FULL	30	3	NEMA L21-30P	38	(30)C13, (6)C19, (2)5-20R	208	68.9	2.0	2.1
P48D35M	0U FULL – 2 SIDED	60	3	IEC60309-460P9	48	(36)C13, 12(C19)	208	71.7	2.0	4.4

(continued on next page)

Power Distribution Units (PDUs)

SmartZone™ G5 Intelligent Power Distribution Units (PDUs) continued



P24E28M

Part Number	Form Factor	Input Current Per Phase	Input Phase	Input Plug Type	Outlet Count	Outlet Type	Output Voltage	Height (in.)	Width (in.)	Depth (in.)
Monitored Switched (MS) Power Distribution Units (PDUs)										
P16E19M	2U	30	1	NEMA L6-30P	16	(12)C13, 4(C19)	208	3.4	17.4	10.6
P24E28M	0U FULL	30	1	NEMA L6-30P	24	(20)C13, (4)C19	208	68.9	2.0	2.1
P36E35M	0U FULL	30	3	NEMA L21-30P	36	(30)C13, (6)C19	208	68.9	2.0	2.1
Monitored Per Outlet (MPO) Power Distribution Units (PDUs)										
P24F01M	0U FULL	30	1	NEMA L6-30P	24	(20)C13, (4)C19	208	68.9	2.0	2.1
Monitored and Switched Per Outlet (MSPO) Distribution Units (PDUs)										
P24G01M	0U FULL	30	1	NEMA L6-30P	24	(20)C13, (4)C19	208	68.9	2.0	2.1
P36G18M	0U FULL	30	1	NEMA L6-30P	36	(30)C13, (6)C19	208	68.9	2.0	2.1
P36G19M	0U FULL	30	3	NEMA L21-30P	36	(30)C13, (6)C19	208	68.9	2.0	2.1

Power Distribution Units (PDUs) Accessories



SmartZone™ G5 W-Lock and V-Lock Compatible Locking Power Cords

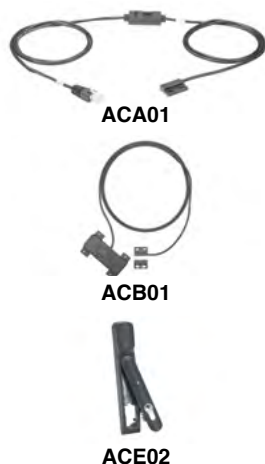
Part Number Qty. 1	Part Number Qty. 10	Description	Ratings	Gauge/Cross Section Area	Jacket	Connector Angle	Length (ft.)	Color
LPCA14	LPCA14X	IEC C14 to IEC C13	10A/250V	17AWG/ 1.0mm ²	SJT/H05VV-F	Straight	6*	Black**
LPCB14	LPCB14X	IEC C20 to IEC C19	16A/250V	15AWG/ 1.5mm ²	SJT/H05VV-F	Straight	6*	Black**

SmartZone™ G5 Environmental Sensors



Part Number	Description	Dimensions L x W x H (mm)	Length (m)	Std. Pkg. Qty.	Std. Ctn. Qty.
EA001	Temperature Sensor.	44 x 21 x 11	2	1	—
EC001	Three Temperature and Humidity Sensor.	44 x 21 x 11	2	1	—

SmartZone™ G5 Security Accessories



Part Number	Description	Dimensions L x W x H (mm)	Length (m)	Std. Pkg. Qty.	Std. Ctn. Qty.
ACA01	Door switch (magnetic 2 piece).	44 x 21 x 11 (29 x 19 x 7 for magnet)	2	1	—
ACB01	Access hub for handle (cold and hot aisle selectable).	95 x 37 x 29	2	1	—
ACE01	Swinghandle no card reader.	N/A	N/A	1	—
ACE02	Swing handle with card reader.	N/A	N/A	1	—
ACC01	Dry Contact Input	44 x 21 x 11	2	1	—
ACB02	Access Hub Harness Cold Aisle (ACE02).	N/A	3	1	—
ACB03	Access Hub Harness Hot Aisle (ACE02).	N/A	2.6	1	—

Industrial Network Uninterruptible Power Supply (UPS)



Part Number	Description	Std. Pkg. Qty.	Std. Ctn. Qty.
UPS00100DC	Uninterruptible power supply (UPS), 100 watt; no-battery, maintenance-free with remote management; 24 – 28 VDC in/out; wide operating temperature range: -40°C to +60°C; DIN rail mount.	1	—
UPS003LSM	UPS load sense module; optional accessory for use in dual, redundant power supply configurations to monitor load on primary supply.	1	—

Wyr-Grid® Overhead Cable Tray Routing System



Part Number	Description	Std. Pkg. Qty.	Std. Ctn. Qty.
Wyr-Grid® Pathway			
WG12BL10	12" wide x 118.35" (3006.2mm) long pathway section used to carry cables horizontally throughout the system.	10	—
Wyr-Grid® Sidewalls			
WGIBRC4BL	Wyr-Grid® 4" (102mm) high Snap-On Intersection Bend Radius Control provides 3" (76mm) bend radius control.	1	—
WGSW4BL	Wyr-Grid® 4" (102mm) high Snap-On Sidewalls.	1	40
Wyr-Grid® Splice Connectors			
WGINTSPLBL	Intersection splice connector quickly joins Wyr-Grid® Pathways at all intersections.	1	10
WGSPL1218BL	Straight splice connector quickly joins two 8" (203mm), 12" (305mm) or 18" (457mm) wide Wyr-Grid® Pathways together.	1	10
Wyr-Grid® Waterfalls			
WGBTMWFBL	Bottom waterfall provides 1.38" (35mm) bend radius control for cables transitioning down into the racks or cabinets from within the Wyr-Grid® Pathway.	1	10
WGSWF4BL	The side waterfall provides 3" (76mm) bend radius control for cables transitioning down into the racks or cabinets from the side of the Wyr-Grid® Pathway.	1	5
Wyr-Grid® Brackets			
WGTBS12BL	Bracket used to support 12" (305mm) wide Wyr-Grid® Pathway from the ceiling using a pair of 1/2" or 12mm threaded rod drops.	1	5
GWWMTB12BL	Bracket used to support the end of the 12" (305mm) Wyr-Grid® Pathway against the wall. Mounting hardware for attaching to wall not included.	1	5

Additional widths available, 8" (203mm), 18" (457mm), 24" (610mm), and 30" (762mm). Contact Panduit Customer Service for additional information or, www.panduit.com.
For pathway, order number of feet required, in multiples of standard 10' length increments.

J-Pro™ Cable Support System



Part Number	Description	Std. Pkg. Qty.	Std. Ctn. Qty.
Wall Mount			
JP75W-L20	Wall mount, one 1/4 (M6) mounting hole, 0.75 (19.0mm) maximum bundle capacity.	50	—
JP75DW-L20	Hook with clip for use with #12 wire and threaded rod up to 3/8 (9.5mm) in diameter or 1/8 – 1/4 (3.2mm – 6.4mm), 0.75 (19.0mm) maximum bundle capacity.	50	—
JP131W-L20	Wall mount, one 1/4 (M6) mounting hole, 1.31 (33.3 mm) maximum bundle capacity.	50	—
JP131DW-L20	Hook with clip for use with #12 wire and threaded rod up to 3/8 (9.5mm) in diameter or 1/8 – 1/4 (3.2mm – 6.4mm), 1.31 (33.3 mm) maximum bundle capacity.	50	—
JP2W-L20	Wall mount, one 1/4 (M6) mounting hole, 2.00 (50.8mm) maximum bundle capacity.	50	—
JP2DW-L20	Hook with clip for use with #12 wire and threaded rod up to 3/8 (9.5mm) in diameter or 1/8 – 1/4 (3.2mm – 6.4mm), 2.00 (50.8mm) maximum bundle capacity.	50	—
JP4W-X20	Wall mount, one 1/4 (M6) mounting hole, 4.00 (101.6mm) maximum bundle capacity.	10	—
JP4DW-X20	Hook with clip for use with #12 wire and threaded rod up to 3/8 (9.5mm) in diameter or 1/8 – 1/4 (3.2mm – 6.4mm), 4.00 (101.6mm) maximum bundle capacity.	10	—

Additional mount and color options available. Contact Panduit Customer Service or visit www.panduit.com for further information.

FiberRunner® 6x4 Cable Routing System



Part Number	Description	Std. Pkg. Qty.	Std. Ctn. Qty.
FiberRunner® 6" x 4" (150mm x 100mm) Channel and Cover			
FR6X4YL6	Channel.	6'	36'
FRHC6YL6	Hinged, snap-on channel cover.	6'	36'
FRSHC6YL6	Split hinged snap-on channel cover..	6'	36'
FiberRunner® 6" x 4" (150mm x 100mm) Fittings			
FRBC6X4YL	QuikLock™ Coupler.	1	5
FREC6X4YL	End cap.	1	5
FRFVC6X4YL	4-way cross fitting.	1	5
FRFVCSC6YL	4-way cross split cover.	1	5
FRH456X4YL	Horizontal 45° angle fitting.	1	5
FRH45SC6YL	Horizontal 45° angle split cover.	1	5
FRIV456X4YL	Inside Vertical 45° fitting and cover.	1	5
FRIVRA6X4YL	Inside Vertical 90° fitting and cover.	1	5
FROV456X4YL	Outside Vertical 45° angle fitting.	1	5
FROV45SC6YL	Outside Vertical 45° angle split cover.	1	5
FROVRA6X4YL	Outside Vertical 90° angle fitting.	1	5
FROVRASC6YL	Outside Vertical 90° angle split cover.	1	5
FRRA6X4YL	Horizontal right angle fitting.	1	5
FRRASC6YL	Horizontal right angle split cover.	1	5
FRT6X4YL	Horizontal tee fitting.	1	5
FRTSC6YL	Horizontal tee split cover.	1	5
FRRF64YL	Reducer from 6" x 4" FiberRunner® to 4" x 4" Fiber-Duct™ Fitting and Cover.	1	5
FRADC6X4YL	Adapter from 6" x 4" FiberRunner® to 6" x 4" FiberGuide*.	1	5
FiberRunner® Spillouts			
FRSPJ2X2YL	Assembles onto 4x4, 6x4, 12x4, or 24x4 FiberRunner® Channel, spilling over the side into a 2x2 vertical exit.	1	—
FRSPJC26YL	Used to fully enclose 6x4 channel in conjunction with the spill-over junction FRSPJ2X2YL.	1	5
FRVT6X4YL	Vertical tee with hinged door.	1	5
FIDT4X4BL	Used to route cable into one or two pieces of 1.5" (38mm) diameter split corrugated tubing. Black color only.	1	5
FTR4X4YL	3-sided vertical tee trumpet spillout.	1	5
FiberRunner® Brackets			
F2PCLB58	Two-piece bracket attaches to 3/8" (9.5mm) wide x 1 1/2" (38.1mm) or 3/8" (9.5mm) wide x 2" (50.8mm) ladder rack rail.	1	10
FR6TRBN58	New 5/8" threaded rod QuikLock™ Bracket for 4" x 4" and 6" x 4" FiberRunner®.	1	10
FRTBWG12BL	FiberRunner® Threaded Rod Trapeze Bracket for Wyr-Grid® 12" width.	1	10

Additional colors and sizes available, 24x4, 12x4, 4x4, and 2x2.
 Contact Panduit Customer Service for additional information or www.panduit.com.
 For channel and channel cover, order number of feet required, in multiples of standard 6' length increments.

Zone Enclosures



PZICEA



PZWMC12W

Part Number	Description	Std. Pkg. Qty.	Std. Ctn. Qty.
PZICEA	PanZone [®] Active In-Ceiling Enclosure with hinged door gas-assist air cylinders. Accepts up to 2 RU of active equipment and up to 6 RU of passive equipment, includes mounting brackets and integrated horizontal slack manager, AC power provisions, fan assembly, air dam, and electrical junction box.	1	—
PZWMC12W	PanZone [®] Wall Mount Cabinet with windowed front door, 12 RU, Black.	1	—
PZWMC18W	PanZone [®] Wall Mount Cabinet with windowed front door, 18 RU, Black.	1	—
PZWMC26W	PanZone [®] Wall Mount Cabinet with windowed front door, 26 RU, Black.	1	—

Universal Network Zone System



Z23U



Z22U

Part Number	Description	Std. Pkg. Qty.	Std. Ctn. Qty.
Z23U-S25	24" x 36" mild steel enclosure, for two industrial switches, includes (16) Category 6 UTP copper patch cords and jacks, (4) MM LC fiber uplink patch cords with (6) adaptors and redundant power supplies, maintenance-free UPS.	1	—
Z23U-S25S	24" x 36" mild steel enclosure, for two industrial switches, includes (16) Category 6A STP copper patch cords and jacks, (4) MM LC fiber uplink patch cords with (6) adaptors and redundant power supplies, maintenance-free UPS.	1	—
Z23U-S24	24" x 36" mild steel enclosure, for two industrial switches, includes (16) Category 6 UTP copper patch cords and jacks, (4) MM LC fiber uplink patch cords with (6) adaptors and redundant power supplies.	1	—
Z23U-S24S	24" x 36" mild steel enclosure, for two industrial switches, includes (16) Category 6A STP copper patch cords and jacks, (4) MM LC fiber uplink patch cords with (6) adaptors and redundant power supplies.	1	—
Z22U-S15	24" x 24" mild steel enclosure, for one industrial switch, includes (8) Category 6 UTP copper patch cords and jacks, (2) MM LC fiber uplink patch cords with (6) adaptors and redundant power supplies, maintenance-free UPS.	1	—
Z22U-S15S	24" x 24" mild steel enclosure, for one industrial switch, includes (8) Category 6A STP copper patch cords and jacks, (2) MM LC fiber uplink patch cords with (6) adaptors and redundant power supplies, maintenance-free UPS.	1	—
Z22U-S14	24" x 24" mild steel enclosure, for one industrial switch, includes (8) Category 6 UTP copper patch cords and jacks, (2) MM LC fiber uplink patch cords with (6) adaptors and redundant power supplies.	1	—
Z22U-S14S	24" x 24" mild steel enclosure, for one industrial switch, includes (8) Category 6A STP copper patch cords and jacks, (2) MM LC fiber uplink patch cords with (6) adaptors and redundant power supplies.	1	—

Pre-Configured Network Zone Systems



Z23C-S



Z22C-S

Part Number	Description	Std. Pkg. Qty.	Std. Ctn. Qty.
Z23C-S	24" x 36" mild steel enclosure, for two industrial switches, includes (16) Category 6 UTP copper patch cords and jacks, (4) MM LC fiber patch cords with (6) adaptors, backplane and cable management.	1	—
Z22C-S	24" x 24" mild steel enclosure, for two industrial switches, includes (8) Category 6 UTP copper patch cords and jacks, (2) MM LC fiber patch cords with 6 LC adaptors, backplane and cable management.	1	—

Pre-Configured Industrial Distribution Frame (IDF)



ZDF48-RA



ZDF242430

Part Number	Description	Std. Pkg. Qty.	Std. Ctn. Qty.
ZDF48-RA	Mild steel enclosure; 26U; for two access and two distribution switches; pre-installed with front and rear rack angles, fiber enclosure, 48-port patch panel, cable management, grounding, 10" DIN rail, (2) fiber spools, (2) back panels, (2) ESD ports, 30" length of duct, (2) duplex power receptacles, cage nuts, labeling for cable routing, strain relief bars, (4) power cables; includes ESD wrist strap, (1) hook and loop, (1) grounding cable, mounting hardware, conduit schedule and ingress template.	1	—
ZDF242430	Mild steel enclosure, 12U, for two access or two distribution switches; pre-installed with front and rear rack angles, fiber enclosure, 48-port patch panel, grounding, 10" DIN rail, (2) fiber spools, (1) back panel, (2) ESD ports, 30" length of duct, cage nuts, labeling for cable routing, strain relief bars; includes ESD wrist strap, (1) hook and loop, (1) grounding cable, mounting hardware, conduit schedule and ingress template.	1	—

IntraVUE™ Edge



PNPIV

Part Number	Description	Std. Pkg. Qty.	Std. Ctn. Qty.
PNPIV	IntraVUE™ Edge, 1024 node, permanently licensed appliance.	1	—

Grounding



GB4B0624TPI-1



RGCBNJ660PY



RGRKCBNJY



RGTBSG-C

TRBSK



UGB2/0-414-12



UGB-B-SO



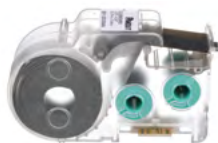
UGB-IN-SO

Part Number	Description	Std. Pkg. Qty.	Std. Ctn. Qty.
CNBK	Bonding Cage Nut Kit.	1	—
GB2B0304TPI-1	Grounding busbar, BICSI 1/4" x 2" x 10" (6.4mm x 51mm x 254mm).	1	—
GB2B0306TPI-1	Grounding busbar, BICSI 1/4" x 2" x 12" (6.4mm x 51mm x 305mm).	1	—
GB4B0612TPI-1	Grounding busbar, BICSI 1/4" x 4" x 12" (6.4mm x 102mm x 305mm).	1	—
GB4B0624TPI-1	Grounding busbar, BICSI 1/4" x 4" x 20" (6.4mm x 102mm x 508mm).	1	—
RGRB19CN	Grounding busbar; 19" (483mm) length; tin-plated copper; twenty holes arranged for flexibility in mounting with twenty #12-24 x 1/2" hex head screws installed; mounting hole sets have 5/8" (15.9mm) spacing; provided with two cage nut bonding studs and four #12-24 bonding nuts.	1	—
ACG24K	#6 AWG (16mm ²) jumper for armored cable diameter up to 0.84" (21.3mm); 24" (609.6mm) length; factory terminated on one end with LCC6 two-hole copper compression lug and the other end with grounding terminal; provided with two each #12-24 and M6 thread-forming screws and a Black polypropylene terminal cover.	1	—
RGREJ696Y	Grounding jumper; #6 AWG (16mm ²); 96" (2.44m) length; one end factory terminated to lug; provided with 0.16 oz. (5cc) of antioxidant and two each #12-24 x 1/2", M6 x 12mm, #10-32 x 1/2" and M5 x 12mm thread-forming screws.	1	—
RGCBNJ660P22	Jumper kits, Common Bonding Network (CBN), #6 AWG (16mm ²) jumper, 60" (1.52m) length.	1	—
RGCBNJ660PY	Jumper kits, Common Bonding Network (CBN), #6 AWG (16mm ²) jumper, 60" (1.52m) length.	1	—
RGESD2B-1	Two-hole ESD port with 5/8" hole spacing; provided with an ESD protection sticker, 0.16 oz. (5cc) of antioxidant, two cage nut bonding studs and two #12-24 bonding nuts.	1	20
RGESDWS	Adjustable fabric ESD wrist strap with 6' coil cord, banana plug, 1 meg ohm resistor and 4mm snap.	1	—
RGRB19U	Grounding busbar kits, 19" (483mm) length, 20 mounting holes, 5/8" (15.9mm) hole spacing.	1	—
RGRB19Y	Grounding busbar kits, 19" (483mm) length, 14 mounting holes, 1/2" (12.7mm) hole spacing.	1	—
RGRKCBNJY	Jumper kit, rack grounding retrofit equipment.	1	—
RGS134-1Y	Grounding strip kits, one, 78.65" (2m) x 0.67" (17mm) x 0.05"(1.27mm) strip.	1	—
RGTBSG-C	Green thread-forming bonding screw, #12-24 x 1/2".	100	—
TRBSK	Bonding stud kit for threaded #12-24 rail fasteners.	1	4
UGB2/0-414-12	Universal ground bar accepts #14 - #4 AWG wire in 12 wire ports and up to a 2/0 AWG main equipment grounding conductor with a compression or mechanical connector; 8.28" (210.3mm) length, 0.62" (15.7mm) width, 0.48" (12.2mm) height.	1	10
UGB2/0-414-6	Universal ground bar accepts #14 - #4 AWG wire in 6 wire ports and up to a 2/0 AWG main equipment grounding conductor with a compression or mechanical connector, 4.92" (125mm) length, 0.62" (15.7mm) width, 0.48" (12.2mm) height.	1	10
UGB-B-SO	Universal ground bar bonding stand-offs; includes two stand-offs and hardware; 2.34" (59.3mm) length, 0.63" (15.9mm) width, 0.75" (19.1mm) height.	1	10
UGB-IN-SO	Universal ground bar isolation stand-offs; includes two stand-offs and hardware; 1.57" (40mm) length, 0.59" (15.0mm) width, 0.98" (25.0mm) height.	1	10

Labeling



LS8EQ-KIT-ACS



C125X030FJC

Part Number	Description	Std. Pkg. Qty.	Std. Ctn. Qty.
LS8EQ-KIT-ACS	Panduit® PanTher™ LS8EQ Hand-Held Thermal Transfer Printer with QWERTY keypad kit contains the LS8E-ACS 120 VAC power adapter for North America along with the hand-held printer, PANTHERLINK software, one cassette of S100X150VAC self-laminating labels, six AA alkaline batteries, the LS8-CASE rigid carrying case, the LS8-PCKIT USB cable and PC interface software, the LS8-IB protective impact bumper, the LS8-WS wrist strap, a quick reference card, and an operator's manual.	1	1
NWSLC-2Y	Yellow cable identification sleeve for 2mm simplex fiber cable, 1" length.	100	1000
R100X125V1T	Turn-Tell® Thermal Transfer Vinyl Label, 1.00" W X 1.25" H, 0.38" print-on area, Clear/White, 3" Core 12 – 10 AWG wire/cable, Category 3 UTP cable.	2500	10000
S100X150YAJ	Laser/inkjet, self-laminating label, polyester, 1.00" W x 1.50" L, 0.50" print-on area, Clear/White.	1	10
S100X150VAC	P1 cassette, self-laminating label, vinyl, 1.00" W x 1.50" H, 0.50" print-on area, Clear/White.	1	10
S100X150VATY	Thermal transfer, self-laminating label, vinyl, 1.00" W x 1.50" H, 0.50" print-on area, Clear/White.	5000	—
C125X030FJC	Network label, P1 cassette, 1.25" W x 0.30" H, polyolefin, White, 200 labels/cassette, 1 pc.	1	10
C125X030FJJ	Network label, 2-port identifier, 1.25" W x 0.30" H, polyolefin, White, 2500 labels/package, 2500 pcs.	1	10
C252X030FJC	Network label, P1 cassette, 2.52" W x 0.30" H, polyolefin, White, 125 labels/cassette, 1 pc.	1	10
C252X030FJJ	Network label, 4-port identifier, 2.52" W x 0.30" H, polyolefin, White, 1000 labels/package, 1000 pcs.	1	10
PCMB-3	Preprinted wire marker books containing wire labels.	1	10

Cable Ties and Bundling



HLM-15R0



HLS-15R0



HLT2I-X0

ERT2M-C20

Part Number	Description	Std. Pkg. Qty.	Std. Ctn. Qty.
HLM-15R0	Hook & loop roll, 15' L(4.6m), 0.33" W (8.4mm), Black.	1	10
HLS-75R0	Hook & loop roll, 75' L (22.9m), 0.75" W (19.1mm), Black.	1	10
HLS-15R0	Hook & loop roll, 15' L (4.6m), 0.75" W (19.1mm), Black.	1	10
HLT2I-X0	Hook & loop tie, loop style, 8.0" L (203mm), 0.50" W (12.7mm), Black.	10	100
TTR-35RX0	Hook & loop roll, 10 roll-pack, low profile, 35' L (10.7m), 0.75" W (19.1mm), Black.	1	10
ERT2M-C20	Elastomeric cable ties, Miniature cross section, 8.5L (216mm), tensile strength: 80, bundles up to 2.4 (60mm), Black.	—	—

Stainless Steel Cable Ties



MLT2S-CP

Part Number	Description	Std. Pkg. Qty.	Std. Ctn. Qty.
MLT2S-CP	Stainless steel self-locking head design cable ties, 304 stainless steel, max bundle diameter: 2 in., 7.9 in. Tensile strength: 890.	100	500

Cable Accessories



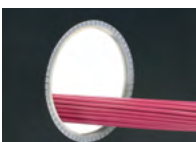
ABMM-A-D



ABMT-A-C
ABMT-A-C20



CLT150F-X4



GEE99F-A-C

Part Number	Description	Std. Pkg. Qty.	Std. Ctn. Qty.
ABMM-A-D	4-way adhesive backed cable tie mount, mounted with rubber adhesive tape. 0.75" long x 0.75" wide (19.1 x 19.1mm), White.	500	5000
ABM2S-A-D	4-way adhesive backed cable tie mount, mounted with rubber adhesive tape. 1" long x 1" wide (25.4 x 25.4mm), White.	500	5000
ABMT-A-C	Cable tie mount for use with HLT/HLS Tak-Ty® Hook & Loop Cable Ties, mounted with a rubber adhesive tape. 1.12" long x 1.12" wide (28.5 x 28.5mm). Natural.	100	1000
ABMT-A-C20	Cable tie mount for use with HLT/HLS Tak-Ty® Hook & Loop Cable Ties, mounted with a rubber adhesive tape. 1.12" long x 1.12" wide (28.5 x 28.5mm). Black.	100	1000
BEC38-A-L	Adhesive backed bevel entry clip, 0.38" (9.7mm) bundle, Natural.	50	500
ACC19-A-C	Adhesive backed cord clip, 0.19" (4.8mm) bundle, Natural.	100	1000
CLT150F-X4	Corrugated loom tubing slit wall measures 1.50" (38.1mm) x 10' (3.0m), Yellow.	1	—
GEE99F-A-C	Slotted grommet edging with adhesive lined, 0.099" thickness, Natural.	1	—

Security Devices



PSL-DCPLE



PSL-DCJB



PSL-LCAB



PSL-8



SKUSBA-V

Part Number	Description	Std. Pkg. Qty.	Std. Ctn. Qty.
-------------	-------------	----------------	----------------

RJ45 Lock-in Devices

PSL-DCPLE	RJ45 plug lock-in device, ten devices (Red) and one installation/ removal tool (Black).	1	100
PSL-DCPLRE	Recessed RJ45 plug lock-in device, ten devices (Red) and one installation/removal tool (Black).	1	20

RJ45 Block-out Devices

PSL-DCJB-BL	Jack module block-out device, ten block-outs (Black) and one removal tool (Black).	1	20
PSL-DCJB	Jack module block-out device, ten block-outs (Blue) and one removal tool (Black).	1	20
PSL-DCJB-C	Jack module block-out device, ten block-outs (Red) and one removal tool (Black).	1	100

LC Adapter Block-out Device

PSL-LCAB	LC duplex adapter block out device, ten devices and one removal tool.	1	20
----------	---	---	----

Lockout Tagout Devices

PSL-CBNT	"No Tool" universal circuit breaker lockout.	1	10
PSL-8	Safety lockout padlock non-conductive padlock, 1.58" x 1.77" body, Red.	1	6

SmartKeeper Network Security Devices

SKMKEY	SmartKeeper master key.	10	500
SKUSBA-V	SmartKeeper USB Type A blockout device.	5	250
SKRJ45RD-X	SmartKeeper RJ45 blockout device.	10	500
SKUSBC	SmartKeeper USB Type C blockout device.	1	50

Tools



EGJT-1



TGJT



GS4MT-E

Part Number	Description	Std. Pkg. Qty.	Std. Ctn. Qty.
EGJT-1	TG jack module and field term plug termination tool.	1	—
TGJT	TG jack termination tool, for high-volume installations.	1	—
CJAST	Copper cable jacket stripper.	1	1
CWST	Copper wire snips.	1	1
PDT110	110 punchdown tool.	1	1
CBOT24K	Cable bundle organizing tool.	1	10
GS4MT-E	Ergonomic, stainless steel cable tie installation tool.	1	—



PANDUIT[®]

Panduit Corp.
World Headquarters
Tinley Park, IL 60487

800.777.3300

www.panduit.com

[< Previous Page](#) | [Table of Contents](#)