

PANDUIT®

Industrial Electrical Solutions Guide



From Breaking Ground to Routine Maintenance and Repair Panduit Products Impact Your Entire Project Lifecycle

Partner with a company committed to meeting the daily challenges you face. Panduit offers a full solution of over 30,000 readily available parts – from cable ties to power connectors, terminals to identification – Panduit products are engineered for all aspects of designing, installing and maintaining infrastructures within heavy-duty industrial environments.

Productivity Reduce costs and meet deadlines with products and tools engineered to improve efficiency

Reliability Ensure performance and design consistency of products that are vital to the success of the job

Safety Protect personnel, equipment and infrastructure with product systems that meet/exceed industry standards





Applications and Market Solutions

OG

Oil and Gas:

The world's appetite for energy grows every day, and oil and gas are still the best options for meeting global demand. Faced with the need to explore in challenging locations, integrate new oil sands and shale capabilities, meet updated safety protocols, and identify new technologies to handle remote environments, energy producers are looking for partners who can help them keep up with changing business conditions and goals.

SH

Shipbuilding:

Shipbuilders focusing on ultimate reliability and safety while facing constant cost containment pressures, are looking into ways to increase productivity, minimize unscheduled maintenance, extend global availability and lower overhead expenses.

MM

Mining and Minerals:

As the global demand on natural resources continues to increase, efficiency and productivity requirements are pushing all mining systems and components to the limit. Site and operator safety are also extremely important as exposure to harsh chemicals, abrasive environments, and extreme temperature conditions are consistently present in this hectic environment.

FB

Food and Beverage:

Food and beverage manufacturers are faced with countless product safety, quality and manufacturing challenges. Maximizing productivity while reducing downtime requires a robust integrated electrical infrastructure that can deliver optimum productivity, reliability and profitability.

PP

Pulp and Paper:

From sawmill operations through the manufacturing of the final wood and paper, the Pulp, Paper & Wood industry comprises over 3,500 operational plants worldwide. The Pulping process occurs in a harsh environment and is exposed to high cooking temperatures and a variety of chemicals that require high quality of maintenance, repair and operation products to protect people and infrastructure to ultimately eliminate downtime and improve productivity.

WW

Water/Wastewater:

Water treatment facilities are critical for maintaining public sanitation and a healthy environment. Whether the facility treats industrial and residential wastewater to remove impurities, or treats fresh water for consumption, these facilities rely on robust solutions for dependable continuous operation within harsh environments.

** Icons within the pages signifies that products are used heavily within this vertical market.

The Power of Panduit

Panduit offers a comprehensive line of power and grounding products. These products will maintain the quality that Panduit is known for while providing the ultimate productivity, reliability, and safety.



With a comprehensive line of power and grounding solutions, we've got you covered from the ground up.

Structure Ground
Compression
Grounding

Mechanical
Grounding

Blackfin Power
and Grounding
Installation Tooling

PanLug
Compression
Connectors

Mechanical
Connector

Flexible
Braid

Heat
Shrink

Oxide
Inhibitor

Cable
Ties

Silicon Bronze
and Stainless Steel
Hardware

BusBar

GTC Series Cable
Clamp

Cable Tray Bonding Clamps

- Listed under UL 467 and CSA 22.2 No. 41. for Grounding Application
- Incorporates a ribbed bolt that holds its place during 1-wrench installation
- Tin-plated to inhibit corrosive effects and improve termination quality of dissimilar metals
- Clear product markings are convenient for ensuring proper installation
- Direct Burial versions include customized hardware for increased strength and corrosion resistance over the competition



GPL Series

- The versatile Panduit collection of grounding mechanical connectors includes access floor grounding clamps, flat surface ground clamps, 1 stud hole lugs, U-bolt style ground clamps, water pipe ground clamps, ground rod clamps, service post connectors, and universal beam grounding clamps, all made from high-strength metals for long-term durability
- Listed to UL 467 and CSA 22.2 No. 41.
- Reliability vibration testing based on MIL-STD-202g (Method 201A)
- Tin-plated to inhibit corrosive effects and improve termination quality of dissimilar metals





Service Post Connector, Type SP1 and SP2

- For grounding two copper code conductors to steel structures, busbars, or transformers or for tapping from busbar with hexnut and washer
- Made from high copper content, hard drawn copper rod provides high strength
- Offered with standard and long stud lengths to accommodate a variety of mounting applications
- Wire range-taking capability minimizes inventory requirements
- True hex design for body and nut hex provide correct fit with socket, box, or open end wrenches resulting in proper torquing of electrical connection
- Pressure bar provides secure connection on a full range of conductor combinations used with each connector providing premium wire pull-out strength



PanLug Compression

- The substantial offering of Panduit lugs covers most configurations of hole, barrel, and tongue. Made from high-strength electrolytic copper to provide premium electrical and mechanical performance, each lug can take a wide range of wires, minimizing inventory requirements



StructuredGround™ Compression Grounding

- The Panduit® StructuredGround™ Direct Burial Compression Grounding System provides the highest performance and most reliable compression connection in the industry. This system offers the speed and safety of a compression connection, while complying with the industry requirements of IEEE Std. 837. The fully inspectable system that is UL 467 Listed and CSA 22.2 Certified, ensures that the installed product operates safely. Wide range-taking and universal designs provide installation flexibility with a minimum number of parts, reducing procurement and inventory costs. Innovative features assure a high quality bond, reducing labor costs and improving crimp quality



BlackFin™ BlackFin Tooling:

- Panduit features new battery-powered crimping tools that are the first in the industry to meet Occupational Safety and Health Administration (OSHA) and international safety standards for battery-operated hand tools. Workers have a right to a safe workplace. If you are an employer responsible for the safety and well-being of your employees, you have a responsibility to ensure your employees have a safe work environment, which extends to the tools you use on the job



PanLug Compression Lugs and Splices

Proven Reliability for Mission Critical Applications:

- Regulatory Standards Compliant: Meets UL, CSA, IEC, ABS, and NEBS Level 3
- Enhance Workplace Safety: Protects personnel and equipment throughout the lifecycle with power connections and cable management that are easy to use, install, and maintain safety
- Engineered for Maximum Reliability and Extended Service Life: Provides superior electrical performance in harsh environmental applications



One Hole Barrel:

Lowest cost connector option can be used in space constrained applications



Standard Barrel:

- Code: LCA Series
- Flex: LCAX Series
- Flex Flared: LKAN Series
- Metric: LCMA Series
- Aluminum: LAA Series

Long Barrel:

- Code: LCB Series
- Flex: LCBX Series
- Metric: LCMB Series

Two Hole Barrel:

Two stud holes provides anti-rotation feature and maximizes electrical conductivity



Standard Barrel:

- Code: LCD Series
- Flex: LCDX Series
- Metric: LCMD Series
- Aluminum: LAB Series

Long Barrel:

- Code: LCC Series
- Flex: LCCX Series
- Metric: LCMC Series

Butt Splices:

Facilitate joining of wires to provide a continuous length of conductor



Standard Barrel:

- Code: SCS Series
- Metric: SCMS Series

Short Barrel: SCSS Series

Long Barrel: SCL Series

Aluminum: SA Series

Splitbolts:

Wide range-taking capability minimizes inventory requirements



Copper: SBC Series

Tin Plated: SBCT Series

Aluminum: SBA Series



BlackFin Hydraulic Installation Tools:



Tested by CSA to Meet OSHA safety requirements.

CT-3001/CCP

Crimps copper lugs up to 600 kcmil and aluminum lugs up to 350 kcmil, cuts cable up to 1" dia. and rod and punches holes in sheet metal. Tool crimp history and maintenance log recorded using CT-USB device and FINS software.



CT-3980 6.7 Ton Dieless Crimping Tool

Crimps copper lugs up to 600 kcmil and aluminum lugs up to 350 kcmil. Tool crimp history and maintenance log recorded using T-USB device and FINS software.





Multi-tap Connectors:

Flexible design can be used as a tap, splice, or dead end connector, eliminates need for insulating tape or heat shrink



Dual Sided: PCSB* Series

Single Sided: PCSB*S* Series

In-line splicer reducer: PISR* Series

With Mounting Holes

Dual Sided: PCSBMT* Series

Single Sided: PCSBMT*S Series

Aluminum Mechanical Lugs:

Dual rated for use with aluminum or copper wire, range taking, reusable, install with common tools



Single barrel lugs: LAMA*, LAMB* Series

Two barrel lugs: LAM2* Series

Three barrel lugs: LAM3* Series

Four barrel lugs: LAM4* Series

Splicer - Reducers: SR* Series

Copper Mechanical Lugs:

Install with common tools, range taking and re-usable



Heavy Duty Cast Copper Lugs and Splices

1-Hole Lugs:

Barrel Post: ML*-*Y Series

Straight Tongue: PNL* Series

Internal Pressure Plate: HL* Series

2-Hole Lugs:

Straight Tongue: HL-2* Series

Two Barrel: H2L*-*2N* Series

Splices:

Internal Pressure Plate: HC* Series

Economical Stamped and Formed Copper Lugs



1-Hole Lugs:

Straight Fixed Tongue: CXS* Series

Straight Floating Tongue: CS* Series

Offset Floating Tongue: CB* Series

2-Hole Lugs:

Straight Floating Tongue: CD*Series

Offset Floating Tongue: CO* Series



BlackFin Hydraulic Installation Tools:



Tested by CSA to Meet OSHA safety requirements.

CT-2980/ST 6.2 Ton Dieless Crimping Tool

Crimps copper lugs up to 750 kcmil with wire range taking capability and aluminum lugs up to 500 kcmil. Download tool crimp history and maintenance log using CT-USB device and FINS software.



*Signifies different lengths and package size options. Entering * in the part number on www.panduit.com will give you different size options.

Grounding Connectors

StructuredGround™ Direct Burial Compression Grounding System:

- Provides highest performance and most reliable compression connection in the industry. Offers the speed and safety of a compression connection while meeting IEEE Std. 837; UL 467 Listed for grounding and bonding; suitable for direct burial; c UL us Listed for use in the U.S. and Canada

Mechanical Grounding Connectors:

- Designed for easy installation – no special tools requires; UL 467 Listed for grounding and bonding; direct burial rated where applicable



E Style Grounding Connectors:

For connecting: conductor to conductor, conductor to rebar, and conductor to ground rod applications. Meets IEEE837-2014 requirements (except GCE500-500). UL Listed for direct burial grounding applications in the U.S. and Canada.



GCE* Series

Universal Beam Grounding Clamp:

Bonds structural steel to grounding conductor system: provides a mounting pad suitable for a two-hole compression lug



GUBC500-6

Bronze Ground Clamps:

For grounding copper code conductor to water pipe or iron pipe (IPS)

GPC* Series



Direct Burial Rated with Phos bronze hardware: GPC*-*D* Series

Ground Hub: GHC* Series

C Style Grounding Connectors:

For connecting: conductor to conductor and conductor to ground rod applications UL Listed for Direct Burial Grounding and voltage applications up to 35 KV in the U.S. and Canada



CTAPR Series

Grounding Plate Connector:

Allows bonds through concrete

GPC4H250-2



Grounding Cross Connectors:

For connecting: conductor to conductor, conductor to rebar, and conductor ground rod applications

GCC* Series




Aluminum Ground Clamp:

Dual-rated for grounding aluminum or copper code conductors to copper water pipe, galvanized pipe, or steel conduit

GC* Series



Hydraulic Installation Tools:  Tested by CSA to Meet OSHA safety requirements.

CT-2931/ST 12 Ton Battery Powered Crimping Tool

Crimps GCE/GCC connectors, copper lugs up to 750 kcmil and aluminum lugs up to 600 kcmil. Download tool crimp history and maintenance log using CT-USB device and FINS software.





Bronze Service Post Mechanical Grounding Connectors:

For grounding copper code conductors to steel structures, busbars, or transformers, direct burial rated



Male Stud:

One Conductor: SP1* Series

Two Conductor: SP2* Series

Female Thread:

One Conductor: SPF1* Series

Two Conductor: SPF2* Series

Bronze Ground Rod Clamp:

For grounding copper conductor parallel to ground rods, direct burial rated

Standard Duty: GRC* Series

Heavy Duty: GRCH* Series



Lay-in Lugs:

For quick installation of a continuous grounding conductor

Tin Plated Aluminum: LIAS* and LIAC* Series

Direct Burial Rated: LICC4* Series (copper body)



Bronze Grounding Clamp, U-Bolt style:

For grounding copper code conductors parallel to a rod, tube, or pipe, direct burial rated

One Conductor: GPL* Series

Two Conductor: GU* Series

Three Conductor: GPC3250-38-X

Two Conductor

(perpendicular to rod, tube or pipe):

GPC2* Series



Bronze Ground Clamp for Flat Surfaces:

For grounding copper code conductor to flat surfaces, direct burial rated

GM* Series

- incorporates spacer plate to separate conductor from mounting surface

GMS* Series

GBC2250-12-X

- used to ground two copper code conductors to flat surfaces.

GTC and GTCDB Cable Tray Bonding Clamps

- Used for grounding cable tray for above grade or direct burial applications



*Signifies different lengths and package size options.

Entering * in the part number on www.panduit.com will give you different size options.

Stainless Steel

When strength, vibration, radiation, weathering, corrosion and temperature extremes are a factor, the Pan-Steel® System provides strong, reliable solutions for use in indoor, outdoor, and direct burial applications.

- Improved productivity and worker safety for bundling, fastening, and identification in harsh environments
- Meets and exceeds the most stringent industry standards



Stainless Steel:

Delivers strength, long life and resistance to chemicals, vibration, radiation, and weathering

316 Stainless Steel: MLT***-**316 Series

Nylon 11 Selectively Coated: MLTC**-*316

Aluminum: MLT**-LPAL



OG MM

Coated Stainless Steel Cable Ties:

Superior corrosion resistance providing maximum performance, longer service life and improved reliability

MLTFC* Series

- Variety of sizes and colors available in AISI 316 stainless steel



Polyester Coated Stainless Steel: MLTFC**-*316

Stainless Steel Strapping:

Ultimate solution for mechanical fastening applications. The buckle design and installation tools offer a quick and safe installation

MS* Series (uncoated)

- Variety of sizes available in both AISI 304 and 316 stainless steel

MSC* Series (coated)

- AISI 316 stainless steel for the most corrosive environments
- UV resistant, low smoke, halogen-free coating material

MSB* Series

- Individual low profile buckles



Heat Trace Wave-Ty™ Cable Ties:

Use in the installation of Mineral Insulated Electric Heat Trace (MIEHT)

HTMLT* Series

Variety of Sizes available in AISI 304 stainless steel



Installation Tools:

RT2HT

Used with extra heavy and super-heavy cross sections



GS4MT-E

Standard light-heavy and heavy cross sections



PAT1M4.0

Automatic Cable Tie Tool Head for PLTM-XMR Cable Ties with Plastic Ergonomic Housing





Cable Cleats and Accessories for Short Circuit Protection:

Extensive line of cable cleats available in a variety of sizes. Ensures cables remain contained in the event of a short circuit fault. Engineered for ease of installation in a range of applications and harsh environments – CCSSTR* Series



Double Loop – MLT*D* Series

- Extra-heavy and super-heavy cross-sections
- Protection up to 70kA peak current



Buckle Strap Cleat – MS*75* Series

- AISI 316 stainless steel
- Protection up to 156kA peak current



Metal Unclip Brackets – UC* Series

- Allows ties and straps to be installed on any style or design cable tray



Cushion Sleeve – PCSLSH, PCSSH* or PCSS* Series

- The use of cushion sleeve required in most applications

*Signifies different lengths and package size options.

Entering * in the part number on www.panduit.com will give you different size options.

Installation Tools:

BT2HT

Used with 0.38" (9.5mm), 0.50" (12.7mm), and 0.63" (15.9mm) widths strapping



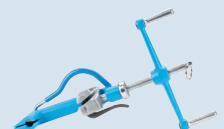
PBTMT and PBTMT/E

Used with heavy, extra-heavy and super heavy cross sections



BT75SDT

Used with MS75 Strapping Only



Cable Ties

Built for Durability:

- A wide range of sizes, styles and materials for fastening, bundling, clamping and identifying in a variety of applications
- Panduit cable ties are designed and manufactured to meet or exceed industry standards to deliver maximum reliability
- Panduit cable ties are engineered from specially selected materials for optimum reliability in the harshest environments including exposure to: acids, bases, chemicals, radiation, and all-weather conditions with operating temperatures up to 500°F (260°C)

Suitability for Securement and Support:

- Select ties meet the 2017 NEC Code for support and secureness of various cable types identified in the Code
- Select Standard cross-section ties (PLT, BT) and Light-Heavy ties (BT)
- Ties meeting this requirement are designated as UL62275 Type 2S, 21S

High-temperature PEEK:

Provide excellent performance at continuous operating temperatures of up to 500°F (260°C), best in class strength, in addition to chemical and radiation resistance



PLT**-*71 Series

MM

TEFZEL:

Excellent flammability rating of UL 94V-0. Distinct aqua blue color. Ideal for applications requiring resistance to gamma radiation and chemical attack



PLT**-*76 Series

Tefzel is a registered trademark of The Chemours Company

OG

MM

Polypropylene:

Provide superior chemical resistance to acids, bases, and salts making them ideal for chemical plants



PLT**-*109 Series: Green, Indoor use

PLT**-*100 Series: Black, Weather Resistant

PP

StrongHold™ Contractor Grade Products

For contractors looking for an economical solution to satisfy general purpose applications, the Panduit® StrongHold™ line will meet this need with an assortment of indoor and outdoor cable ties. Also available are StrongHold™ terminals.



Visit www.panduit.com/stronghold for part numbers

Weather Resistant Acetal:

Provides excellent ultra-violet resistance, strength and durability for long service life



DT**-*0 Series

Installation Tools:

GTS-E

Installs subminiature, miniature, intermediate and standard cross section cable ties



GTH-E

Installs standard, heavy-standard, light-heavy, and heavy cross section cable ties





Weather Resistant Nylon 12:

A material with 12-15 years of weathering life expectancy and resistance to zinc chlorides and dilute acids. Ideal for wire management on galvanized surfaces / frames. Nylon 12 ties are marked with a "+" sign at the neck to distinguish these ties from black weather resistant nylon 6.6 ties.



PLT**-*120 Series

HALAR:

Identifiable maroon colored parts UL listed for use in plenum or air handling spaces per NEC, Section 300-22 (C) and (D); UL62275 AH2 rating. Suitable in applications where flame resistance and smoke generation is a concern.



PLT**-*702Y Series

HALAR is a registered trademark of Solvay Solexis

Flame Retardant Nylon 6.6:

Ties are UL94V-0 rated for applications requiring resistance to flame propagation

PLT**-*69 Series



Metal Barb Tie

Stainless steel lock barb provides consistent performance, reliability, and infinite adjustability through entire bundle range applications



BT**-* Series: Natural, Indoor use
BT**-*0 Series: Black, Weather Resistant
BT**-*30 Series: Black, Heat Stabilized up to 239 F (115 C)

OG MM

Releasable Tie:

Release tab permits easy release and re-use where changes are anticipated

PRT** Series



Metal Detectable:

Unique metal impregnated material allows identification by metal detectors to meet food and beverage industry FDA requirements by helping to reduce product contamination

PLT**-*86 Series
Also available in polypropylene:
PLT**-*186 Series



FB PP

*Signifies different lengths and package size options. Entering * in the part number on www.panduit.com will give you different size options.

Abrasion Protection and Cable Accessories

Protect Your Connections:

Insulate, harness and identify electrical/electronic components and cable with Panduit abrasion protection and cable accessories.

- A wide variety of sizes, materials and designs are available to meet a broad range of indoor and outdoor applications
- Panduit abrasion protection products are designed and manufactured to meet applicable quality standards including UL and CSA
- Comprehensive offering of wire management securing devices speed installation and improve reliability



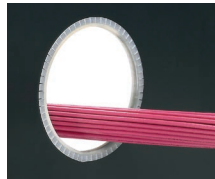
Slotted Grommet Edging:

Slotted nylon performs up to 149°F (65°C) operation temperature and slotted polyethylene performs up to 122°F (50°C)

Nylon: GEE**N-* Series

Polyethylene: GEE**F-* Series

Adhesive Lined Polyethylene: GE**F-A-* Series



Spiral Wrap:

Provides weather resistant abrasion protection to hoses/cables while harnessing multiple hoses/cables into a single manageable bundle

Polyethylene: T**F-*0 Series

Nylon 6.6: T**N-*0 Series

Polypropylene: T**P-*0 Series



Thin Wall TFE Heat Shrink Tubing:

Dry shrink applications up to 482°F (250°C) operating temperatures

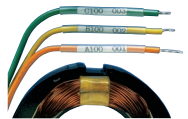
HSTTT* Series



Thin Wall KYNAR Heat Shrink Tubing:

Dry shrink applications up to 347°F (175°C)

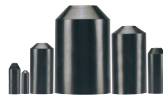
HSTTK* Series



Heat Shrink End Caps:

Adhesive lined inner wall seals and provides excellent protection against moisture

HSEC** Series



Thick Wall Heat Shrink:

UL listed for direct burial and recognized for sunlight resistance and VW-1 flammability with an operating temp of 230°F (110°C)

HST* Series Black

OG MM



Pan-Wrap™ Split Harness Wrap:

Patented slot pattern provides improved flexibility and cable abrasion protection with reduced installation time

PW*F*-* Series



Pan-Wrap™ Braided Sleeving:

Highly flexible, does not trap heat or humidity and the slit allows easy install and access for further upgrades or repairs

SE*PS-*R0 Series





Corrugated Loom Tubing:

Provides protection for cables. Slit for easier install onto a bundle of wires or a pre-assembled harness assembly

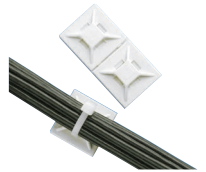
CLT**F Series



Adhesive Cable Tie Mounts:

Provide maximum adhesion even in high-temperature and outdoor environments

ABM* Series



J-Pro™ Cable Support System:

Provide standards-compliant method for routing communication cables throughout the plant infrastructure

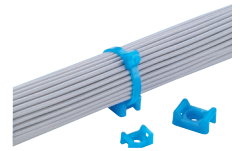
JP** Series



TEFZEL Cable Tie Mounts:

Ideal for applications requiring resistance to gamma radiation and chemical attack

TM**-*76 Series



OG

Screw Applied Cable Tie Mounts:

Available in a broad selection of materials, sizes, and styles

TM*S*-* Series



Metal Detectable Cable Tie Mounts:

Unique metal impregnated material allows identification by metal detectors or x-ray inspection to meet food, beverage, and pharmaceutical safety standards by helping to reduce product contamination

TM**-*86 Series



FB PP

PEEK Cable Tie Mounts:

Operating temperature range up to 500°F (260°C); maintains good tensile strength in high temperature environments

TM**-*71 Series



OG MM

*Signifies different lengths and package size options. Entering * in the part number on www.panduit.com will give you different size options.

Identification and Safety

Safety is a Top Priority

In today's environment, workplace safety is a key concern for all production operations. Managing these concerns and the associated energy sources can be challenging. Panduit brings to market a broad portfolio of solutions that help to achieve workplace safety on industrial construction and MRO sites

- Expertise in Workplace Safety Compliance: Meeting requirements of stringent regulatory bodies (OSHA, ANSI, and NFPA)
- Complete Safety Solution: To control and identify energy in a workplace with lockout/tagout devices, facility signage, and labeling systems
- Training and Tools: Available to help you understand and comply with workplace safety regulations

Arc Flash Labels:

Pre-printed and blank label voltage adhesive markers

PVS0507W* Series



Voltage and Pipe Markers:

Identify voltage, pipe content, and flow direction for safety and compliance

Voltage Adhesive Markers:
PCV* Series

Pipe Markers:
GPMU* Series



Contact your Panduit Sales Rep for further details.

Pre-Printed Marker Books:

Pre-assembled convenient, pocket-sized books

PCMB* Series



Circuit Breaker Lockout Device:

Quick, effective lockout of energy sources controlled by circuit breakers

PSL-PCB or PSL-PCBNT



Metal Embossing Hand Tool:

Lightweight, compact, portable embossing tool

MEHT187



Safety Tags:

Pre-printed Plastic Tags

PVT* Series



Nylon Marker Plates:

Clearly identify cable bundles

MP175-C0



Safety Signs:

High quality signs for use indoors and outdoors to inform of hazards

Vinyl: PVS* Series

Polyester: PPS* Series

Polypropylene Rigid: PRS* Series



Thermal Transfer Labels and Ribbons:

Available in both cassettes for hand-held printers and in rolls for desktop printers

Self-laminating: S*X*V* Series

Heat shrink: H**X**H* Series



PES400:

Delivers maximum usability for medium to high volume applications that are exposed to dirt and paint

PES400





Electrician Lockout Kit:

Contains a variety of lockout/tagout devices commonly used by an individual electrician

PSL-PK-EA
PSL-PK-EAP



Multiple Lockout Device:

Only one device needed to perform a variety of lockout functions

PSL-MLD



Lockout Stations:

Conveniently store padlocks, tags, and lockout devices in one common area

PSL-**SWCA



Lockout Padlocks:

Each lock keyed differently and some styles are supplied with 2 keys

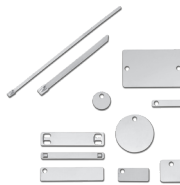
PSL-*



Permanent Identification:

Ideal in harsh and industrial environments, delivers long-term durability and legibility for optimum identification of pipes, conduit, cables and equipment. Use with MLT Series ties for fast installation at lowest installed cost.

MMP* Series
MT* Series



OSHA Compliance Training Program:

Complete lockout/tagout program to help your organization enhance safety in the workplace

Contact your Panduit Sales Rep for further details.



VeriSafe - Absence of Voltage Tester (AVT):

Automate and simplifies the process of absence of voltage verification testing. Retrofit kit available as well.

VS-AVT-* Series



*Signifies different lengths and package size options.

Entering * in the part number on www.panduit.com will give you different size options.

Thermal Transfer Desktop Printer:

Compact, lightweight, and rugged design for use at the job site

TDP43ME
Easy-Mark™ Plus Labeling Software:
EMPLUS-CD and EMPLUS-2GO



Hand-Held Thermal Transfer Printer:

QWERTY keypad designed for easier typing

LS8EQ
Kit version: LS8EQ-KIT



Terminals and Ferrules

Meeting Application Challenges at the Lowest Installed Costs:

- Panduit terminals, disconnects and ferrules are designed and manufactured for superior electrical performance. A complete line of high quality insulated and non-insulated terminals, disconnects, splices, wire joints and ferrules offered in loose piece, reel fed, and various other configurations with worldwide availability
- Applicable sizes are UL Listed and CSA Certified, RoHS compliant, ABS Approved, Class 1E Nuclear Rated, DFARS252.225-7014 Compliant and meet Military Specifications MS25036 and MS20659



RoHS

Ring Terminals:

Ring tongue design assures a secure connection in high vibration applications

Nylon: PN*-R* Series

Heavy Duty: PN12-**HDR-* Series



Vinyl: PV*-R* Series

Heavy Duty: PV12-*HDR-* Series

Heat Shrink: PH**-*R* Series

Kynar Insulated: PK*-R* Series

Non-Insulated: P**-*R* Series

Heavy Duty: P12-*HDR-L Series

High Temp: P**-*RHT*-* Series

Fork Terminals:

Fork design provides for fast and easy installation, without the need to remove fastener

Nylon: PN*-F* Series

Vinyl: PV*-F* Series

Non-Insulated: P*-F* Series



Disconnects:

Designed and precision made to function as a reliable method of making quick, repeatable interconnections

Nylon: DN* Series

Vinyl: DV* Series

Heat Shrink: DNH* Series

Non-Insulated: D** Series



Pin Terminals:

Solid pin designed to prevent damage to the wire from over tightening, resulting in a reliable electrical connection

Vinyl: PV*-P* Series

Non-Insulated: P*-P* Series



Installation Tools:

CT-1550

Crimps most Panduit *22-10 AWG nylon and vinyl insulated terminals, splices and disconnects



CT-2300/ST

This termination tool has a 65% faster crimping cycle vs. a manual crimp tool. This compact, light-weight design reduces hand force from 53 pounds to 6 pounds – maximizing efficiency.





Ferrules:

Designed with a seamless barrel to contain loose wire strands for superior termination[^]

Non-Insulated 24 AWG-500kcmil:
F** Series

Polypropylene Covered Insulated
26 AWG-300 kcmil:
FSD* Series

Twin Polypropylene Covered
22 AWG-6 AWG:
FTD* Series



Splices:

Designed and manufactured for fast assemble, and long reliable performance

Nylon:

Butt Splice: BSN* Series
Parallel Splice: PSN* Series
Wire Joint: JN* Series



Vinyl:

Butt Splice: BSV* Series

Heat Shrink:

Butt Splice: BSH* Series

Non-Insulated:

Butt Splice: BS* Series
Parallel Splice: PS* Series
Wire Joint: J*** Series

Industrial Maintenance Kits:

Steel kits have individual compartments for storage of terminals, disconnects and splices

Nylon: K1-PNKIT

Vinyl: K2-PVKITY

Ferrule 100 Piece Kit: KP-FSD3

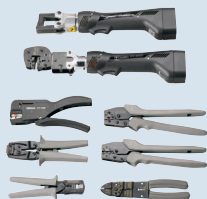
Terminal Kit: KP-1075Y



Installation Tools:

Contour Crimp™ Controlled Cycle Tools CT-* Series

Ergonomic hand tool design assures operator comfort, safety, and performance



CT-3001/ST

Slim crimping head which makes it ideal when space is critical. The automatic position control makes it easy for multiple crimp needs. Use with dies: CD-920-F*



[^]UL46F is for applicable sizes.

Industrial Network Infrastructures

Future Proof Your Network:

- As network components are deployed further into the industrial space, the need for diagnostic test points and future expansion is essential
- Panduit Market Automation Infrastructure solutions adhere to network architectures such as CPwE, providing a reliable end-to-end network physical layer infrastructure
- Standards based solutions are available in many performance levels and configurations offering flexibility and fast installation for a variety of demanding industrial applications

Harsh Environment Copper Solutions:

The Panduit® TX6A™ Shielded Copper Cabling Solutions for Harsh Environment Applications provide a superior infrastructure with a Channel Headroom Guarantee exceeding the TIA/ISO Standards.

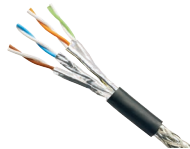
TX6000™ Category 6 Shielded Solution

Horizontal Cable: PSM6004BU-LED
Jack: CJS6088TG



TX6A™ Category 6A Shielded Solution

Horizontal Cable: PSM7004BU-KEM
Jack: CJS6X88TGY



TX6A™ Category 6A Shielded MUD Resistant Solution

Non-Armored: PSMD7004WG-LED
Armored: PSMDA7004WG-LED
Jack: CJS6X88TG

OG

SH

Fiber Connectivity Solutions:

A complete offering of fiber optic cabling and connectivity for harsh environments

Horizontal Cable (OM3 and OM4)

Outside Plant (OSP) Armored: FOWN* Series

Indoor Distribution Cable: FODP* Series

Armored: FOPP* Series

Dielectric Conduit Fiber (DCF): FOAD* Series

Polymer Coated Fiber (PCF)

Interconnect cable: FIID* Series

Indoor/outdoor breakout cable: FI2D* Series



Connector

LC (OM3 and OM4): FLCDCXAQY

Patch Cords

LC to LC (OM3): FX2ERLNLSN* Series

LC to LC (OM4): FZ2ELLNLSN* Series



Industrial Copper Solutions:

Panduit has a comprehensive line of copper physical layer solutions for the industrial Ethernet.

Category 6 Copper Cables

Shielded: IFC6C04BBL-CEG
Unshielded: IUC6C04ABL-CEG



Category 6 RJ45 Plugs

(UTP and STP copper cable compatible):

Conductor Diameter 0.85-1.0mm: ISPS688FAS

Replacement Wire Manager: ISPS688FAS-WM

Conductor Diameter 1.0-1.6mm: ISPS688FA

Replacement Wire Manager: ISPS688FA-WM



Category 6 DIN-Rail Patching Devices

(UTP and STP copper cable compatible):

DIN-Rail Adapter: CADIN1IG

DIN-Rail Panel: CDPP8RG



Category 6 Connectors

Mini-Com® Module Shielded: CJS688* Series

Mini-Com® Module Unshielded: CJ688* Series

Mini-Com® with bulkhead Shielded: IAEBH6S

Mini-Com® with bulkhead Unshielded: IAEBH6



Category 6 Patch Cords

Shielded: ISTPSP* Series

Unshielded: IUTPSP* Series



Category 6A M12 X-Code Connectors

Field Terminable Connector: ISPS6A88MFA

Panel Mount Adapter: ICAM12DXRJS



Category 5e M12 D-Code Connectors

Field Terminable Connector: ISPS5E44MFA

Panel Mount Adapter: ICAM12DRJS



IndustrialNet™ Overmolded Cordsets

Category 5e, UTP Cable: ICD* Series

Category 6A, STP Cable: ICX* Series





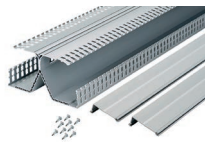
Control Panel Solutions:

Space Optimization

PanelMax™ DIN Rail Wiring Duct:

Up to 30% space savings vs. conventional duct/rail layouts

DRD*LG* Series



PanelMax™ Corner Duct:

Up to 20% space savings in layouts with side and back panels

CWD*LG* Series



Noise Mitigation

PanelMax™ Shielded Wiring Duct and Noise Shield:

Deliver approximately 20dB of noise reduction across common industrial noise frequencies at 30mm wire separation with an approximate 1-meter coupling length

Shielded Wiring Duct: G*LG*EMI Series

Noise Shield: SD*EMI Series



Network Security Copper and Fiber Lock-In/Block-out:

The innovative designs of the block-out and lock-in devices ensure the safety and security of the network infrastructure.

Jack module block-out device: PSL-DCJB

RJ45 Plug lock-in device: PSL-DCPL

LC duplex adapter block-out device: PSL-LCAB



Universal Network Zone System:

Designed for deploying a reliable and secure Ethernet network on the plant floor. Includes cable management, copper and fiber connectivity, grounding, high voltage barrier, redundant power supplies, UPS, PoE power speeds installation time by up to 75%.



24" Height: Z22U* Series

36" Height: Z23U* Series

Pre-Configured Industrial Distribution Frame:

Engineered to deploy and protect rack mount Ethernet switches in industrial applications. 316 stainless steel and mild steel options are available.

26U: ZDF48*

12U: ZDF242430*



Pre-Configured Micro Data Center:

Provides the link between the Corporate and Industrial Networks in order to maintain network uptime and security, segregate networks and speed changes and troubleshooting.



42RU, includes shock pallet and ramp: MDC79D

42RU: MDC79

24RU, includes shock pallet and ramp: MDC48D

Industrial Network Uninterruptible Power Supply (UPS):

No-battery, maintenanc-free UPS delivers uninterrupted power and decreased risk of downtime for critical industrial applications including managed network switches, micro PLCs, and HMIs.

UPS: UPS00100DC

Load Sense Module: UPS003LSM



NEMA Wireless Enclosure:

Wireless enclosures protect wireless networks from tampering and theft by enclosing WAPs; specifically designed for use in outdoor and industrial environments.



PoE applications: PZNWE12

AC power applications: PZNWE14

*Signifies different lengths, materials or package size options. Entering * in the part number on www.panduit.com will give you different options.

^EtherNet/IP is a trademark of ODVA.

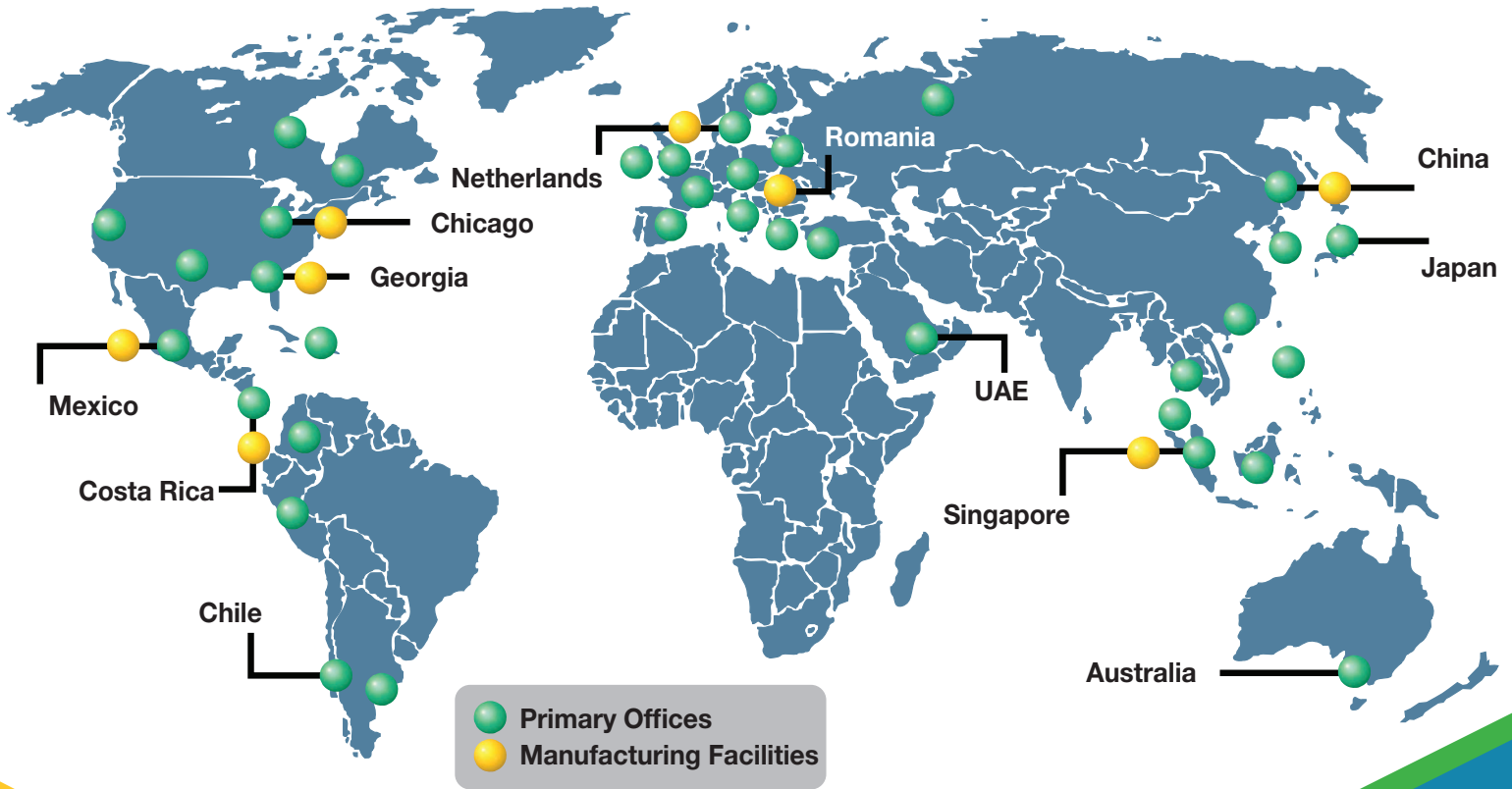
Global Capabilities

Global Expertise and Support

Global distribution, manufacturing, sales and technical support teams make Panduit solutions readily accessible, allowing the right products to be delivered when and where they are needed.

Worldwide Certifications

Panduit solutions hold a variety of the most common heavy industry certifications and approvals worldwide.



Panduit Corp.
World Headquarters
Tinley Park, IL 60487

cs@panduit.com
US and Canada: 800.777.3300
Europe, Middle East, and Africa:
44.20.8601.7200
Latin America: 52.33.3777.6000
Asia Pacific: 65.6305.7575



www.panduit.com